



*Montanari*  
DRIVE TECHNOLOGY

*Montanari Group*  
Traction Machines in China

# 索引 - Index

点击页码或产品名称以快速访问相关部分。  
Click on the page to quickly access section

无齿轮  
Gearless **10**

扶梯有齿曳引机  
Escalator Gearboxes **70**

零部件  
Components **84**

曳引机艺术的缔造者  
**THE ART OF**  
**MANUFACTURING**  
**TRACTION MACHINES**



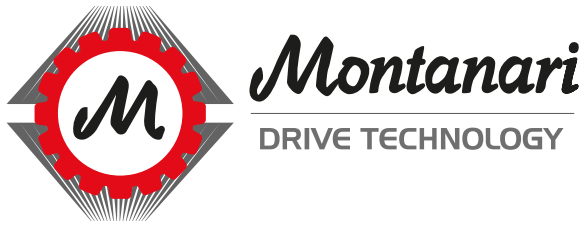


*Montanari Group*

GEARLESS&GEARBOX  
TRACTION MACHINES

**GUARANTEE TO CUSTOMERS  
ALL OVER THE WORLD THE  
DISTINCTIVE MONTANARI  
QUALITY.**

致力于为全球客户  
提供高品质的  
蒙塔纳锐产品。



# 蒙塔纳锐集团-中国基地

## **MONTANARI GROUP - CHINA SITE**

自2016年起，蒙塔纳锐集团通过蒙塔纳锐驱动技术（浙江）有限公司在中国开展业务，其生产基地位于浙江省平湖市

在意大利总部的技术支持和多年专业经验的引领下，我们的中国公司专注于制造顶级无齿轮曳引机及电梯系统零部件，同时经销意大利制造的电梯和自动扶梯用有齿轮曳引机。

自2017年起，蒙塔纳锐驱动技术（浙江）有限公司作为一家通过ISO9001认证的企业，致力于为全球客户提供最高品质的产品已通过严格的测试以及持续的技术支持。

我们不仅是曳引机制造商，更是始终伴您左右的技术合作伙伴——从选型、安装到项目竣工。





*Montanari Group*

GEARLESS&GEARBOX  
TRACTION MACHINES

一个品牌，无限可能

**A BRAND. INFINITE SOLUTIONS.**

**Since 2016 Montanari Group operates in China through Montanari Drive Technology (Zhejiang) Co. Ltd**, the manufacturing site located in Pinghu - Zhejiang.

Lead by italian HQ technology and long-standing expertise, our chinese Company is specialized in manufacturing top-class gearless and components for elevator systems, while distributing also Made in Italy geared machines for lifts and escalators.

Since 2017 a ISO9001 Certified Company, Montanari Drive Technology ensures highest quality, rigorous testing and constant technical assistance to its international clients.

**Not just a Provider, yet a technical Partner** always at your side - from selection to installation and project completion.





*Montanari Group*

GEARLESS&GEARBOX  
TRACTION MACHINES



集团总部研发和生产基地  
GROUP HQ - R&D & manufacturing, Modena, Italy

**MONTANARI GIULIO & C. SRL**

蒙塔纳锐集团成立于1970年，自成立以来一直将总部设在意大利摩德纳，即世界“引擎之都”的核心地带。

目前，集团在全球拥有4家子公司，年产电梯用曳引机超过85,000台，业务遍及85多个国家。

顶尖技术、自主生产及严格测试，确保对每台有齿轮/无齿轮曳引机、安全部件及电梯配件的全流程控制，从而为电梯和自动扶梯系统提供最高品质的产品。

Montanari Group was founded in **1970**, headquartered since then in Italy (Modena), in the heart of Motor Valley.

Today the Group features 4 Companies around the world, manufacturing over 85,000 traction machines every year and serving over 85 countries.

**Cutting-edge technology, in-house production and rigorous testing** guarantee full process control and maximum quality on each geared/gearless machines, safety devices and components supplied to enhance elevator and escalator systems.



## **MONTANARI DRIVE TECHNOLOGY**

蒙塔纳锐驱动技术浙江生产基地  
Manufacturing plant, Pinghu Zhejiang, China

我们位于平湖的中国基地年生产能力超过12,000台无齿轮曳引机，同时，用于电梯和自动扶梯系统的意大利制造齿轮机会从集团总部及时进口。集团持续投入，以确保不断创新、一流的生产水平以及独特的客户体验，从而使蒙塔纳锐品牌执行最严格的质量和服务标准。自2017年以来，蒙塔纳锐驱动技术（浙江）有限公司一直致力于为当地客户提供及时且专业的支持。

Our Pinghu-based manufacturing Company has a yearly production capacity of over 12.000 gearless units while Made in Italy geared machines for elevator and escalator systems are timely imported from the Group Headquarters.

The Group is continuously investing to ensure constant innovation, top-class production and unique customer experience, meeting the strictest quality and service standards of Montanari Brand.

Since 2017 Montanari Drive Technology is dedicated to provide timely and dedicated support to local customers.



*Montanari Group*

GEARLESS&GEARBOX  
TRACTION MACHINES

## 一个您可以值得信赖的品牌 - A BRAND YOU CAN TRUST

凭借不懈的创新、严格的测试以及深厚的专业积淀，我们能够始终预见垂直运输领域的技术进步，并为各类安装需求提供可靠高效的解决方案，确保为安装人员、技术人员及终端用户带来无缝衔接的体验。

蒙塔纳锐是值得信赖且专业的合作伙伴：

- 从选型到安装，以及售前和售后的一站式技术支持
- 可靠且经过认证的部件，专为耐久性和高性能而设计
- 通过蒙塔纳锐学院为行业技术人员提供专业培训

55多年来，Montanari 始终是牵引解决方案领域的全球领先品牌

Relentless innovation, rigorous testing and long-standing expertise allow us to constantly anticipate the vertical transportation advancements and supports any installation needs with reliable and efficient solutions, ensuring a seamless experience to installers, technicians, end users alike.

Montanari stands as trustworthy and specialized Partner for:

- Technical support from selection to installation, **before and after sales**
- **Reliable and certified components** designed for durability and performance
- Specialized **training** for industry technicians through its Montanari Academy

**Since over 55 years**, Montanari is the global leading Name for traction solutions.





严格测试，确保最佳可靠性

## **RIGOROUS TESTING FOR BEST RELIABILITY**

蒙塔纳锐卓越的品质得益于最高制造标准和严格的检测流程，其遍布全球的各家公司均采用尖端技术（人形机器人、三坐标测量机、激光扫描仪）并配备专业技术团队，确保这些标准和流程得到贯彻执行。

每个部件在整个生产过程中均受到严格控制，每台曳引机（100%）在发货前都会经过最大扭矩和转速容量的测试。

The unique Montanari quality is guaranteed by **highest manufacturing standards and rigorous testing procedures**, conducted in all its companies around the world through **cutting-edge technology** (anthropomorphic robots, CMM, laser scanners) and **qualified technical Team**.

Each component is controlled throughout production and each traction machine is tested at maximum torque and speed capacity before being shipped.

卓越并非承诺，而是事实！

**EXCELLENCE IS NOT A PROMISE, IT'S A EVIDENCE!**

# 无齿轮 **GEARLESS**



曳引机 中国 浙江省 平湖市 - Gearless machine on display at Pinghu HQ, Zhejiang , China



我们坚信，在研发方面的  
创新和投资是成长和创造  
价值的推动力。

**WE FIRMLY BELIEVE  
THAT INNOVATION,  
TECHNOLOGY AND  
EXPERTISE ARE  
THE ENGINE FOR  
GROWTH AND  
VALUE CREATION.**

## 技术特性

蒙塔纳锐无齿轮曳引机的设计旨在根据有效的指令和标准在电梯和升降平台中使用，并具有以下技术特性：

- 淬火合金钢机轴和高强度球墨铸铁制成的曳引轮；
- 具有上行超速保护装置和轿厢意外移动装置且经过认证的制动器；
- 配有松闸手柄的制动器；
- 100%已测试最大扭矩；

在完全安全的情况下，阻转扭矩总是高于紧急操作的额定扭矩。

## 操作数据

蒙塔纳锐无齿轮曳引机的设计适用于标准电梯：

- 从首站到最后一站的行程时间最长为50秒；
- 断续周期工作制为40%；
- 24小时/天180次启动/小时；
- 如需更长行程和/或更高工作制，请咨询蒙塔纳锐销售部门。
- 额定功率条件下的使用寿命为20000小时。

## 选择表

下表是基于以下工况制作的：

- 平衡系数为45%；
- 钢丝绳重量为30kg；
- 电梯井道效率为85%；
- 显示钢丝绳最大数量及其直径；
- 可提供表格中未包含的其他配置以及针对不同电梯工况专门设计的解决方案；

操作数据仅作为示例。

如需准确的操作数据，请咨询蒙塔纳锐销售部门。

## TECHNICAL FEATURES

Montanari gearless machines are designed to be used in lifts and lifting platforms in accordance with the directives and standards in force and with the following technical features:

- hardened alloy steel shaft & high resistance alloy cast iron pulley;
- certified brake both for excess speed in lifting and against uncontrolled movements of the cab;
- brake with levers for manual release;
- 100% tested for max torque;
- **short circuit torque always higher than the rated one for emergency manoeuvres in full safety.**

## OPERATING DATA

Montanari gearless machines are designed to be used in standard lifts:

- travel time from the first to the last stop max. 50 second;
- 40% service intermittent operation;
- 180 starts/h for 24 h/day;
- for longer travels and/or intermittent operation, refer to Montanari sales department.
- the life at rated power corresponds to 20,000 hours.

## SELECTION TABLE

The following table was prepared according to the following points:

- system balanced at 45%;
- rope weight 30 kg;
- compartment output 85%;
- the max number of ropes and their diameter is indicated;
- possibility of further layout conditions not listed in the table, along with solutions designed for each type of system.

Operating data is only by way of example. For detailed operating data ask to Montanari sales department.

# 无齿轮 GEARLESS

2:1		载重-LOAD																			
		kg																			
		320	400	450	630	800	1000	1200	1350	1500	1600	2000	2500	3000							
绳引轮-PULLEY DIAMETER mm	85	MDG45																			
		MDG45-FG																			
		MDG63																			
	100	MDG45																			
		MDG45-FG																			
		MDG63																			
	120	MDQ16H																			
		MDQ16H																			
	160	MDQ400H																			
		MDX400H																			
	200	MDQ20HS																			
		MDX26HS																			
	240	MDX26S																			
		MDX26M																			
		MDX26ML																			
		MDX26L																			
	320	MDX26S																			
		MDX26M																			
		MDX26ML																			
		MDX26L																			
MDX36S																					
MDX36M																					
MDX36ML																					
400	MDX36L																				
	MDX36S																				
	MDX36M																				
	MDX36ML																				
440	MADE IN ITALY - MG34XL																				
	MADE IN ITALY - MG34XL																				
480	MADE IN ITALY - MG34XL																				
	MADE IN ITALY - MG34XL																				
520	MADE IN ITALY - MG34XL																				
	MADE IN ITALY - MG34XL																				

#14



MDQ16H

#16



MDQ400H

#18



MDQ20HS

#20



MDX400H

#22



MDX26HS

#24



MDX26S

#26



MDX26M

#28



MDX26ML

#30



MDX26L

#32



MDX36S

#34



MDX36M

#36



MDX36ML

#38



MDX36L

#40



MGV34XL

#46



MDG45

#48



MDG45-FG

#50



MDG63

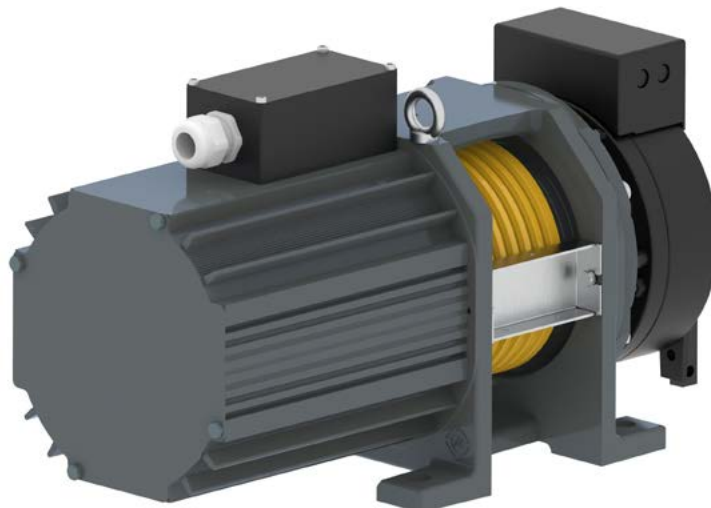
#52



MDG100

#54


**DISCOVER MF**  
**FLAT GEARLESS SERIES**



主轴静载  
**static load**  
2000 kg


最大载重  
**load**  
450 kg

最大速度  
**speed**  
up to 0,4 m/s

曳引轮  
**sheave**  
120 - 160 mm

自重  
**weight**  
80 kg

额定扭矩 <b>Nominal Torque</b>	极数 <b>Poles</b>	编码器 <b>Encoder</b>
<b>Nm</b>		
<b>125 S5-25%ED 180s/h</b>	16	ERN1387 ECN1313 EI53C9.25 TS5213N2531
<b>制动器 Brake</b>		
EMFR DC110V/1.4A[2X125Nm]		

		绳槽 Ropes		
曳引轮直径 ØD	宽度 F	绳径 Ø	绳槽数 n°	槽距 Pitch
mm		mm		mm
120	82	6,5	6	10
160		6		



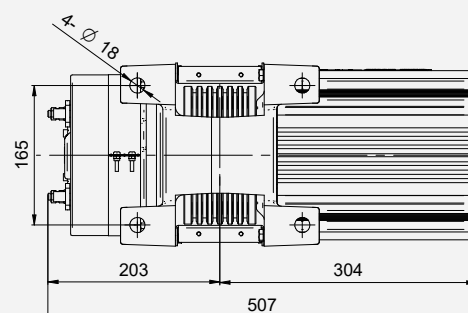
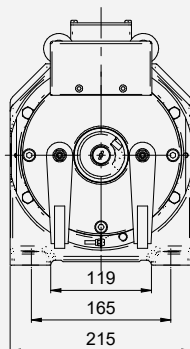
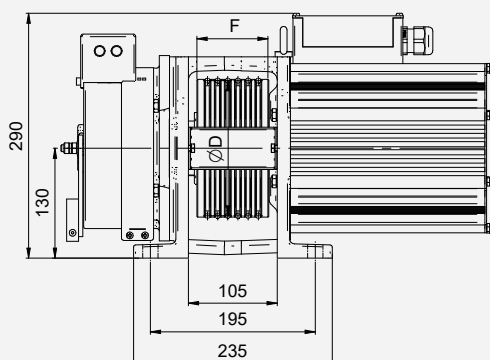
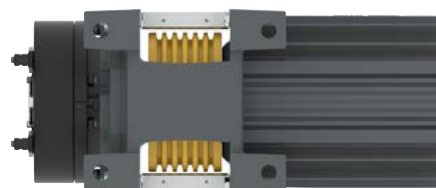
2:1	额定载重 Load	额定速度 Speed	∅	绳槽 Ropes	槽距 Pitch	额定扭矩 Torque	额定功率 Power	额定转速 RPM	额定频率 Freq.	额定电流 Current 220V	额定电流 Current 380V
	kg	m/s	mm	max	mm	Nm	kW	RPM	Hz	A	A
320	320	0,3	160	6x∅6	10	70	0,52	72	9,5	4,7	3,3
		0,4	160	6x∅6	10	81	0,81	95	12,7	5,5	3,9
400	400	0,3	160	6x∅6	10	103	0,77	72	9,5	7,0	4,9
		0,4	160	6x∅6	10	103	1,02	95	12,6	7,0	4,9
450	450	0,3	120	6x∅6.5	10	86	0,86	95	12,7	5,8	4,1
		0,4	120	6x∅6.5	10	86	1,14	127	16,9	6,9	5,8

1 - 数据如有更改，恕不另行通知

1 - Data are subject to change without prior notice

2 - 的曳引轮只适用于布鲁格CTP6.5MM钢丝绳

2 - Traction Sheave 120 mm available only for BRUGG CTP 6.5mm





主轴静载  
**static load**  
2000 kg

最大载重  
**load**  
450 kg

最大速度  
**speed**  
up to 1 m/s

曳引轮  
**sheave**  
200 mm

自重  
**weight**  
85 kg

额定扭矩 <b>Nominal Torque</b>	极数 <b>Poles</b>	编码器 <b>Encoder</b>
<b>Nm</b>		
<b>150 S5-25%ED 180s/h</b>	16	ERN1387 ECN1313 EI53C9.25 TS5213N2531
<b>制动器 Brake</b>		
EMFR DC110V/2.0A[2X200Nm]		

		绳槽 Ropes		
曳引轮直径 ØD	宽度 F	绳径 Ø	绳槽数 n°	槽距 Pitch
mm		mm		mm
200	57	8	3-4	12



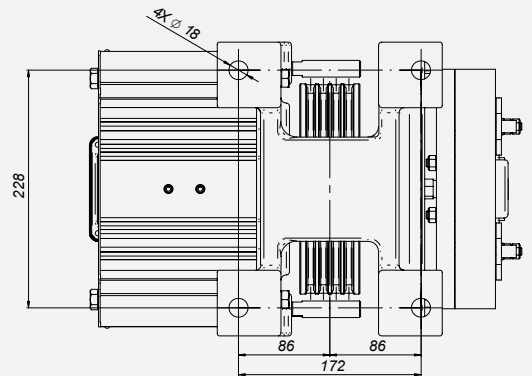
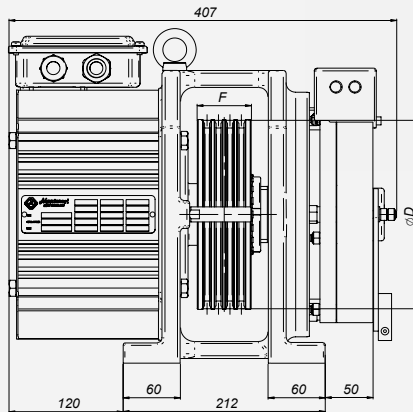
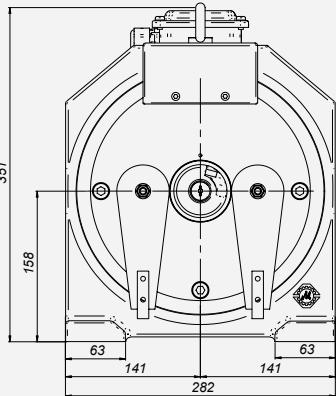
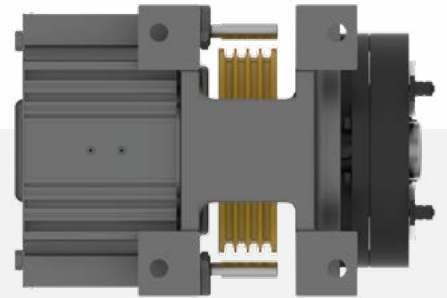
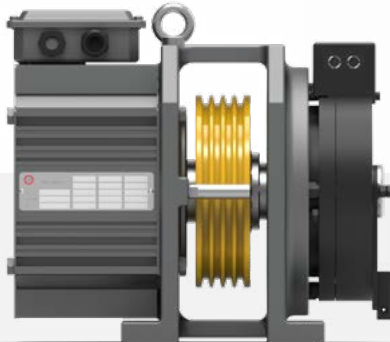
2:1	额定载重	额定速度	∅	绳槽	槽距	额定扭矩	额定功率	额定转速	额定频率	额定电流	额定电流
	Load	Speed	mm	Ropes	Pitch	Torque	Power	RPM	Freq.	Current 220V	Current 380V
	kg	m/s	mm	max	mm	Nm	kW	RPM	Hz	A	A
260		0,3	200	3x∅8	12	71	0,43	57	7,6	4,2	2,6
		0,4	200	3x∅8	12	71	0,57	76	10,2	4,2	2,6
320		0,3	200	3x∅8	12	87	0,52	57	7,6	5,8	3,3
		0,4	200	3x∅8	12	87	0,70	76	10,2	5,8	3,3
		0,5	200	3x∅8	12	87	0,87	95	12,7	5,8	3,3
400		0,4	200	3x∅8	12	109	0,87	76	10,2	6,4	4,0
		0,5	200	3x∅8	12	109	1,09	95	12,7	8,9	4,0
		1,0	200	3x∅8	12	109	2,18	191	25,5	13,3	6,9
450		1,0	200	4x∅8	12	143	2,86	191	25,5	17,4	9,0

1 - 数据如有更改，恕不另行通知

1 - Data are subject to change without prior notice

2 - 我们能够提供带电源线和不带电源线两种配置的机器

2 - We are able to offer machines with and without power cable configurations.





主轴静载  
**static load**  
2000 kg

最大载重  
**load**  
450 kg

最大速度  
**speed**  
up to 1 m/s

曳引轮  
**sheave**  
240 mm

自重  
**weight**  
120 kg

额定扭矩 <b>Nominal Torque</b>	极数 <b>Poles</b>	编码器 <b>Encoder</b>
<b>Nm</b>		
<b>215 S5-25%ED 180s/h</b>	16	ERN1387 ECN1313 EI53C9.25 TS5213N2531
<b>制动器 Brake</b>		
EMFR DC110V/1.9A[2X200Nm]		

		绳槽 Ropes		
曳引轮直径 ØD	宽度 F	绳径 Ø	绳槽数 n°	槽距 Pitch
mm		mm		mm
240	80	8	3-6	12



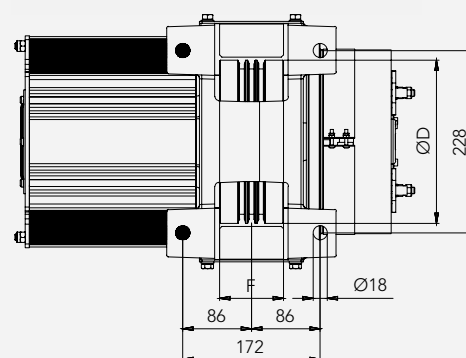
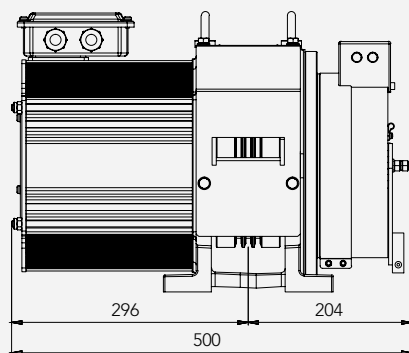
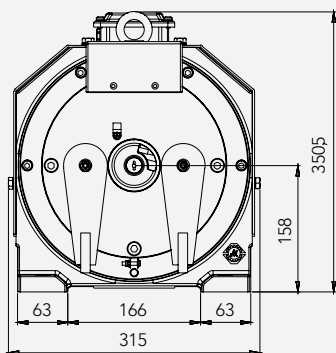
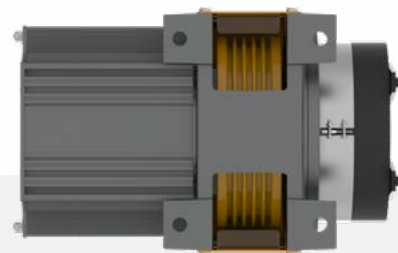
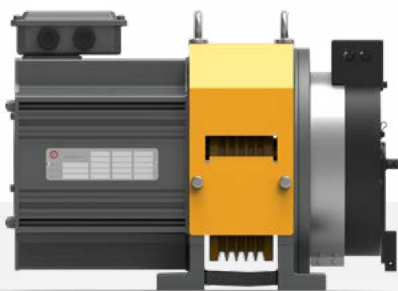
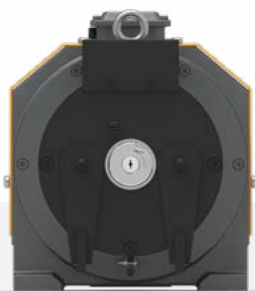
2:1	额定载重 Load	额定速度 Speed	∅	绳槽 Ropes	槽距 Pitch	额定扭矩 Torque	额定功率 Power	额定转速 RPM	额定频率 Freq.	额定电流 Current 220V	额定电流 Current 380V
	kg	m/s	mm	max	mm	Nm	kW	RPM	Hz	A	A
260		0,3	240	3x∅8	12	85	0,43	48	6,4	4,1	2,0
		0,4	240	3x∅8	12	85	0,57	64	8,5	4,1	2,0
320		0,3	240	3x∅8	12	122	0,61	48	6,4	5,8	2,8
		0,4	240	3x∅8	12	122	0,81	64	8,5	5,8	2,8
		0,5	240	3x∅8	12	122	1,02	80	10,6	7,0	3,4
400		0,3	240	3x∅8	12	131	0,65	48	6,4	6,3	3,0
		0,4	240	3x∅8	12	152	1,02	64	8,5	7,3	3,5
		0,5	240	3x∅8	12	152	1,27	80	10,6	7,3	3,5
		1,0	240	3x∅8	12	152	2,54	159	21,2	14,2	6,5
450		0,4	240	4x∅8	12	147	0,98	64	8,5	7,0	3,4
		0,5	240	4x∅8	12	171	1,43	80	10,6	8,2	4,8
		1,0	240	4x∅8	12	171	2,86	159	21,2	16,0	7,3

1 - 数据如有更改，恕不另行通知

1 - Data are subject to change without prior notice.

2 - 我们能够提供带电源线和不带电源线两种配置的机器

2 - We are able to offer machines with both power cable and no power cable configurations.





主轴静载  
**static load**  
1250 kg


最大载重  
**load**  
450 kg

最大速度  
**speed**  
up to 1 m/s

曳引轮  
**sheaves**  
160 - 200 mm

自重  
**weight**  
75 kg

额定扭矩 <b>Nominal Torque</b>	极数 <b>Poles</b>	编码器 <b>Encoder</b>
<b>Nm</b>		
<b>150 S5-25%ED 180s/h</b>	16	ERN1387 ECN1313 EI53C9.25 TS5213N2531
<b>制动器  Brake</b>		
EMFR DC110V/2.0A[2X200Nm]		

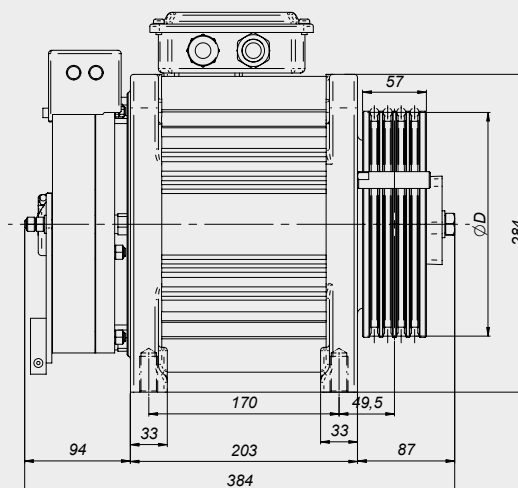
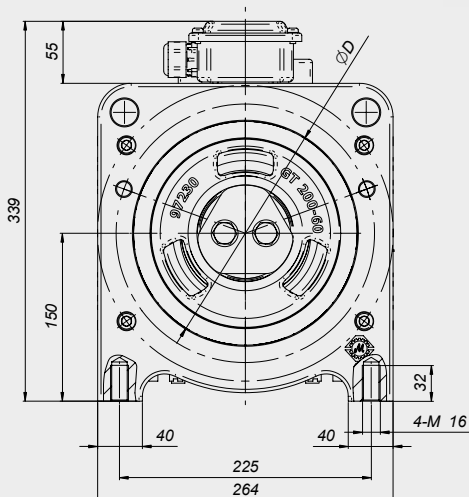
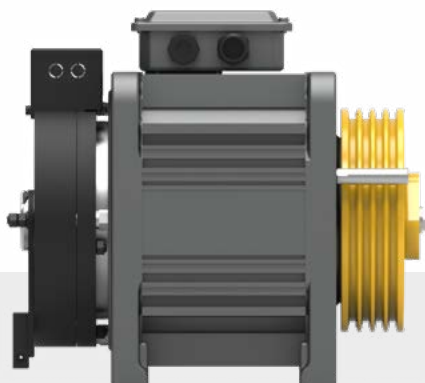
		绳槽 Ropes			
		曳引轮直径 ØD	宽度 F	绳径 Ø	绳槽数 n°
mm			mm		mm
200	57		8	3-4	12
160			6	3-5	10

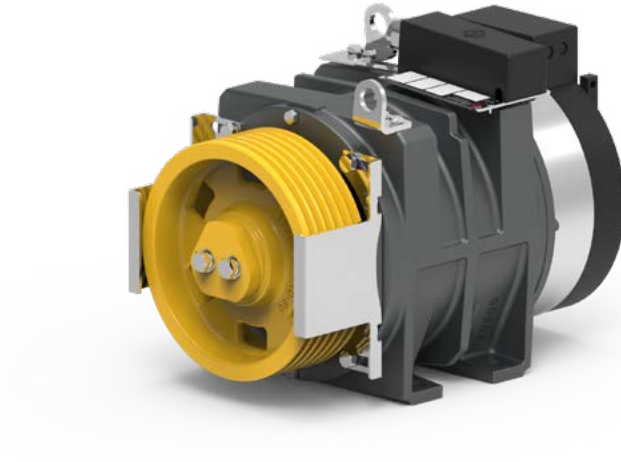
2:1	额定载重 Load	额定速度 Speed	∅	绳槽 Ropes	槽距 Pitch	额定扭矩 Torque	额定功率 Power	额定转速 RPM	额定频率 Freq.	额定电流 Current 220V	额定电流 Current 380V
	kg	m/s	mm	max	mm	Nm	kW	RPM	Hz	A	A
260	260	0,3	200	3x∅8	12	71	0,43	57	7,6	4,2	2,6
		0,4	200	3x∅8	12	71	0,57	76	10,2	4,2	2,6
320	320	0,3	200	3x∅8	12	87	0,52	57	7,6	5,8	3,3
		0,4	200	3x∅8	12	87	0,70	76	10,2	5,8	3,3
		0,5	200	3x∅8	12	87	0,87	95	12,7	5,8	3,3
400	400	0,4	200	3x∅8	12	109	0,87	76	10,2	6,4	4,0
		0,5	200	3x∅8	12	109	1,09	95	12,7	8,9	4,0
		1,0	200	3x∅8	12	109	2,18	191	25,5	13,3	6,9
450	450	1,0	200	4x∅8	12	143	2,86	191	25,5	17,4	9,0

2:1	额定载重 Load	额定速度 Speed	∅	绳槽 Ropes	槽距 Pitch	额定扭矩 Torque	额定功率 Power	额定转速 RPM	额定频率 Freq.	额定电流 Current 220V	额定电流 Current 380V
	kg	m/s	mm	max	mm	Nm	kW	RPM	Hz	A	A
260	260	0,3	160	5x∅6	10	62	0,47	72	9,5	4,0	2,3
		0,4	160	5x∅6	10	66	0,66	95	12,7	4,8	2,4
320	320	0,3	160	5x∅6	10	70	0,52	72	9,5	4,5	2,6
		0,4	160	5x∅6	10	81	0,81	95	12,7	6,0	3,0
		0,5	160	5x∅6	10	81	1,02	119	15,9	6,6	4,8
		0,63	160	5x∅6	10	81	1,28	150	20,1	9,9	5,1
		1,0	160	5x∅6	10	81	2,03	239	31,8	9,9	5,1
400	400	0,4	160	5x∅6	10	102	1,02	95	12,7	7,4	3,8
		0,5	160	5x∅6	10	102	1,27	119	15,9	8,3	6,6
		0,63	160	5x∅6	10	102	1,60	150	20,1	12,4	6,4
		1,0	160	5x∅6	10	102	2,54	239	31,8	12,4	6,4
450	450	0,4	160	5x∅6	10	114	1,14	95	12,7	8,4	4,2
		0,5	160	5x∅6	10	114	1,43	119	15,9	9,3	7,4
		0,63	160	5x∅6	10	114	1,80	150	20,1	13,9	7,4
		1,0	160	5x∅6	10	114	2,86	239	31,8	13,9	7,4

1 - 数据如有更改，恕不另行通知  
1 - Data are subject to change without prior notice

2 - 我们能够提供带电源线和不带电源线两种配置的机器  
2 - We are able to offer machines with both power cable and no power cable configurations.





主轴静载  
**static load**  
1800 kg

最大载重  
**load**  
450 kg

最大速度  
**speed**  
up to 1 m/s

曳引轮  
**sheave**  
240 mm

自重  
**weight**  
120 kg

额定扭矩 <b>Nominal Torque</b>	极数 <b>Poles</b>	编码器 <b>Encoder</b>
<b>Nm</b>		
<b>215 S5-25%ED 180s/h</b>	16	ERN1387 ECN1313 EI53C9.25 TS5213N2531
<b>制动器 Brake</b>		
EMFR DC110V/1.9A[2X400Nm]		

		绳槽 Ropes		
曳引轮直径 ØD	宽度 F	绳径 Ø	绳槽数 n°	槽距 Pitch
mm		mm		mm
240	79	8	3-4	12



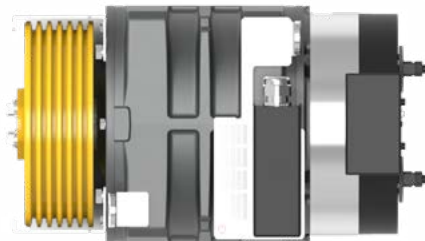
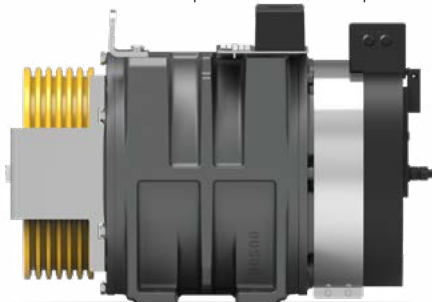
2:1	额定载重 Load	额定速度 Speed	Ø	绳槽 Ropes	槽距 Pitch	额定扭矩 Torque	额定功率 Power	额定转速 RPM	额定频率 Freq.	额定电流 Current 220V	额定电流 Current 380V
	kg	m/s	mm	max	mm	Nm	kW	RPM	Hz	A	A
260		0,3	240	3xØ8	12	85	0,43	48	6,4	4,1	2,0
		0,4	240	3xØ8	12	85	0,57	64	8,5	4,1	2,0
320		0,3	240	3xØ8	12	122	0,61	48	6,4	5,8	2,8
		0,4	240	3xØ8	12	122	0,81	64	8,5	5,8	2,8
		0,5	240	3xØ8	12	122	1,02	80	10,6	7,0	3,4
400		0,3	240	3xØ8	12	131	0,65	48	6,4	6,3	3,0
		0,4	240	3xØ8	12	152	1,02	64	8,5	7,3	3,5
		0,5	240	3xØ8	12	152	1,27	80	10,6	7,3	3,5
		1,0	240	3xØ8	12	152	2,54	159	21,2	14,2	6,5
450		0,4	240	4xØ8	12	147	0,98	64	8,5	7,0	3,4
		0,5	240	4xØ8	12	171	1,43	80	10,6	8,2	4,8
		1,0	240	4xØ8	12	171	2,86	159	21,2	16,0	7,3

1 - 数据如有更改，恕不另行通知

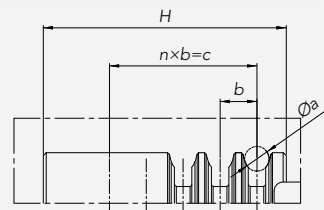
1 - Data are subject to change without prior notice

2 - 我们能够提供带电源线和不带电源线两种配置的机器

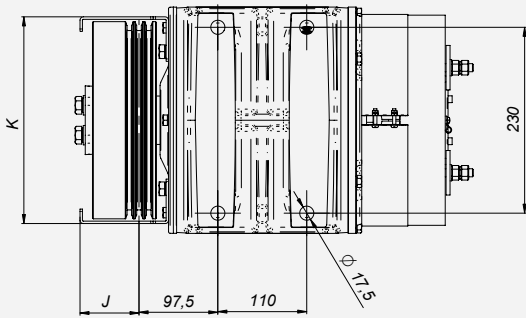
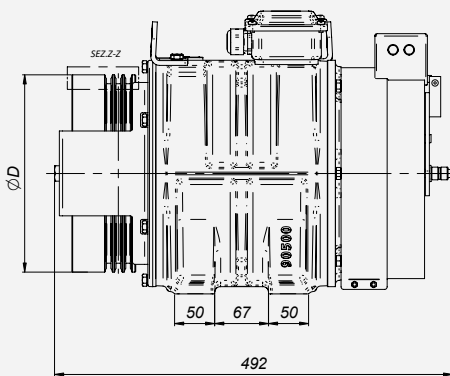
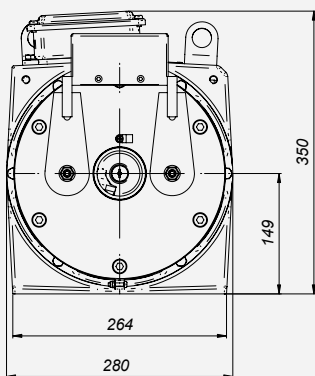
2 - We are able to offer machines with both power cable and no power cable configurations.



ØD	槽数 Grooves	Ø a	b	c	n	H	K	J	G
mm		mm	mm	mm		mm	mm	mm	mm
240	3	8	12	24	2	79	256	79	97,5
	4			36	3		256	73	103,5
	5			48	4		256	67	109,5
	6			60	5		256	61	115,5

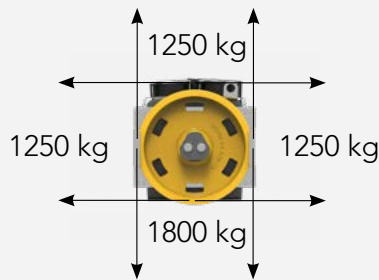


DETAL Z-Z (4:1)






主轴静载  
Static Load



自重  
Weight

145 kg

额定扭矩 Nominal Torque	极数 Poles	编码器 Encoder
Nm		
<b>250</b> <b>S5 - 40% ED</b> <b>180 s/h</b>	16	ERN1387 ECN1313 EI53C9.25 TS5213N2531
<b>制动器</b> <b>Brake</b>		
EMFS DC110V/2X0.9A [2X400Nm]		

		绳槽 Ropes		
曳引轮直径 ØD	宽度 F	绳径 Ø	绳槽数 n°	槽距 Pitch
mm		mm		mm
240	79	6,5	5-6	9,5
320	76	8	4-5	12

1 - 数据如有更改，恕不另行通知

1 - Data are subject to change without prior notice.

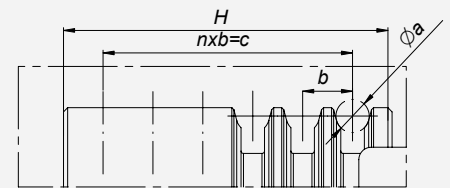
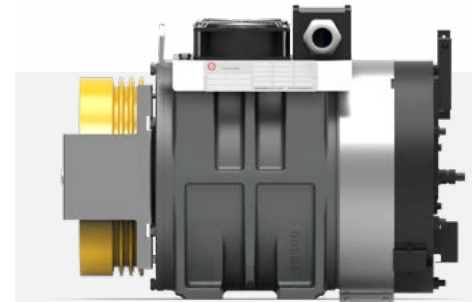
2 - 我们能够提供带电源线和不带电源线两种配置的机器

2 - We are able to offer machines with and without power cable configurations.

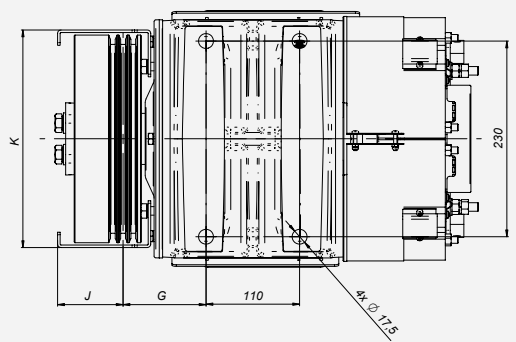
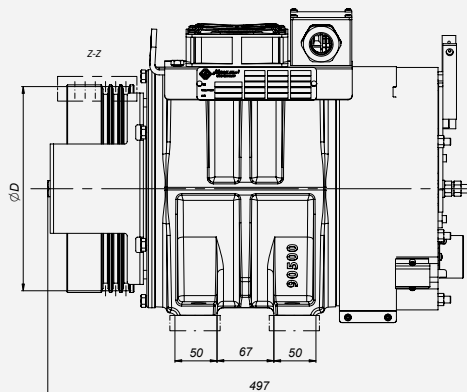
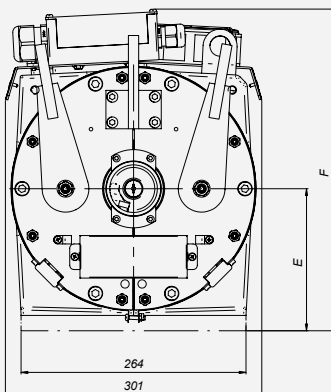


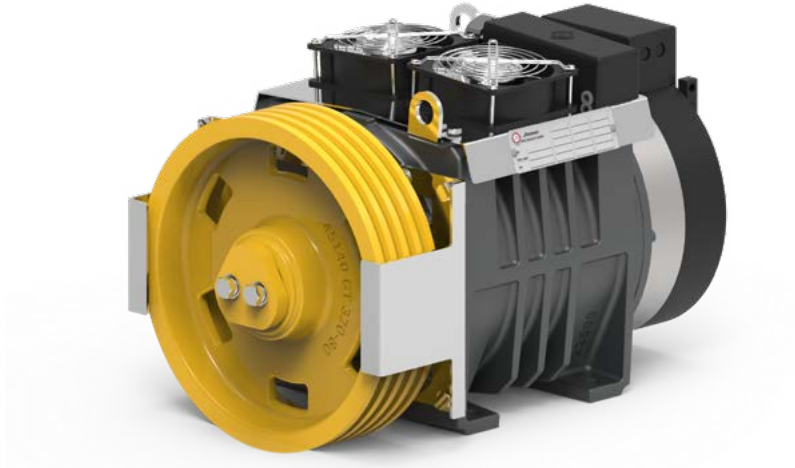
2:1	额定载重 Load		∅	绳槽 Ropes	槽距 Pitch	额定扭矩 Torque	额定功率 Power	额定转速 RPM	额定频率 Freq.	额定电流 Current 220V	额定电流 Current 380V
	kg	m/s	mm	max	mm	Nm	kW	RPM	Hz	A	A
400	1,0	320	5x∅8	12	203	2,54	119	15,9	15,4	7,0	
	450	0,63	320	5x∅8	12	196	1,55	75	10,0	11,3	6,8
		1,0	320	5x∅8	12	196	2,45	119	15,9	14,9	8,4
		1,5	320	5x∅8	12	196	3,68	179	23,9	23,2	11,4
		1,75	320	5x∅8	12	229	5,00	209	27,9	27,0	17,4
		2,00	320	5x∅8	12	229	5,71	239	31,8	27,0	17,4
2,50	320	5x∅8	12	229	7,14	298	39,8	27,0	20,3		
630	0,63	240	6x∅6.5	9,5	206	2,16	100	13,4	18,3	11,9	
	1,0	240	6x∅6.5	9,5	206	3,43	159	21,2	18,3	11,9	
	1,5	240	6x∅6.5	9,5	240	6,00	239	31,8	28,4	18,2	
	1,75	240	6x∅6.5	9,5	240	7,00	279	37,1	28,4	18,2	
	2,00	240	6x∅6.5	9,5	240	8,00	318	42,4	28,4	22,2	

∅D	槽数 Grooves	∅ a	b	c	n	H	K	E	F	J	G
mm		mm	mm	mm		mm	mm	mm	mm	mm	mm
240	3	8	12	24	2	79	256	149	344	79	97,5
	4			36	3		256	149	344	73	103,5
	5			48	4		256	149	344	67	109,5
	6			60	5		256	149	344	61	115,5
320	3			24	2	76	342	167	362	69	115,5
	4			36	3		342	167	362	69	115,5
	5			48	4		342	167	362	69	115,5
	6			60	5		342	167	362	69	115,5

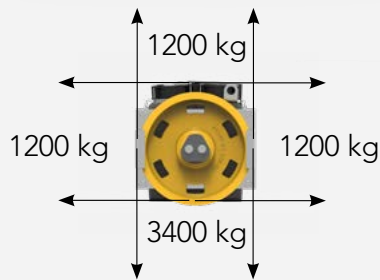


Det. Z-Z





主轴静载  
Static Load



自重  
Weight

175 kg

额定扭矩 <b>Nominal Torque</b>	极数 <b>Poles</b>	编码器 <b>Encoder</b>
<b>Nm</b>		
<b>385 S5 - 40% ED 180 s/h</b>	16	ERN1387 ECN1313 EI53C9.25 TS5213N2531
<b>制动器 Brake</b>		
EMFS DC110V/2X0.9A [2X400Nm]		

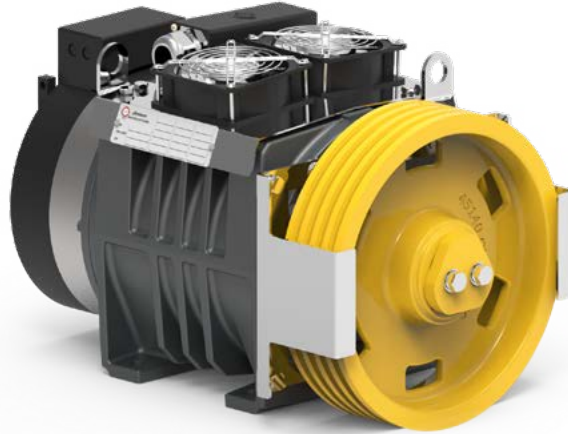
		绳槽 Ropes			尺寸 Dimensions				
		曳引轮直径 ØD	宽度 F	绳径 Ø	绳槽数 n°	槽距 Pitch	A	B	C
mm		mm	max	mm	mm	mm	mm	mm	mm
240	105	6,5	10	9,5	562	262	344	74	
320	79	8	5	12		342	362		

1 - 数据如有更改，恕不另行通知

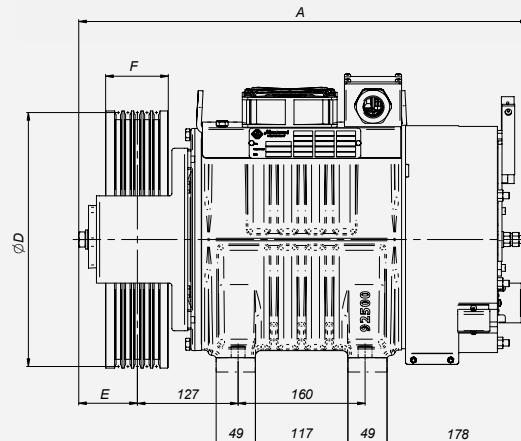
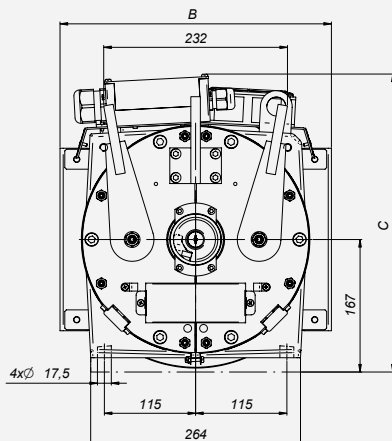
1 - Data are subject to change without prior notice.

2 - 我们能够提供带电源线和不带电源线两种配置的机器

2 - We are able to offer machines with and without power cable configurations.

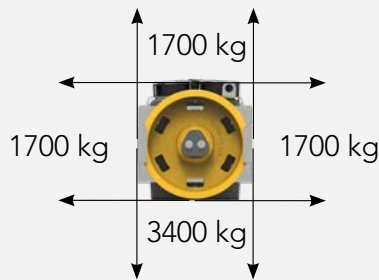


额定载重 Load		Ø	绳槽 Ropes	槽距 Pitch	额定扭矩 Torque	额定功率 Power	额定转速 RPM	额定频率 Freq.	额定电流	额定电流
									Current 220V	Current 380V
kg	m/s	mm	max	mm	Nm	kW	RPM	Hz	A	A
450	1,00	320	5xØ8	12	229	2,86	119	15,9	16,0	7,6
	0,63	320	5xØ8	12	279	2,20	75	10,0	19,6	9,3
550	1,00	320	5xØ8	12	279	3,49	119	15,9	19,6	9,3
	1,50	320	5xØ8	12	279	5,24	179	23,9	29,4	13,4
	1,75	320	5xØ8	12	279	6,11	209	27,9	25,4	14,2
	2,00	320	5xØ8	12	279	6,98	239	31,8	37,9	19,6
	2,50	320	5xØ8	12	279	8,73	298	39,8	37,9	25,4
	0,63	320	5xØ8	12	320	2,52	75	10,0	22,4	10,7
630	1,00	320	5xØ8	12	320	4,00	119	15,9	22,4	10,7
	1,50	320	5xØ8	12	320	6,22	179	23,9	33,8	15,3
	1,75	320	5xØ8	12	320	7,00	209	27,9	33,7	16,2
	2,00	320	5xØ8	12	320	8,00	239	31,8	43,4	22,4
	2,50	320	5xØ8	12	320	10,00	298	39,8	43,4	29,1
800	0,63	240	10xØ6.5	9,5	305	3,20	100	13,4	32,1	14,6
	1,00	240	10xØ6.5	9,5	305	5,08	159	21,2	32,1	14,6
	1,50	240	10xØ6.5	9,5	305	7,62	239	31,8	41,3	21,4
	1,75	240	10xØ6.5	9,5	305	8,89	279	37,1	41,3	21,4
	2,00	240	10xØ6.5	9,5	305	10,16	318	42,4	41,3	27,7





主轴静载  
Static Load



自重  
Weight

220 kg

额定扭矩 Nominal Torque	极数 Poles	编码器 Encoder
Nm		
<b>530</b> <b>S5 - 40% ED</b> <b>180 s/h</b>	16	ERN1387 ECN1313 EI53C9.25 TS5213N2531
<b>制动器</b> <b>Brake</b>		
EMFS DC110V/2X1.0A [2X650Nm]		

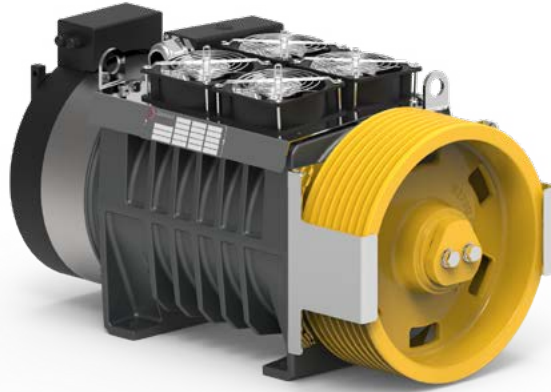
		绳槽 Ropes			尺寸 Dimensions			
曳引轮直径 ØD	宽度 F	绳径 Ø	绳槽数 n°	槽距 Pitch	A	B	C	E
mm		mm	max	mm	mm	mm	mm	mm
240	105	6,5	10	9,5	679	262	362	74
320	114	8	9	12		342		

1 - 数据如有更改，恕不另行通知

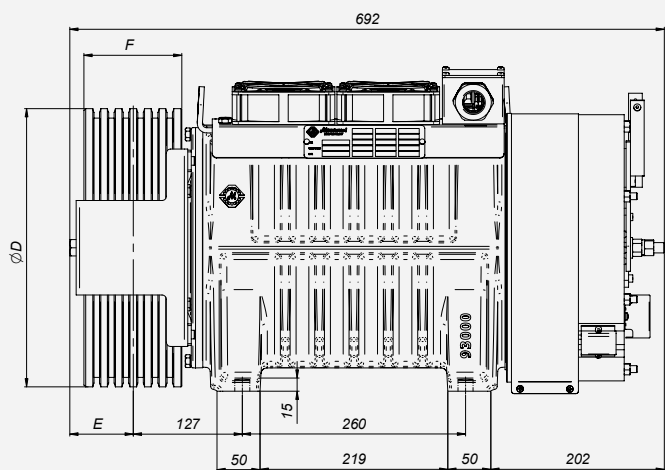
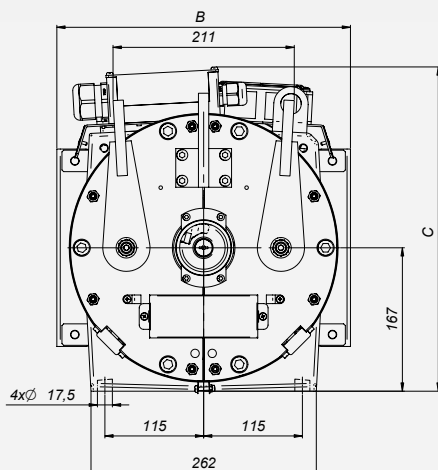
1 - Data are subject to change without prior notice.

2 - 我们能够提供带电源线和不带电源线两种配置的机器

2 - We are able to offer machines with and without power cable configurations.

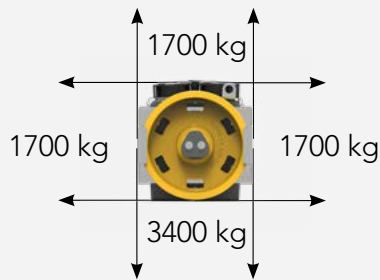


	额定载重 Load		∅	绳槽 Ropes	槽距 Pitch	额定扭矩 Torque	额定功率 Power	额定转速 RPM	额定频率 Freq.	额定电流 Current 220V	额定电流 Current 380V
	kg	m/s	mm	max	mm	Nm	kW	RPM	Hz	A	A
<b>2:1</b>	800	0,63	320	7x∅8	12	349	2,75	75	10,0	24,4	10,2
		1,0	320	7x∅8	12	406	5,08	119	15,9	28,4	11,9
		1,5	320	7x∅8	12	406	7,62	179	23,9	34,5	15,5
		1,75	320	7x∅8	12	406	8,89	209	27,9	46,0	19,7
		2,0	320	7x∅8	12	406	10,16	239	31,8	46,0	26,1
	1000	2,5	320	7x∅8	12	406	12,70	298	39,8	59,0	29,2
		0,63	320	8x∅8	12	436	3,43	75	10,0	30,4	14,3
		1,0	320	8x∅8	12	436	5,45	119	15,9	30,4	14,3
		1,5	320	8x∅8	12	508	9,52	179	23,9	43,1	22,8
		1,75	320	8x∅8	12	508	11,11	209	27,9	57,5	25,6
	1200	2,0	320	8x∅8	12	508	12,70	239	31,8	57,5	32,3
		2,5	320	8x∅8	12	508	15,87	298	39,8	73,8	36,5
		0,63	240	10x∅6.5	9,5	457	4,80	100	13,4	38,8	20,5
		1,0	240	10x∅6.5	9,5	457	7,62	159	21,2	38,8	20,5
		1,5	240	10x∅6.5	9,5	457	11,43	239	31,8	66,4	31,9
	1,75	240	10x∅6.5	9,5	457	13,33	279	37,1	66,4	31,9	
	2,0	240	10x∅6.5	9,5	457	15,23	318	42,4	66,4	38,8	





主轴静载  
Static Load



自重  
Weight 240 kg

额定扭矩 <b>Nominal Torque</b>	极数 <b>Poles</b>	编码器 <b>Encoder</b>
<b>Nm</b>		
<b>630 S5 - 40% ED 180 s/h</b>	16	ERN1387 ECN1313 EI53C9.25 TS5213N2531
<b>制动器 Brake</b>		
EMFS DC110V/2X1.0A [2X650Nm]		

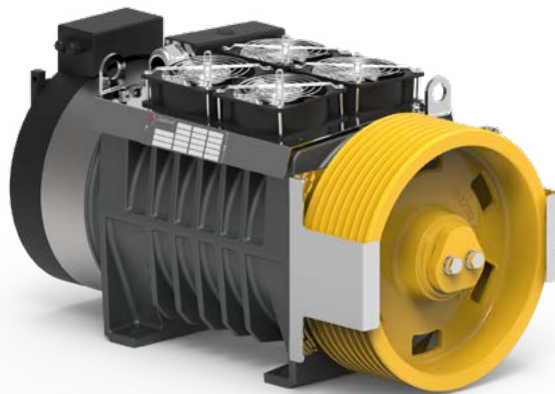
 曳引轮直径 ØD		绳槽 Ropes			尺寸 Dimensions			
		宽度 F	绳径 Ø	绳槽数 n°	槽距 Pitch	A	B	C
mm		mm	max	mm	mm	mm	mm	mm
240	105	6,5	10	9,5	679	262	362	74
320	114	8	9	12		342		

1 - 数据如有更改，恕不另行通知

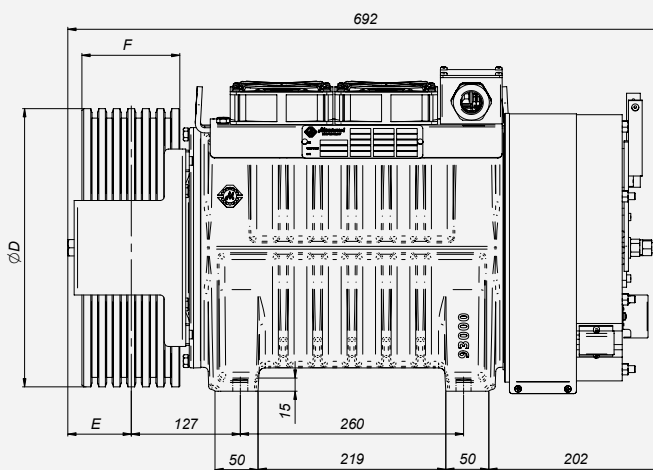
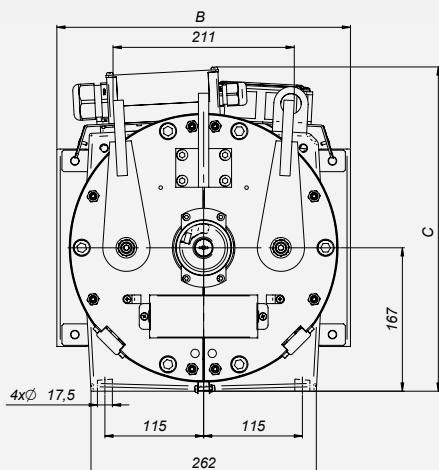
1 - Data are subject to change without prior notice.

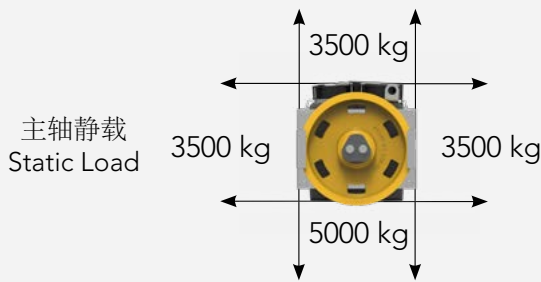
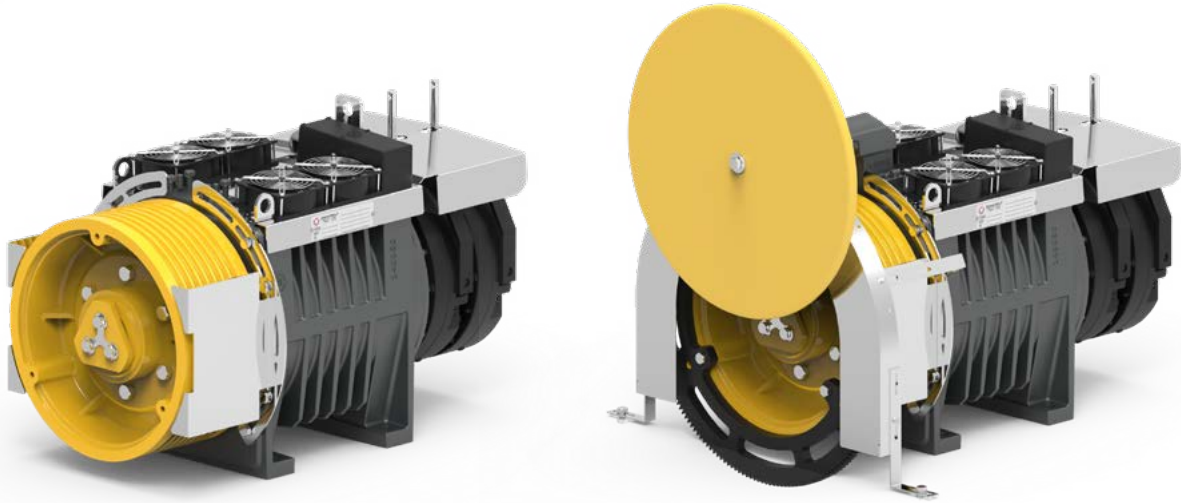
2 - 我们能够提供带电源线和不带电源线两种配置的机器

2 - We are able to offer machines with and without power cable configurations.



2:1	额定载重 Load		∅	绳槽 Ropes	槽距 Pitch	额定扭矩 Torque	额定功率 Power	额定转速 RPM	额定频率 Freq.	额定电流 Current 220V	额定电流 Current 380V
	kg	m/s	mm	max	mm	Nm	kW	RPM	Hz	A	A
1150	0,63	320	8x∅8	12	584	4,60	75	10,0	37,1	20,4	
	1,0	320	8x∅8	12	584	7,30	119	15,9	37,1	20,4	
	1,5	320	8x∅8	12	584	10,95	179	23,9	48,2	29,7	
	1,75	320	8x∅8	12	584	12,77	209	27,9	68,6	29,7	
	2,00	320	8x∅8	12	584	14,60	239	31,8	68,6	37,1	
	2,50	320	8x∅8	12	584	18,25	298	39,8	68,7	37,1	
1200	0,63	320	9x∅8	12	523	4,12	75	10,0	35,2	19,3	
	1,0	320	9x∅8	12	523	6,54	119	15,9	35,2	19,3	
	1,5	320	9x∅8	12	609	11,43	179	23,9	71,6	31,0	
	1,75	320	9x∅8	12	609	13,33	209	27,9	71,6	31,0	
	2,0	320	9x∅8	12	609	15,23	239	31,8	71,6	38,7	
	2,5	320	9x∅8	12	609	19,04	298	39,8	83,2	50,3	
1500	0,63	240	10x∅6.5	9,5	571	6,00	100	13,4	47,2	25,4	
	1,0	240	10x∅6.5	9,5	571	9,52	159	21,2	47,2	25,4	
	1,5	240	10x∅6.5	9,5	571	14,28	239	31,8	67,1	36,3	
	1,75	240	10x∅6.5	9,5	571	16,66	279	37,1	67,1	36,3	
	2,00	240	10x∅6.5	9,5	571	19,04	318	42,4	78,0	47,2	






主轴静载  
Static Load

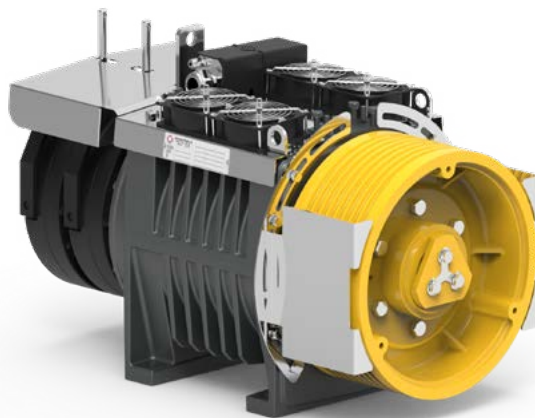
自重  
Weight

472 kg

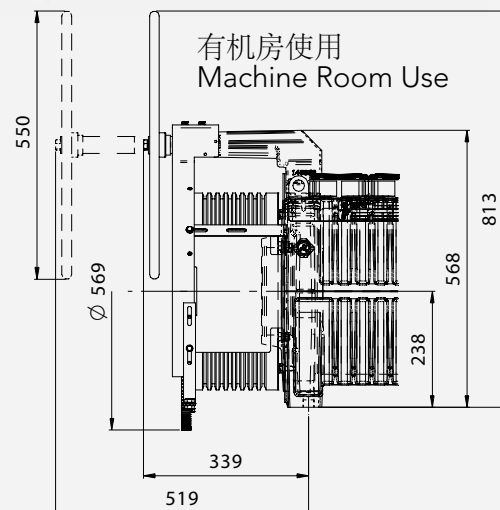
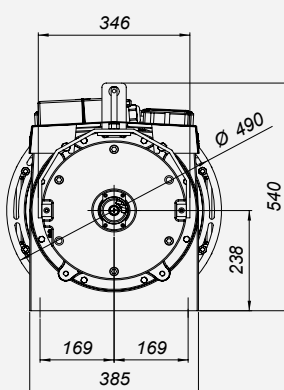
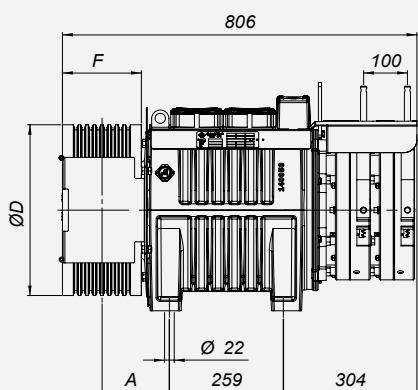
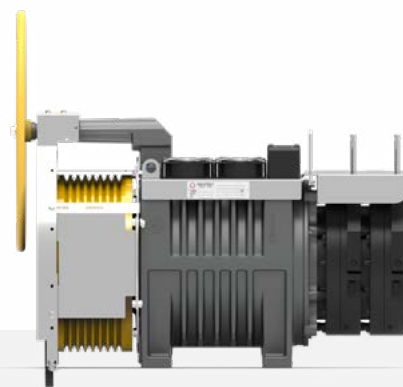
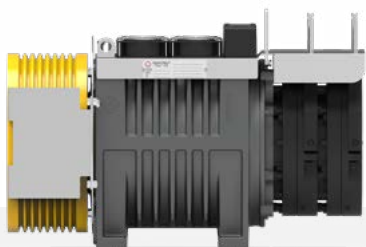
额定扭矩 Nominal Torque	极数 Poles	编码器 Encoder
Nm		
<b>850</b> <b>S5 - 40% ED</b> <b>180 s/h</b>	16	ERN1387 ECN1313 EI53C9.25 TS5213N2531
<b>制动器</b> <b>Brake</b>		
EMFR1400 DC110V/2X2.03A[2X1400Nm]		

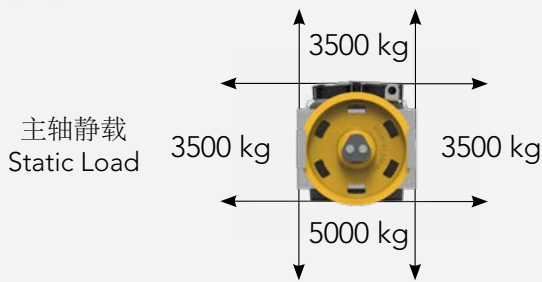
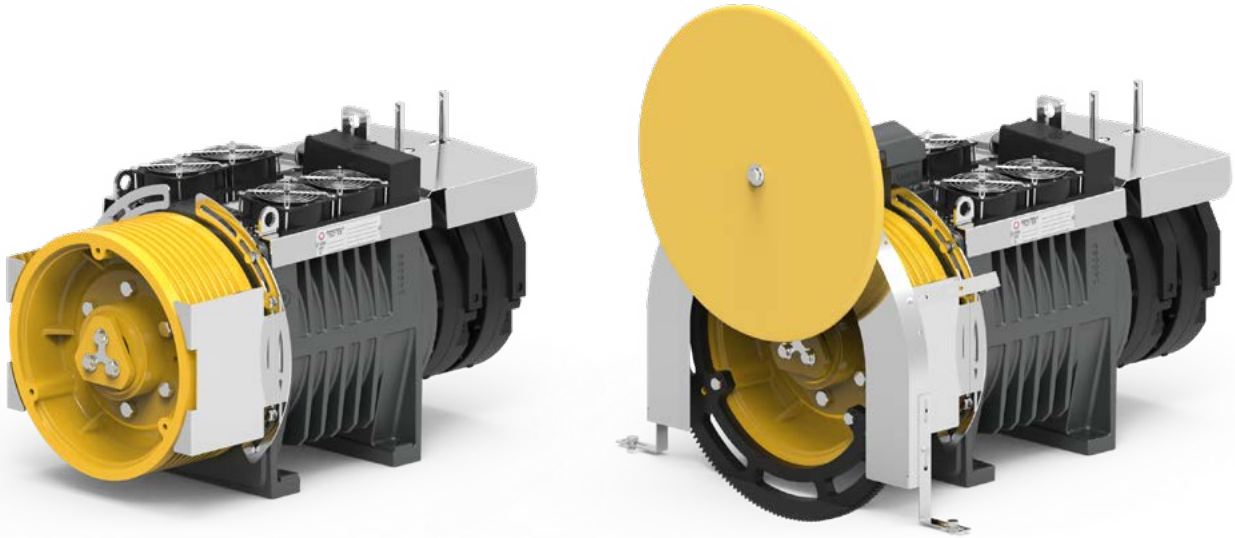
		绳槽 Ropes			尺寸 Dimensions
曳引轮直径 ØD	宽度 F	绳径 Ø	绳槽数 n°	槽距 Pitch	A
mm	mm	mm	max	mm	mm
320	180	8	10	17	153
400		10			

1 - 数据如有更改，恕不另行通知  
1 - Data are subject to change without prior notice.  
2 - 我们能够提供带电源线和不带电源线两种配置的机器  
2 - We are able to offer machines with both power cable and no power cable configurations.



2:1	额定载重 Load	额定速度 Speed	∅	绳槽 Ropes	槽距 Pitch	额定扭矩 Torque	额定功率 Power	额定转速 RPM	额定频率 Freq.	额定电流 Current 380V
	kg	m/s	mm	max	mm	Nm	kW	RPM	Hz	A
1350	0,63	400	10x∅10	17	885	5,6	60	8,0	18,2	
	1,0	400	10x∅10	17	885	8,9	95	12,7	25,6	
	1,6	400	10x∅10	17	885	14,2	153	20,4	44,3	
	2,0	400	10x∅10	17	885	17,7	191	25,5	44,3	
	2,5	400	10x∅10	17	885	22,1	239	31,8	59,0	
1600	0,63	320	10x∅8	17	812	6,4	75	10,0	22,9	
	1,0	320	10x∅8	17	812	10,2	119	15,9	26,7	
	1,6	320	10x∅8	17	812	16,2	191	25,5	41,1	
	2,0	320	10x∅8	17	812	20,3	239	31,8	41,1	
	2,5	320	10x∅8	17	812	25,4	298	39,8	55,4	





主轴静载  
Static Load

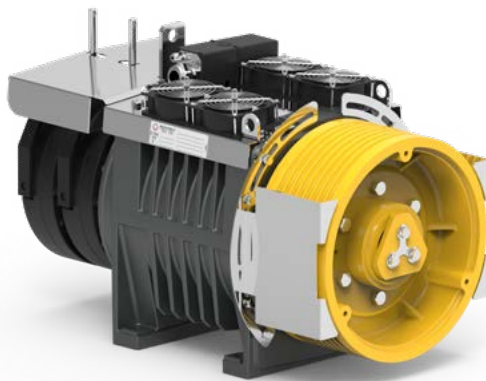
自重  
Weight

539 kg

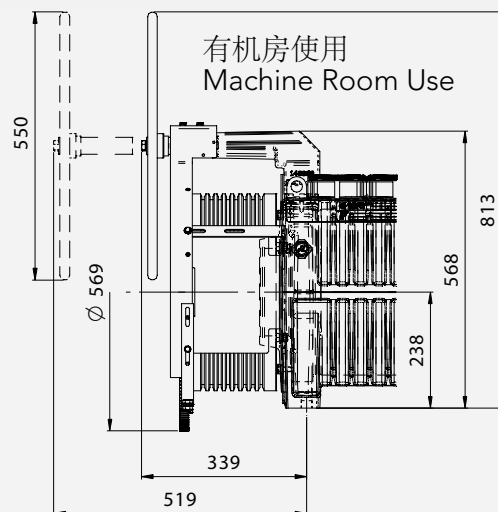
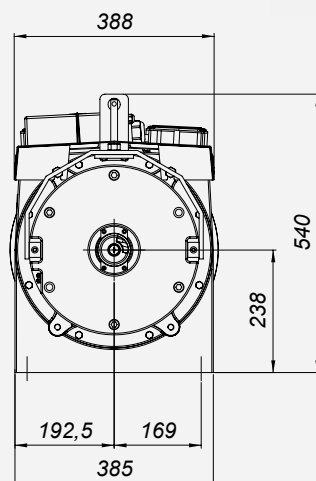
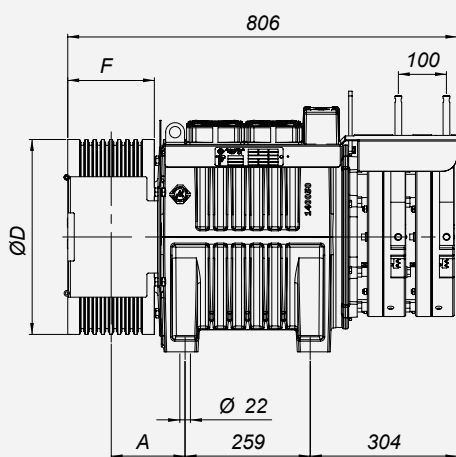
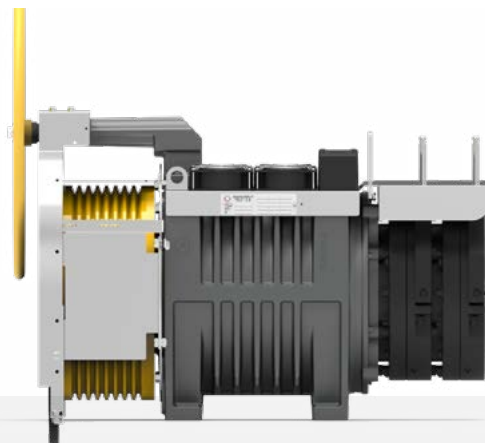
额定扭矩 Nominal Torque	极数 Poles	编码器 Encoder
Nm		
<b>1050</b> <b>S5 - 40% ED</b> <b>180 s/h</b>	16	ERN1387 ECN1313 EI53C9.25 TS5213N2531
制动器 <b>Brake</b>		
EMFR1400 DC110V/2X2.03A[2X1400Nm]		

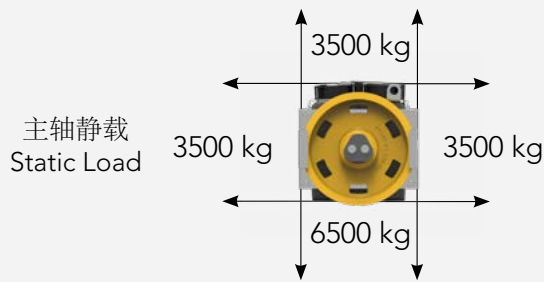
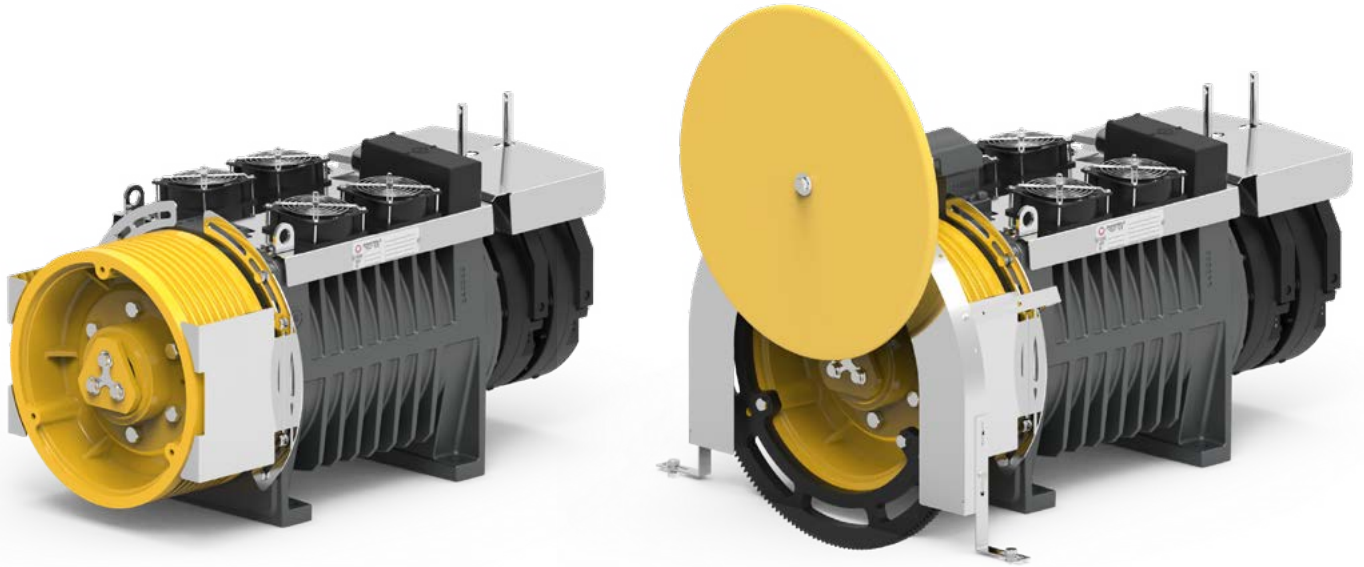
曳引轮直径 ØD		绳槽 Ropes			尺寸 Dimensions
宽度 F	绳径 Ø	绳槽数 n°	槽距 Pitch	A	
mm	mm	max	mm	mm	
320	180	8	17	153	
400		10			

- 1 - 数据如有更改，恕不另行通知  
1 - Data are subject to change without prior notice.  
2 - 我们能够提供带电源线和不带电源线两种配置的机器  
2 - We are able to offer machines with both power cable and no power cable configurations.




2:1	额定载重 Load	额定速度 Speed	∅	绳槽 Ropes	槽距 Pitch	额定扭矩 Torque	额定功率 Power	额定转速 RPM	额定频率 Freq.	额定电流 Current 380V
	kg	m/s	mm	max	mm	Nm	kW	RPM	Hz	A
1600	0,63	0,63	320	10x∅8	17	812	6,4	75	10,0	16,2
	0,63	400	10x∅10	17	1016	6,4	60	8,0	20,3	
	1,0	320	10x∅8	17	812	10,2	119	15,9	23,6	
	1,0	400	10x∅10	17	1016	10,2	95	12,7	29,5	
	1,6	320	10x∅8	17	812	16,2	191	25,5	44,9	
	1,6	400	10x∅10	17	1016	16,3	153	20,4	41,6	
	2,0	320	10x∅8	17	812	20,3	239	31,8	44,9	
	2,0	400	10x∅10	17	1016	20,3	191	25,5	51,6	
	2,5	320	10x∅8	17	812	25,4	298	39,8	53,4	
	2,5	400	10x∅10	17	1016	25,4	239	31,8	56,1	
	3,0	320	10x∅8	17	812	30,5	358	47,7	65,8	
	3,0	400	10x∅10	17	1016	30,5	286	38,2	66,7	
2000	0,63	320	10x∅8	17	997	7,9	75	10,0	19,9	
	1,0	320	10x∅8	17	997	12,5	119	15,9	29,0	
	1,6	320	10x∅8	17	997	19,9	191	25,5	55,1	
	2,0	320	10x∅8	17	997	24,9	239	31,8	65,5	
	2,5	320	10x∅8	17	997	31,2	298	39,8	80,7	



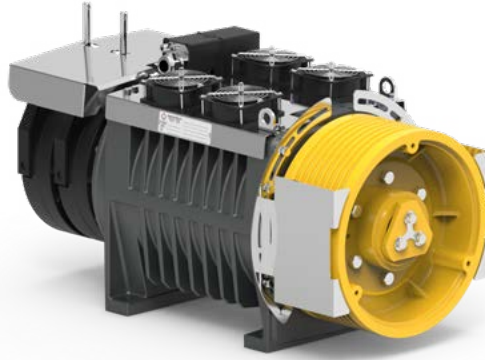


自重  
Weight | 623 kg

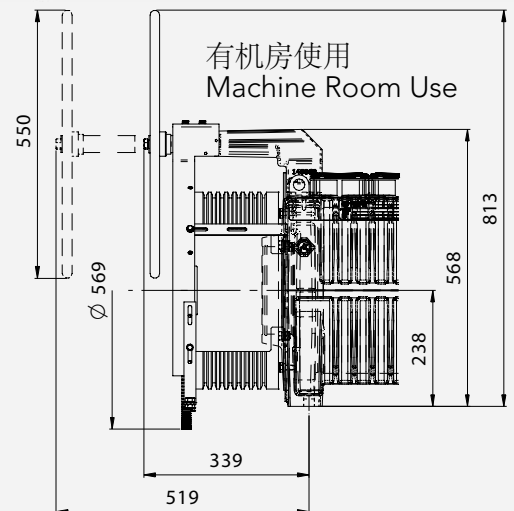
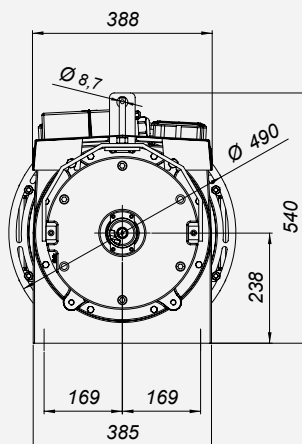
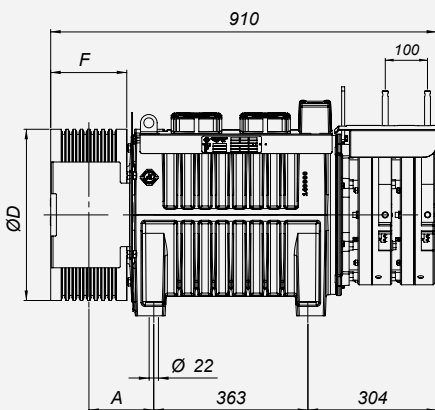
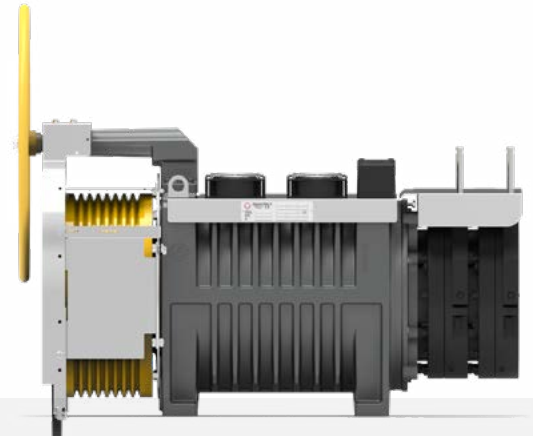
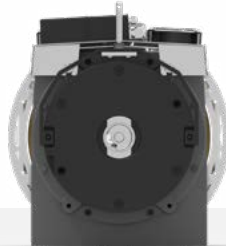
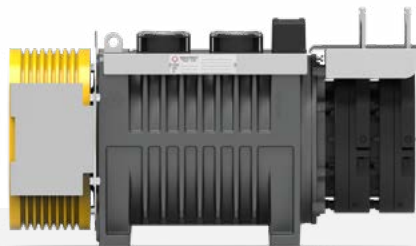
额定扭矩 Nominal Torque	极数 Poles	编码器 Encoder
Nm		
<b>1400 S5 - 40% ED 180 s/h</b>	16	ERN1387 ECN1313 EI53C9.25 TS5213N2531
<b>制动器 Brake</b>		
EMFR1400 DC110V/2X2.03A[2X1400Nm]		

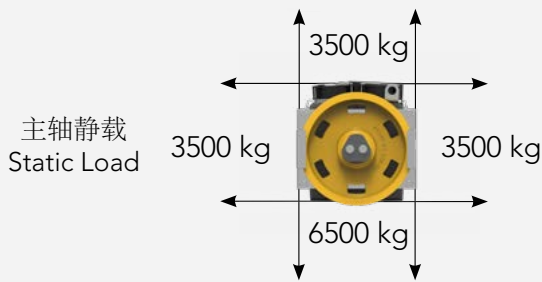
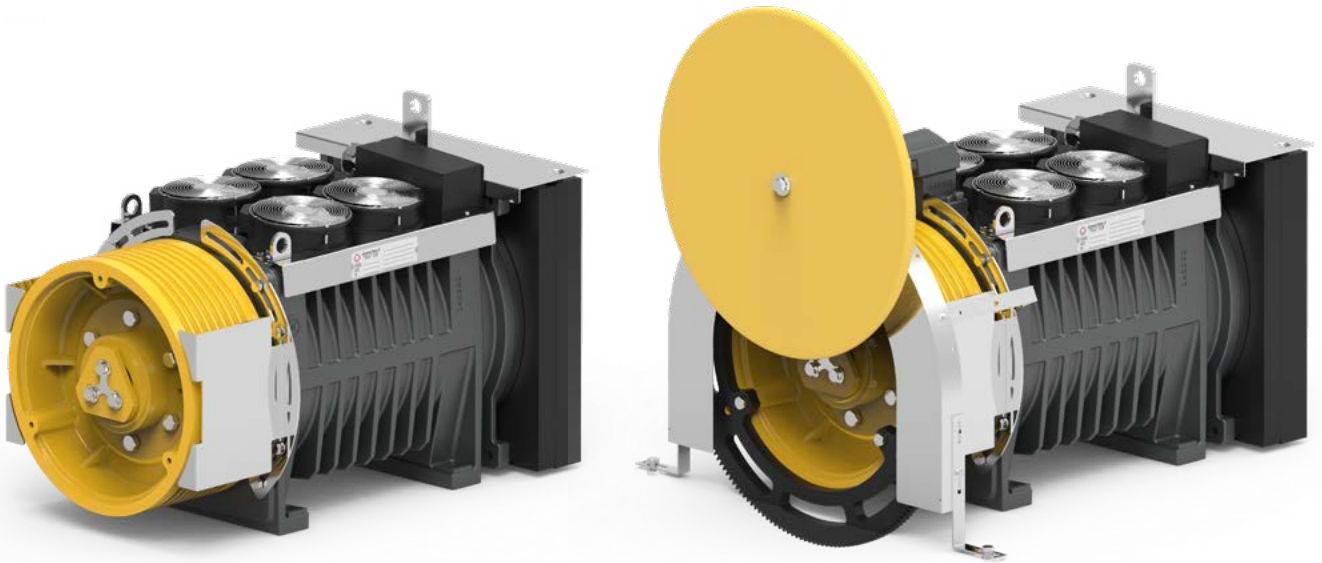
		绳槽 Ropes			尺寸 Dimensions
曳引轮直径 ØD	宽度 F	绳径 Ø	绳槽数 n°	槽距 Pitch	A
mm	mm	mm	max	mm	mm
320	180	8	10	17	153
400		10			

- 1 - 数据如有更改，恕不另行通知  
1 - Data are subject to change without prior notice.  
2 - 我们能够提供带电源线和不带电源线两种配置的机器  
2 - We are able to offer machines with both power cable and no power cable configurations.




2:1	额定载重	额定速度	∅	绳槽	槽距	额定扭矩	额定功率	额定转速	额定频率	额定电流
	Load	Speed	mm	Ropes	Pitch	Torque	Power	RPM	Freq.	Current 380V
	kg	m/s	mm	max	mm	Nm	kW	RPM	Hz	A
2000	0,63	320	10x∅8	17	997	7,9	75	10,0	25,6	
	0,63	400	10x∅10	17	1246	7,8	60	8,0	20,9	
	1,0	320	10x∅8	17	997	12,5	119	15,9	28,5	
	1,0	400	10x∅10	17	1246	12,5	95	12,7	32,1	
	1,6	320	10x∅8	17	997	19,9	191	25,5	41,3	
	1,6	400	10x∅10	17	1246	19,9	153	20,4	51,6	
	2,0	320	10x∅8	17	997	24,9	239	31,8	51,3	
	2,0	400	10x∅10	17	1246	24,9	191	25,5	51,6	
	2,5	320	10x∅8	17	997	31,2	298	39,8	68,4	
	2,5	400	10x∅10	17	1246	31,2	239	31,8	64,1	
2500	3	400	10x∅10	17	1246	37,4	286	38,2	85,5	
	0,63	320	10x∅8	17	1228	9,7	75	10,0	31,6	
	1	320	10x∅8	17	1228	15,4	119	15,9	35,1	
	1,6	320	10x∅8	17	1228	24,6	191	25,5	50,9	
	2	320	10x∅8	17	1228	30,7	239	31,8	63,2	
	2,5	320	10x∅8	17	1228	38,4	298	39,8	84,2	





自重  
Weight | 677 kg

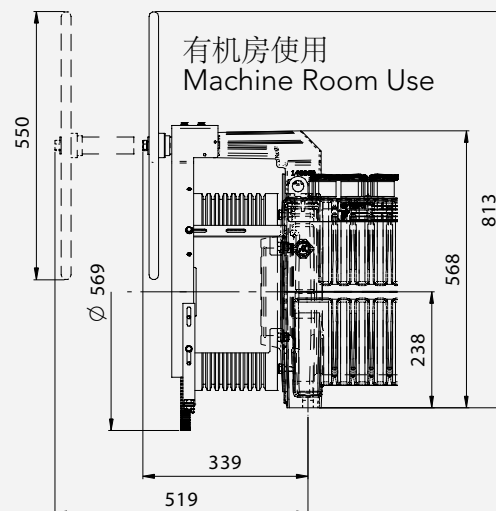
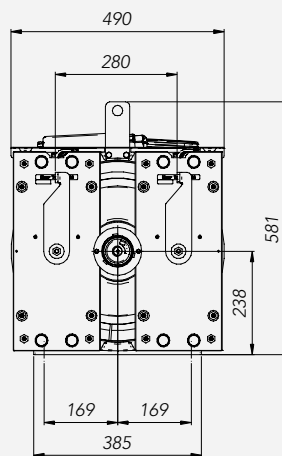
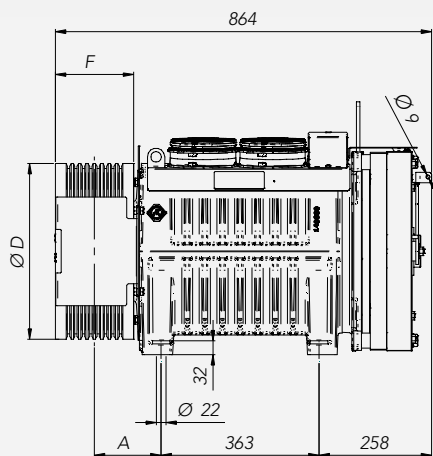
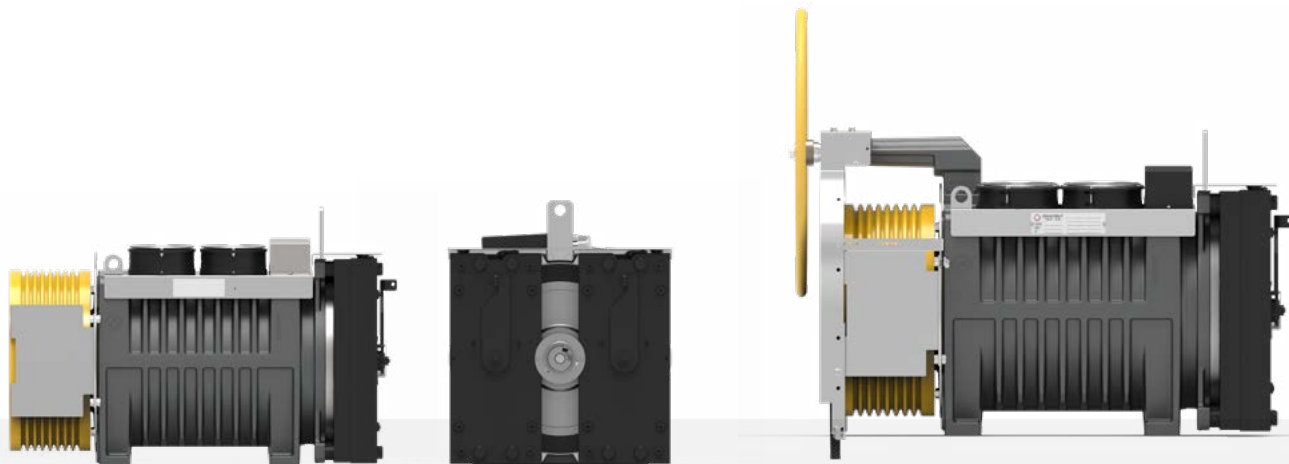
额定扭矩 <b>Nominal Torque</b>	极数 <b>Poles</b>	编码器 <b>Encoder</b>
<b>Nm</b>		
<b>1650</b> <b>S5 - 40% ED</b> <b>180 s/h</b>	16	ERN1387 ECN1313 EI53C9.25 TS5213N2531
<b>制动器</b> <b>Brake</b>		
RSR1500 [2x1700Nm] 2X165W - 207V <sub>DC</sub>		

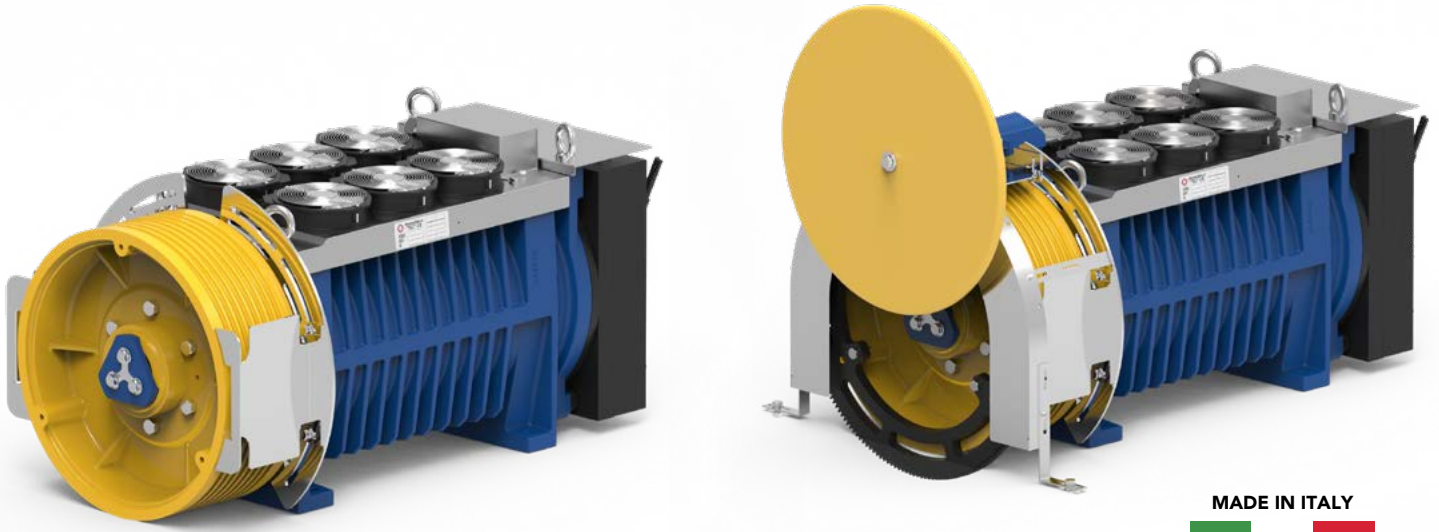
		绳槽 Ropes			尺寸 Dimensions
曳引轮直径 ØD	宽度 F	绳径 Ø	绳槽数 n°	槽距 Pitch	A
mm	mm	mm	max	mm	mm
320	180	8	10	17	153
400		10			

- 1 - 数据如有更改，恕不另行通知  
1 - Data are subject to change without prior notice.  
2 - 我们能够提供带电源线和不带电源线两种配置的机器  
2 - We are able to offer machines with both power cable and no power cable configurations.

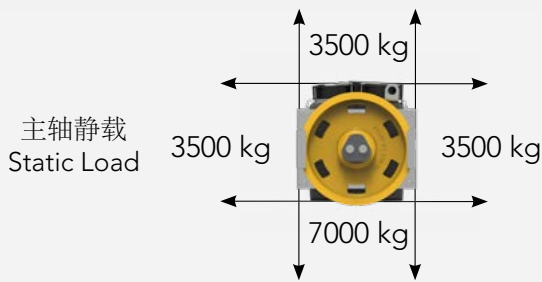


2:1	额定载重	额定速度	Ø	绳槽	槽距	额定扭矩	额定功率	额定转速	额定频率	额定电流
	Load	Speed	mm	Ropes	Pitch	Torque	Power	RPM	Freq.	Current 380V
	kg	m/s	mm	max	mm	Nm	kW	RPM	Hz	A
2500	0,63	320	10xØ8	17	1228	9,7	75	10,0	31,8	
	0,63	400	10xØ10	17	1535	9,7	60	8,0	39,8	
	1,0	320	10xØ8	17	1228	15,4	119	15,9	35,6	
	1,0	400	10xØ10	17	1535	15,4	95	12,7	39,8	
	1,6	320	10xØ8	17	1228	24,6	191	25,5	51,5	
	1,6	400	10xØ10	17	1535	24,6	153	20,4	64,4	
	2,0	320	10xØ8	17	1228	30,7	239	31,8	64,4	
	2,0	400	10xØ10	17	1535	30,7	191	25,5	64,4	
	2,5	320	10xØ8	17	1228	38,4	298	39,8	85,7	
	2,5	400	10xØ10	17	1535	38,4	239	31,8	80,5	
3000	3,0	400	10xØ10	17	1535	46,1	286	38,2	107,1	
	0,63	320	10xØ8	17	1459	11,5	75	10,0	37,8	
	1,0	320	10xØ8	17	1459	18,2	119	15,9	42,3	
	1,6	320	10xØ8	17	1459	29,2	191	25,5	61,2	
	2,0	320	10xØ8	17	1459	36,5	239	31,8	76,5	
	2,5	320	10xØ8	17	1459	45,6	298	39,8	101,8	





MADE IN ITALY



自重  
Weight

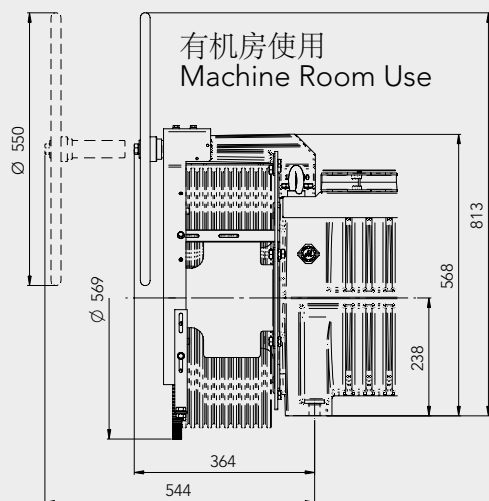
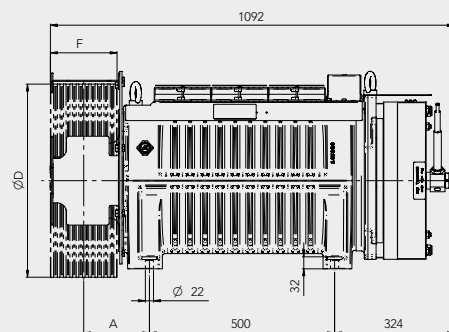
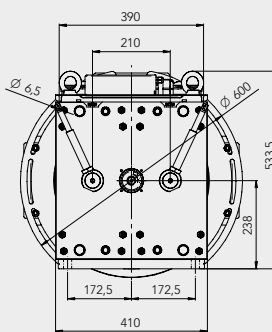
750 kg

额定扭矩 Nominal Torque	极数 Poles	编码器 Encoder
Nm		
<b>2200</b> <b>S5 - 40% ED</b> <b>180 s/h</b>	16	ERN1387 ECN1313 EI53C9.25 TS5213N2531
<b>制动器</b> <b>Brake</b>		
RTW2000 [2x2200Nm] 2X178W - 207V <sub>DC</sub>		

		绳槽 Ropes			尺寸 Dimensions
曳引轮直径 ØD	宽度 F	绳径 Ø	绳槽数 n°	槽距 Pitch	A
mm	mm	mm	max	mm	mm
400	180	10	10	17	177,5
440		11			
480		12	8	20	
520		13			

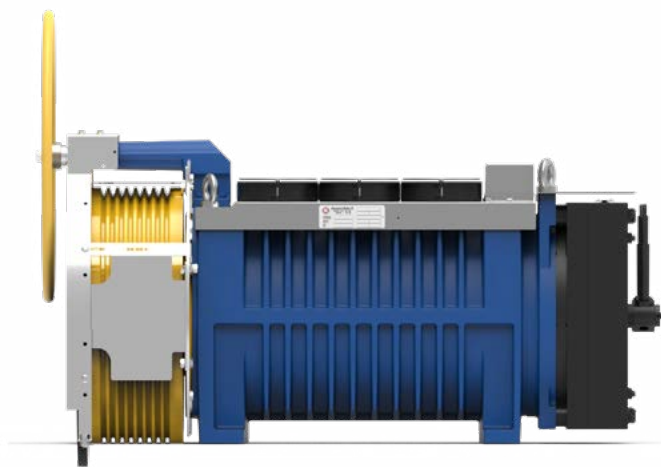
- 1 - 数据如有更改，恕不另行通知
- 1 - Data are subject to change without prior notice.
- 2 - 我们能够提供带电源线和不带电源线两种配置的机器
- 2 - We are able to offer machines with both power cable and no power cable configurations.

曳引比 ROPING	曳引轮 PULLEY	额定载重 Load								
		kg								
		1300	1375	1500	2500	2750	3000	5000	5500	6000
1:1	440									
	480									
	520									
2:1	400									
	440									
	480									
	520									
4:1	440									
	480									
	520									



仅在以下曳引轮直径下可选配紧急盘车装置:  
Emergency flywheel only with pulley:

400 - 480 - 520 mm



从无机房到有机房，盘车装置可以根据需要提供  
The MRL to MR switch kit is on demand.

1:1	额定载重 Load	额定速度 Speed	∅	额定扭矩 Torque	额定功率 Power	额定转速 RPM	额定频率 Freq.	额定电流 Current 210V	额定电流 Current 380V
	kg	m/s	mm	Nm	kW	RPM	Hz	A	A
1300	0,63	480	1967	5,2	25,1	3,3	72,8	36,0	
		520	2131	5,2	23,1	3,1	78,8	39,0	
	1	480	1884	7,8	39,8	5,3	72,8	36,0	
		520	2040	7,8	36,7	4,9	78,8	39,0	
	1,5	480	1884	11,8	59,7	8,0	72,8	36,0	
		520	2040	11,8	55,1	7,3	78,8	39,0	
	1,75	480	1884	13,7	69,6	9,3	95,0	49,7	
		520	2040	13,7	64,3	8,6	103,0	53,8	
	2	480	1884	15,7	79,6	10,6	95,0	49,7	
		520	2040	15,7	73,5	9,8	103,0	53,8	
	2,5	480	1884	19,6	99,5	13,3	133,6	60,8	
		520	2040	19,6	91,8	12,2	103,0	53,8	
	3	480	1884	23,5	119,4	15,9	133,6	60,8	
		520	2040	23,5	110,2	14,7	103,0	53,8	
	3,5	480	1884	27,5	139,3	18,6	133,6	72,8	
		520	2040	27,5	128,5	17,1	144,7	65,9	
	4	480	1884	31,4	159,2	21,2	166,9	72,8	
		520	2040	31,4	146,9	19,6	144,7	78,8	
1500	0,63	440	1980	5,7	27,3	3,6	76,5	37,8	
		440	1980	9,0	43,4	5,8	76,5	37,8	
	1,5	440	1980	13,5	65,1	8,7	99,9	52,2	
		440	1980	15,8	76,0	10,1	99,9	52,2	
	2	440	1980	18,0	86,8	11,6	99,9	52,2	
		440	1980	22,5	108,5	14,5	140,4	63,9	
	3	440	1980	27,0	130,2	17,4	140,4	63,9	
		440	1980	31,5	151,9	20,3	175,5	76,5	
4	440	1980	36,0	173,6	23,1	175,5	99,9		

2:1	额定载重 Load	额定速度 Speed	∅	额定扭矩 Torque	额定功率 Power	额定转速 RPM	额定频率 Freq.	额定电流 Current 210V	额定电流 Current 380V
	kg	m/s	mm	Nm	kW	RPM	Hz	A	A
2500	0,63	480	1814	9,5	50,1	6,7	70,1	34,6	
		520	1965	9,5	46,3	6,2	75,9	37,5	
	1	480	1814	15,1	79,6	10,6	91,5	47,8	
		520	1965	15,1	73,5	9,8	99,2	51,8	
	1,5	480	1814	22,7	119,4	15,9	128,6	58,6	
		520	1965	22,7	110,2	14,7	139,4	63,4	
	1,75	480	1814	26,5	139,3	18,6	128,6	70,1	
		520	1965	26,5	128,5	17,1	139,4	63,4	
	2	480	1814	30,2	159,2	21,2	160,8	70,1	
		520	1965	30,2	146,9	19,6	139,4	75,9	
	2,5	480	1814	37,8	198,9	26,5	160,8	91,5	
		520	1965	37,8	183,6	24,5	174,2	99,2	
	3	480	1814	45,4	238,7	31,8		128,6	
		520	1965	45,4	220,4	29,4	174,2	139,4	
	3,5	480	1814	52,9	278,5	37,1		128,6	
		520	1965	52,9	257,1	34,3		139,4	
	4	520	1965	60,5	293,8	39,2		139,4	
		400	1800	11,3	60,2	8,0	69,6	34,4	
3000	0,63	440	1980	11,3	54,7	7,3	76,5	37,8	
		400	1800	18,0	95,5	12,7	90,8	47,5	
	1	440	1980	18,0	86,8	11,6	99,9	52,2	
		400	1800	27,0	143,2	19,1	127,7	69,6	
	1,5	440	1980	27,0	130,2	17,4	140,4	63,9	
		400	1800	31,5	167,1	22,3	159,6	90,8	
	1,75	440	1980	31,5	151,9	20,3	175,5	76,5	
		400	1800	36,0	191,0	25,5	159,6	90,8	
	2	440	1980	36,0	173,6	23,1	175,5	99,9	
		400	1800	45,0	238,7	31,8		127,7	
	2,5	440	1980	45,0	217,0	28,9	175,5	140,4	
		400	1800	54,0	286,5	38,2		127,7	
	3	440	1980	54,0	260,4	34,7		140,4	

额定载重 Load	额定速度 Speed	∅	额定扭矩 Torque	额定功率 Power	额定转速 RPM	额定频率 Freq.	额定电流 Current 210V	额定电流 Current 380V	
kg	m/s	mm	Nm	kW	RPM	Hz	A	A	
4000	0,5	440	1346	12,2	86,8	11,6	67,9	35,5	
		480	1468	12,2	79,6	10,6	74,1	38,7	
		520	1590	12,2	73,5	9,8	80,2	41,9	
	0,63	440	1346	15,4	109,4	14,6	95,4	43,4	
		480	1468	15,4	100,3	13,4	104,1	47,4	
		520	1590	15,4	92,6	12,3	80,2	41,9	
	1	440	1346	24,5	173,6	23,1	119,3	67,9	
		480	1468	24,5	159,2	21,2	130,1	56,7	
		520	1590	24,5	146,9	19,6	112,8	61,4	
	1,5	440	1346	36,7	260,4	34,7		95,4	
		480	1468	36,7	238,7	31,8		104,1	
		520	1590	36,7	220,4	29,4	141,0	112,8	
	1,6	440	1346	39,1	277,8	37,0		95,4	
		480	1468	39,1	254,6	34,0		104,1	
		520	1590	39,1	235,1	31,3		112,8	
	1,75	480	1468	42,8	278,5	37,1		104,1	
		520	1590	42,8	257,1	34,3		112,8	
	2	520	1590	48,9	293,8	39,2		112,8	
	5000	0,5	440	1663	15,1	86,8	11,6	83,9	43,8
			480	1814	15,1	79,6	10,6	91,5	47,8
			520	1965	15,1	73,5	9,8	99,2	51,8
		0,63	440	1663	19,0	109,4	14,6	117,9	53,7
			480	1814	19,0	100,3	13,4	128,6	58,6
			520	1965	19,0	92,6	12,3	99,2	51,8
		1	440	1663	30,2	173,6	23,1	147,4	83,9
			480	1814	30,2	159,2	21,2	160,8	70,1
			520	1965	30,2	146,9	19,6	139,4	75,9
1,5		440	1663	45,4	260,4	34,7		117,9	
		480	1814	45,4	238,7	31,8		128,6	
		520	1965	45,4	220,4	29,4	174,2	139,4	
1,6		440	1663	48,4	277,8	37,0		117,9	
		480	1814	48,4	254,6	34,0		128,6	
		520	1965	48,4	235,1	31,3		139,4	
1,75		480	1814	52,9	278,5	37,1		128,6	
		520	1965	52,9	257,1	34,3		139,4	
2		520	1965	60,5	293,8	39,2		139,4	
6000		0,5	440	1980	18,0	86,8	11,6	99,9	52,2
		0,63	440	1980	22,7	109,4	14,6	140,4	63,9
		1	440	1980	36,0	173,6	23,1	175,5	99,9
		1,5	440	1980	54,0	260,4	34,7		140,4
		1,6	440	1980	57,6	277,8	37,0		140,4



*Montanari*  
DRIVE TECHNOLOGY

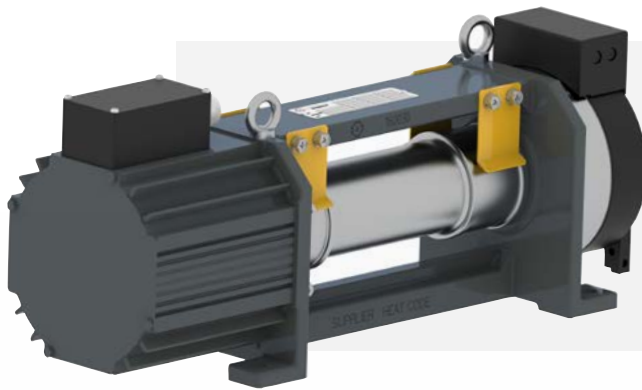


# 钢带无齿轮 **BELT GEARLESS**

# 系列概览 **RANGE OVERVIEW**



**MDG45**



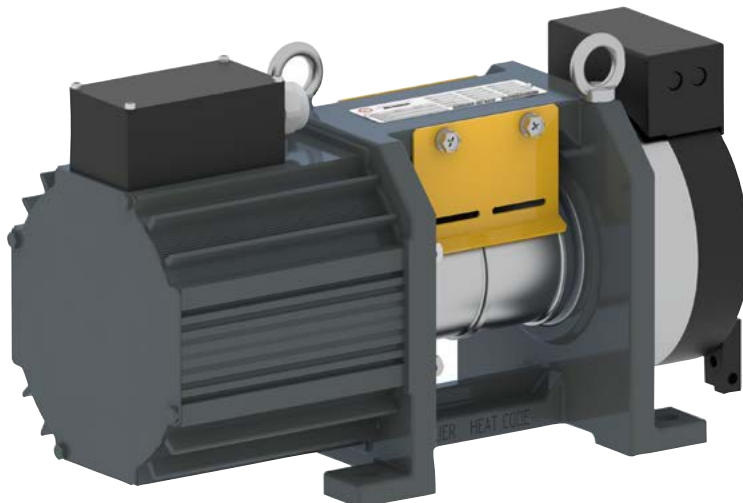
**MDG45 - FG**



**MDG63**



**MDG100**



主轴静载  
**static load**  
2000 kg

最大载重  
**load**  
450 kg

最大速度  
**speed**  
up to 1 m/s

曳引轮  
**sheave**  
85 - 100 mm

自重  
**weight**  
90 kg

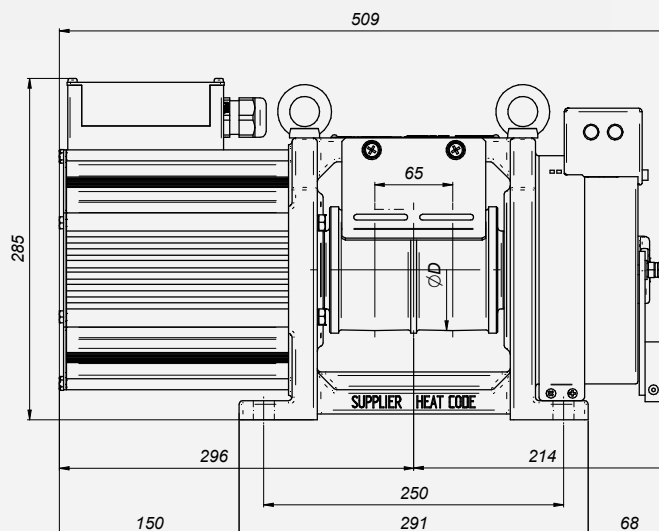
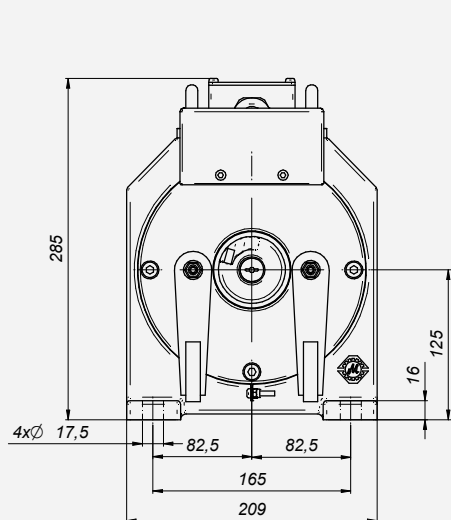
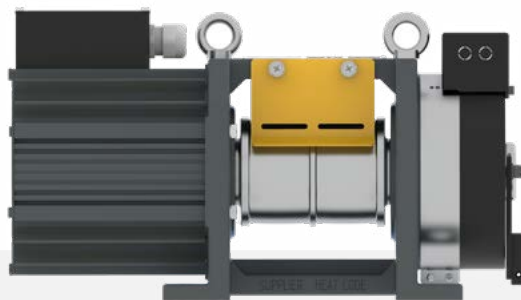
额定扭矩 <b>Nominal Torque</b>	极数 <b>Poles</b>	编码器 <b>Encoder</b>	钢带轮 <b>Belt Pulley</b>		
			宽度 Width	钢带数 min - max	槽距 Pitch
<b>Nm</b>			mm	n°	mm
<b>74 S5 - 25% ED 180 s/h</b>	16	ERN1387 ECN1313 EI53C9.25 TS5213N2531	60 55	2	65
<b>制动器 Brake</b>					
EMFR DC110V/1.4A[2X125Nm] EMFS125 2XDC110V/2X0.76A[2X135N.m] CE Certified					

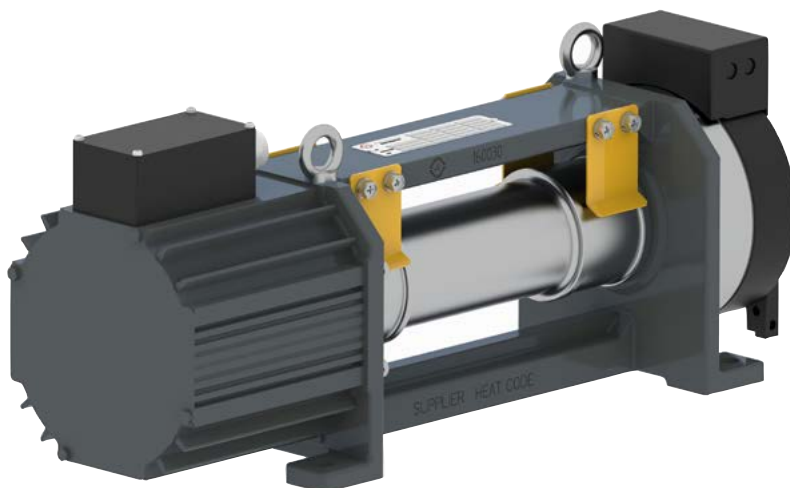
- 1 - 以上数据是以平衡系数为45%的基础上计算出来的理论数据  
1 - The values are obtained considering system balanced at the 45%
- 2 - 数据如有更改，恕不另行通知  
2 - Data are subject to change without prior notice

2:1	额定载重 Load	额定速度 Speed	曳引轮 Sheave				额定扭矩 Torque	额定功率 Power	额定转速 RPM	额定频率 Freq.	额定电流 Current 220V	额定电流 Current 380V
			Ø	宽度 Width	n°	槽距 Pitch						
	kg	m/s	mm	mm		mm	Nm	kW	RPM	Hz	A	A
320	0,40	0,40	100	60	2	65	51	0,81	153	20,4	5,1	3,3
								1,02	191	25,5	6,5	3,3
								1,28	241	32,1	7,1	3,3
								2,03	382	50,9	9,4	5,1
400	0,40	0,50	100	60	2	65	66	1,05	153	20,4	6,6	4,3
								1,32	191	25,5	6,6	4,3
								1,66	241	32,1	8,5	4,3
								2,63	382	50,9	12,2	6,6
450	0,40	0,63	100	60	2	65	71	1,14	153	20,4	7,1	4,5
								1,43	191	25,5	9,1	4,5
								1,80	241	32,1	9,1	4,5
								2,86	382	50,9	13,1	6,7

2:1	额定载重 Load	额定速度 Speed	曳引轮 Sheave				额定扭矩 Torque	额定功率 Power	额定转速 RPM	额定频率 Freq.	额定电流 Current 220V	额定电流 Current 380V
			Ø	宽度 Width	n°	槽距 Pitch						
	kg	m/s	mm	mm		mm	Nm	kW	RPM	Hz	A	A
320	0,40	0,40	85	55	2	65	43	0,81	180	24,0	5,6	2,7
								1,01	225	30,0	5,6	2,7
								1,28	283	37,7	8,0	4,3
								2,03	449	59,9		5,6
400	0,40	0,50	85	55	2	65	54	1,01	180	24,0	6,9	3,4
								1,27	225	30,0	6,9	3,4
								1,60	283	37,7	10,0	5,4
								2,54	449	59,9		6,9
450	0,40	0,63	85	55	2	65	61	1,14	180	24,0	7,8	3,9
								1,43	225	30,0	7,8	3,9
								1,80	283	37,7	11,2	6,1
								2,85	449	59,9		7,8





主轴静载  
**static load**  
2000 kg

最大载重  
**load**  
450 kg

最大速度  
**speed**  
up to 1 m/s

曳引轮  
**sheave**  
85 - 100 mm

自重  
**weight**  
95 kg

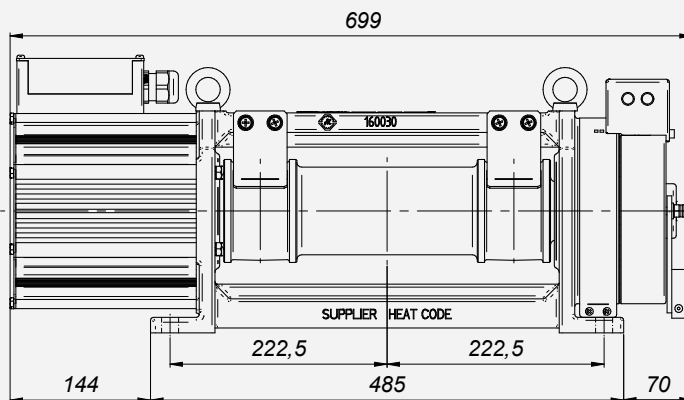
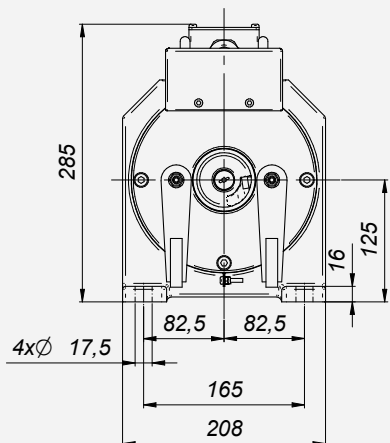
额定扭矩 <b>Nominal Torque</b>	极数 <b>Poles</b>	编码器 <b>Encoder</b>	钢带轮 <b>Belt Pulley</b>		
			宽度 Width	钢带数 min - max	槽距 Pitch
<b>Nm</b>			mm	n°	mm
<b>74 S5 - 25% ED 180 s/h</b>	16	ERN1387 ECN1313 EI53C9.25 TS5213N2531	60 55	2	260
<b>制动器 Brake</b>					
EMFR DC110V/1.4A[2X125Nm] EMFS125 2XDC110V/2X0.76A[2X135N.m] CE Certified					

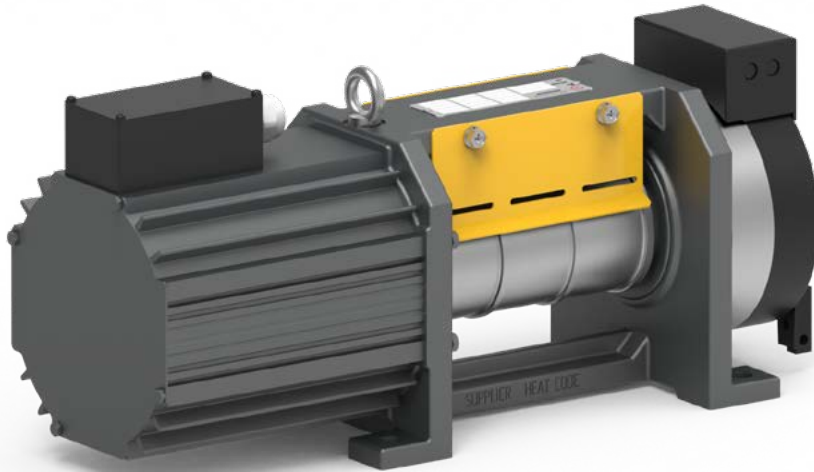
- 1 - 以上数据是以平衡系数为45%的基础上计算出来的理论数据  
1 - The values are obtained considering system balanced at the 45%  
2 - 数据如有更改，恕不另行通知  
2 - Data are subject to change without prior notice

2:1	额定载重 Load	额定速度 Speed	曳引轮 Sheave				额定扭矩 Torque	额定功率 Power	额定转速 RPM	额定频率 Freq.	额定电流 Current 220V	额定电流 Current 380V								
			∅	宽度 Width	n°	槽距 Pitch														
	kg	m/s	mm	mm		mm	Nm	kW	RPM	Hz	A	A								
320	320	0,40	100	60	2	260	51	0,81	153	20,4	5,1	3,3								
		0,50						1,02	191	25,5	6,5	3,3								
		0,63						1,28	241	32,1	7,1	3,3								
		1,00						2,03	382	50,9	9,4	5,1								
400	400	0,40					100	60	2	260	66	1,05	153	20,4	6,6	4,3				
		0,50										1,32	191	25,5	6,6	4,3				
		0,63										1,66	241	32,1	8,5	4,3				
		1,00										2,63	382	50,9	12,2	6,6				
450	450	0,40									100	60	2	260	71	1,14	153	20,4	7,1	4,5
		0,50														1,43	191	25,5	9,1	4,5
		0,63														1,80	241	32,1	9,1	4,5
		1,00														2,86	382	50,9	13,1	6,7

2:1	额定载重 Load	额定速度 Speed	曳引轮 Sheave				额定扭矩 Torque	额定功率 Power	额定转速 RPM	额定频率 Freq.	额定电流 Current 220V	额定电流 Current 380V								
			∅	宽度 Width	n°	槽距 Pitch														
	kg	m/s	mm	mm		mm	Nm	kW	RPM	Hz	A	A								
320	320	0,40	85	55	2	260	43	0,81	180	24,0	5,6	2,7								
		0,50						1,01	225	30,0	5,6	2,7								
		0,63						1,28	283	37,7	8,0	4,3								
		1,00						2,03	449	59,9	5,6	5,6								
400	400	0,40					85	55	2	260	54	1,01	180	24,0	6,9	3,4				
		0,50										1,27	225	30,0	6,9	3,4				
		0,63										1,60	283	37,7	10,0	5,4				
		1,00										2,54	449	59,9	6,9	6,9				
450	450	0,40									85	55	2	260	61	1,14	180	24,0	7,8	3,9
		0,50														1,43	225	30,0	7,8	3,9
		0,63														1,80	283	37,7	11,2	6,1
		1,00														2,85	449	59,9	7,8	7,8





主轴静载  
**static load**  
2000 kg

最大载重  
**load**  
630 kg

最大速度  
**speed**  
up to 1 m/s

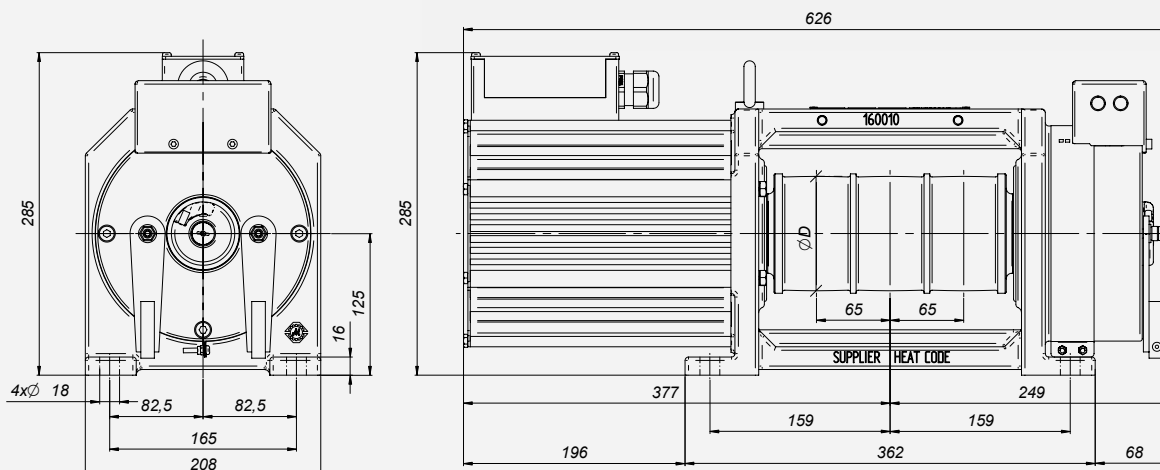
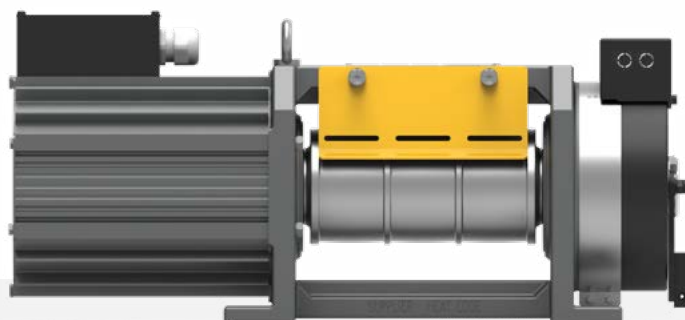
曳引轮  
**sheave**  
85 - 100 mm

自重  
**weight**  
120 kg

额定扭矩 <b>Nominal Torque</b>	极数 <b>Poles</b>	编码器 <b>Encoder</b>	钢带轮 <b>Belt Pulley</b>		
			宽度 Width	钢带数 min - max	槽距 Pitch
<b>Nm</b>			mm	n°	mm
<b>104 S5 - 40% ED 180 s/h</b>	16	ERN1387 ECN1313 EI53C9.25 TS5213N2531	60 55	3	65
<b>制动器  Brake</b>					
EMFR 1XDC110V/1X1.4A[2X125N.m] EMFS125 2XDC110V/2X0.76A[2X135N.m] CE Certified					

	额定载重 Load	额定速度 Speed	曳引轮 Traction sheave				额定扭矩 Torque	额定功率 Power	额定转速 RPM	额定频率 Freq.	额定电流 Current 220V	额定电流 Current 380V					
			∅	宽度 Width	n°	槽距 Pitch											
2:1	kg	m/s	mm	mm		mm	Nm	kW	RPM	Hz	A	A					
	630	0,40	100	60	3	65	104	1,60	153	20,4	8,7	5,0					
		0,50						2,00	191	25,5	11,9	7,0					
		0,63						2,61	241	32,1	16,9	7,0					
		1,00						4,00	382	50,9	16,9	8,7					
		0,40						85	55	3	65	88	1,66	180	24,0	7,0	6,0
		0,50											2,07	225	30,0	8,2	7,4
	0,63	2,61	283	37,7	14,4	7,4											
	1,00	4,15	449	59,9	18,1	9,3											
	1:1	kg	m/s	mm	mm		mm	Nm	kW	RPM	Hz	A	A				
		400	0,40	100	60	3	65	115	0,92	76	10,2	7,8	5,5				
			0,50						1,15	95	12,7	7,8	5,5				
			0,63						1,45	120	16,0	10,2	7,8				
			1,00						2,18	191	25,5	11,8	7,8				
0,40			85						55	3	65	108	1,02	90	12,0	7,3	5,2
0,50													1,27	112	15,0	7,3	5,2
0,63		1,60		142	18,9	9,5	7,3										
1,00		2,54		225	30,0	11,0	7,3										

1 - 以上数据是以平衡系数为45%的基础上计算出来的理论数据  
 1 - The values are obtained considering system balanced at the 45%  
 2 - 数据如有更改，恕不另行通知  
 2 - Data are subject to change without prior notice





主轴静载  
**static load**  
2100 kg

最大载重  
**load**  
1000 kg

最大速度  
**speed**  
up to 1 m/s

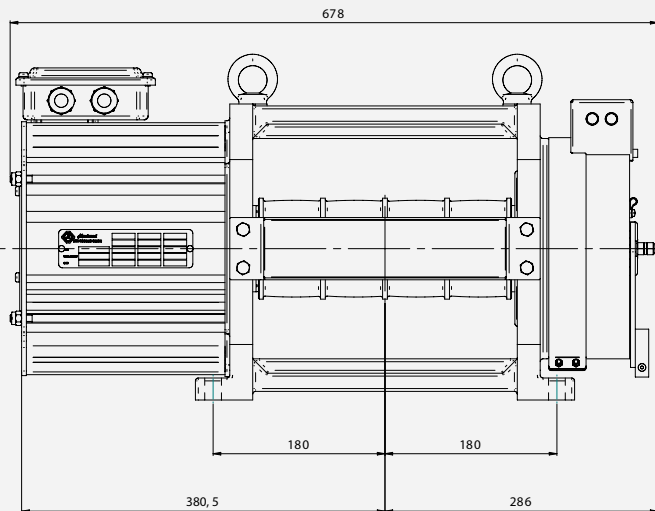
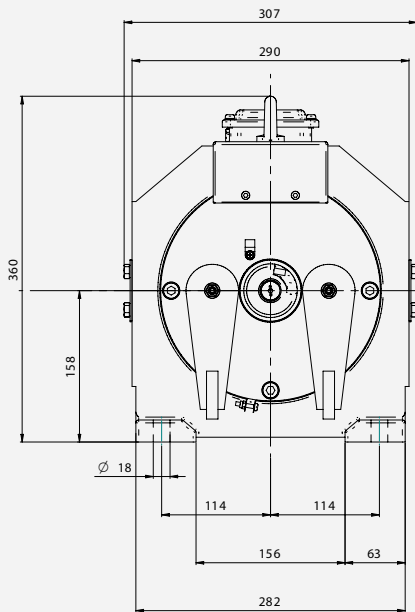
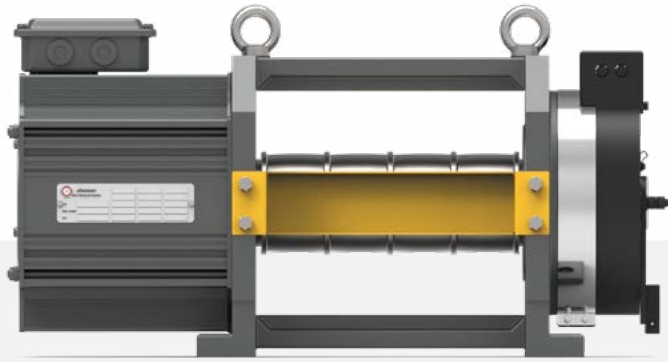
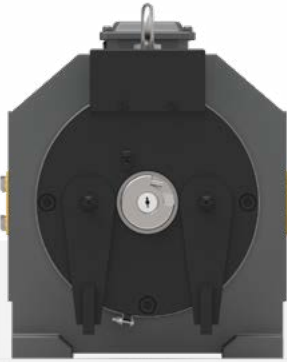
曳引轮  
**sheave**  
100 mm

自重  
**weight**  
140 kg

额定扭矩 <b>Nominal Torque</b>	极数 <b>Poles</b>	编码器 <b>Encoder</b>	钢带轮 <b>Belt Pulley</b>		
			宽度 Width	钢带数 min - max	槽距 Pitch
<b>Nm</b>			mm	n°	mm
<b>164 S5 - 40% ED 180 s/h</b>	16	ERN1387 ECN1313 EI53C9.25 TS5213N2531	60	4	65
<b>制动器 Brake</b>					
EMFR DC110V/1.9A[2X200Nm]					

2:1	额定载重 Load	额定速度 Speed	曳引轮 Traction sheave				额定扭矩 Torque	额定功率 Power	额定转速 RPM	额定频率 Freq.	额定电流 Current 220V	额定电流 Current 380V				
			Ø	宽度 Width	n°	槽距 Pitch										
	kg	m/s	mm	mm		mm	Nm	kW	RPM	Hz	A	A				
800		0,4	100	60	4	65	127	2,03	153	20,4	9,3	5,9				
		0,5						2,54	191	25,5	14,7	7,4				
		1,0						5,08	382	50,9	19,3	9,3				
1000		0,4					100	60	4	65	159	2,54	153	20,4	11,6	6,8
		0,5										3,17	191	25,5	18,4	9,2
		1,0										6,35	382	50,9	24,3	11,6

- 1 - 以上数据是以平衡系数为45%的基础上计算出来的理论数据  
 1 - The values are obtained considering system balanced at the 45%  
 2 - 数据如有更改，恕不另行通知  
 2 - Data are subject to change without prior notice



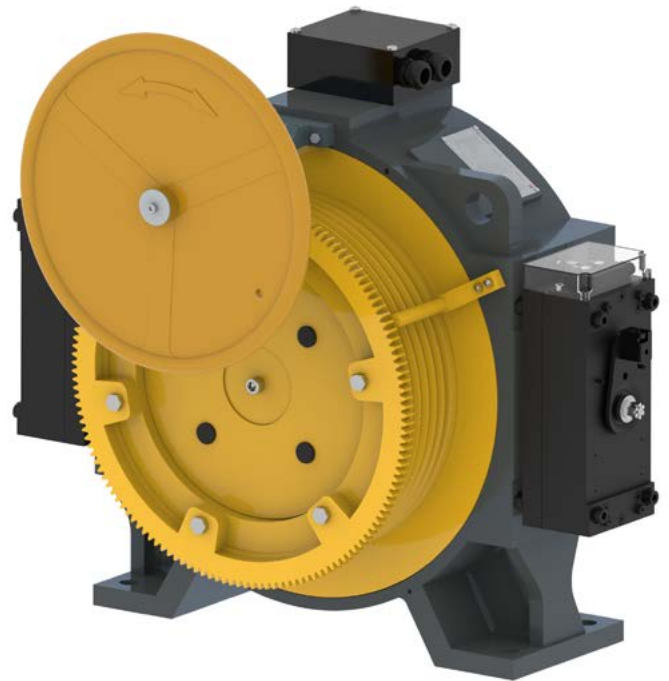


**Montanari**  
DRIVE TECHNOLOGY

# MF 系列 SERIES

扁平式无齿轮曳引机  
适用于有机房-无机房电梯

**THE FLAT GEARLESS  
RANGE FOR MR - MRL  
INSTALLATIONS**



6个型号-高度客户定制化  
6 MODELS - HIGHLY CUSTOMIZABLE



**MF200**



**MF201**



**MF300**



**MF450**



**MF600**



**MF800**

主轴静载 STATIC LOAD	额定载重 LOAD	额定速度 SPEED	曳引比 ROPING	曳引轮 SHEAVES
2.000 - 8.000 kg	320 - 2.500 kg	1 - 2.5 m/s	1:1 - 2:1	320 - 400 - 450 - 480 - 520 - 550 mm

# 系列概览。

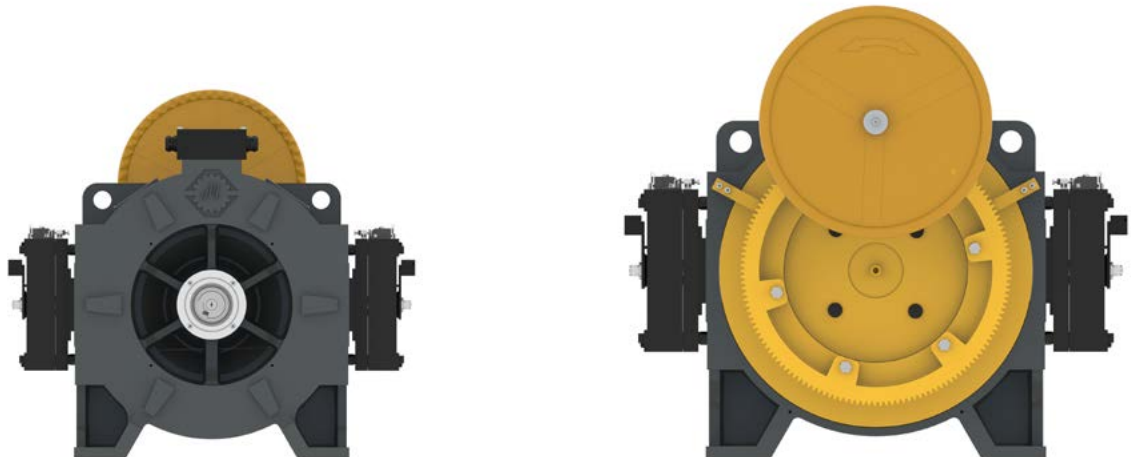
## TECHNICAL OVERVIEW

曳引轮 PULLEY DIAMETER		载重 - LOAD											
		320 kg	450 kg	550 kg	630 kg	680 kg	800 kg	1000 kg	1250 kg	1350 kg	1600 kg	2000kg	2500kg
mm	400	MF201											
			MF300										
	450			MF450									
							MF600						
	480			MF450									
							MF600						
520									MF800				
550						MF600							

曳引轮 PULLEY DIAMETER		载重 - LOAD											
		320 kg	450 kg	550 kg	630 kg	680 kg	800 kg	1000 kg	1250 kg	1350 kg	1600 kg	2000kg	2500kg
mm	320			MF200									
	400				MF201								
							MF300						
	450								MF450				
											MF600		
	480									MF450			
520												MF800	
550										MF600			

您在电梯改造及新电梯项目中的紧凑、  
高效且可靠的解决方案。

**YOUR COMPACT, EFFICIENT AND RELIABLE  
SOLUTION FOR MODS AND NEW ELEVATORS**





主轴静载  
**static load**  
2000 kg

最大载重  
**load**  
up to 630 kg

最大速度  
**speed**  
up to 1,75 m/s

曳引轮  
**sheave**  
320 mm

自重  
**weight**  
200 kg

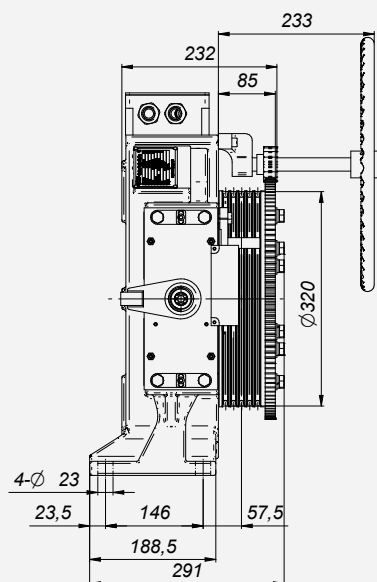
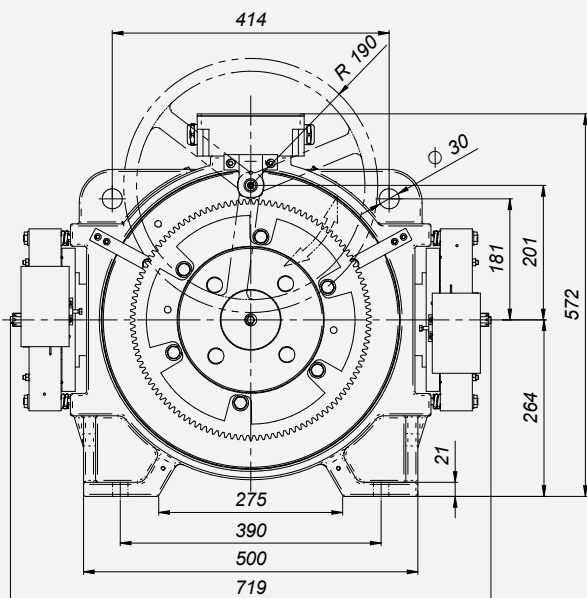
额定扭矩 <b>Nominal Torque</b>	极数 <b>Poles</b>	编码器 <b>Encoder</b>	编码器线 <b>Encoder Cable</b>	绝缘等级 <b>Insulation Class</b>	可选项 <b>Optional</b>
<b>300 Nm</b> S5 - 40% ED	30	Haidenhain1387	7m	F	Motor power cable 7m
<b>制动器</b> <b>Brake</b>					
DZD2-5000 2×400Nm-2×102W 2×0.95A-DC110V					

1 - 数据如有更改，恕不另行通知  
1 - Data are subject to change without prior notice

2:1	额定载重 Load	额定速度 Speed	额定扭矩 Torque	电机 Motor					曳引轮 Sheave				代码 CODE	
				额定功率 Power	额定转速 RPM	额定频率 Freq.	额定电流 Current	额定电压 Voltage	Ø	绳槽 Rope*	切口角 Angle*	槽距 Pitch		
				kg	m/s	Nm	kW	RPM	Hz	A	V	mm		n°
MF200	450	1.0	221	2.7	119	29.75	7.7	380	320	5xØ8	95°	35°	12	MF20045023201340
		1.5		4.1	179	44.75	11.0							MF20045023201.5340
		1.75		4.8	209	52.25	13.2							MF20045023201.75340
	550	1.0	270	3.4	119	29.75	8.9							MF20055023201340
		1.5		5.1	179	44.75	13.4							MF20055023201.5340
		1.75		5.9	209	52.25	15.6							MF20055023201.75340
	630	1.0	300	3.7	119	29.75	10.0							MF20063023201340
		1.5		5.6	179	44.75	15.0							MF20063023201.5340
		1.75		6.6	209	52.25	17.5							MF20063023201.75340

曳引轮绳槽数量和切口角可根据客户需求定制  
\* Rope groove number, β and γ angles can be customized upon request

	代码 - Code	配件 - Accessories
无机房 MRL	ACMF000014	远程松闸装置-7米松闸线 Remote Manual Release - 7 m wire
	ACMF000015	远程松闸装置-10米松闸线 Remote Manual Release - 10 m wire





主轴静载  
**static load**  
3000 kg

最大载重  
**load**  
up to 680 kg

最大速度  
**speed**  
up to 2 m/s

曳引轮  
**sheave**  
400 mm

自重  
**weight**  
295 kg

额定扭矩 <b>Nominal Torque</b>	极数 <b>Poles</b>	编码器 <b>Encoder</b>	编码器线 <b>Encoder Cable</b>	绝缘等级 <b>Insulation Class</b>	可选项 <b>Optional</b>
<b>450 Nm</b> S5 - 40% ED	32	Haidenhain1387	7m	F	Motor power cable 7m
<b>制动器</b> <b>Brake</b>					
DZD1-500 2×922Nm-2×127W 2×1.15A-DC110V					

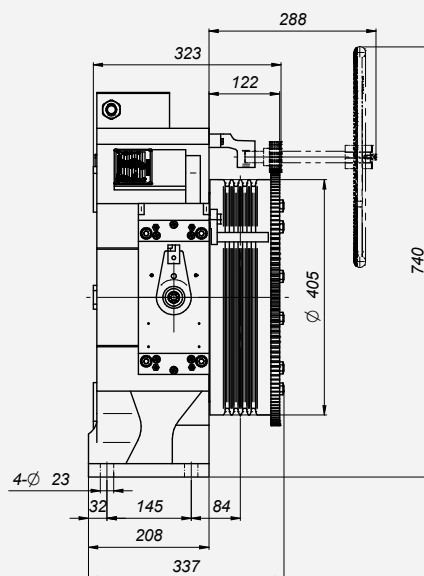
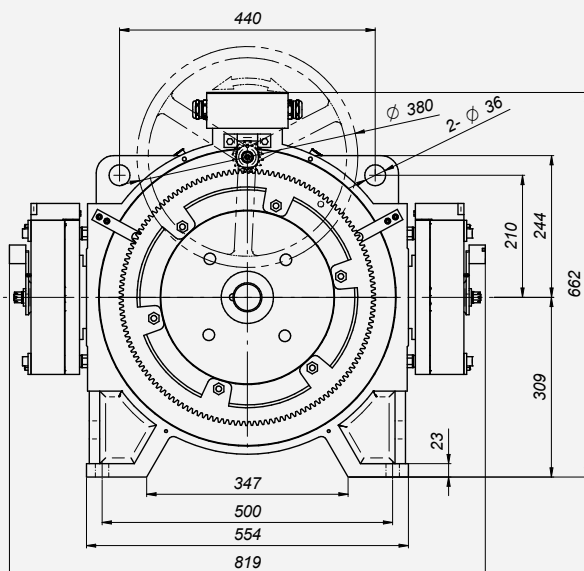
	代码 - Code	配件 - Accessories
无机房 MRL	ACMF00008	远程松闸装置-7米松闸线 Remote Manual Release - 7 m wire
	ACMF00011	远程松闸装置-10米松闸线 Remote Manual Release - 10 m wire

1:1	额定载重 Load	额定速度 Speed	额定扭矩 Torque	电机 Motor					曳引轮 Sheave				代码 CODE	
				额定功率 Power	额定转速 RPM	额定频率 Freq.	额定电流 Current	额定电压 Voltage	Ø	绳槽 Rope*	切口角 Angle*			槽距 Pitch
	kg	m/s	Nm	kW	RPM	Hz	A	V	mm	n°	β	γ	mm	
MF201	320	1.0	421	2.1	48	12.73	5.2	380	400	4xØ10	95°	35°	16	MF20132014001380
		1.5		3.2	72	19.10	7.5							MF20132014001.5340
		1.75		3.7	84	22.28	8.3							MF20132014001.75340
		2.0		4.2	96	25.47	9.4							MF20132014002340

2:1	额定载重 Load	额定速度 Speed	额定扭矩 Torque	电机 Motor					曳引轮 Sheave				代码 CODE	
				额定功率 Power	额定转速 RPM	额定频率 Freq.	额定电流 Current	额定电压 Voltage	Ø	绳槽 Rope*	切口角 Angle*			槽距 Pitch
	kg	m/s	Nm	kW	RPM	Hz	A	V	mm	n°	β	γ	mm	
MF201	450	1.0	296	2.9	95	25.46	6.5	380	400	4xØ10	95°	35°	16	MF20145024001340
		1.5		4.4	143	38.20	9.8							MF20145024001.5340
		1.75		5.2	167	44.56	11.6							MF20145024001.75340
		2.0		5.9	191	50.93	13.2							MF20145024002340
	630	1.0	414	4.1	95	25.46	10.0							MF20163024001340
		1.5		6.2	143	38.20	14.0							MF20163024001.5340
		1.75		7.3	167	44.56	16.5							MF20163024001.75340
		2.0		8.3	191	50.93	18.6							MF20163024002340
	680	1.0	447	4.5	95	25.46	10.8							MF20168024001340
		1.5		6.7	143	38.20	15.0							MF20168024001.5340
		1.75		7.8	167	44.56	17.5							MF20168024001.75340
		2.0		8.9	191	50.93	20.0							MF20168024002340

1 - 数据如有更改，恕不另行通知  
1 - Data are subject to change without prior notice

曳引轮绳槽数量和切口角可根据客户需求定制  
\* Rope groove number, β and γ angles can be customized upon request





主轴静载  
**static load**  
3000 kg

最大载重  
**load**  
up to 1000 kg

最大速度  
**speed**  
up to 2 m/s

曳引轮  
**sheave**  
400 mm

自重  
**weight**  
305 kg

额定扭矩 <b>Nominal Torque</b>	极数 <b>Poles</b>	编码器 <b>Encoder</b>	编码器线 <b>Encoder Cable</b>	绝缘等级 <b>Insulation Class</b>	可选项 <b>Optional</b>
<b>670 Nm</b> S5 - 40% ED	32	Haidenhain1387	7m	F	Motor power cable 7m
<b>制动器</b> <b>Brake</b>					
DZD1-500 2×922Nm-2×127W 2×1.15A-DC110V					

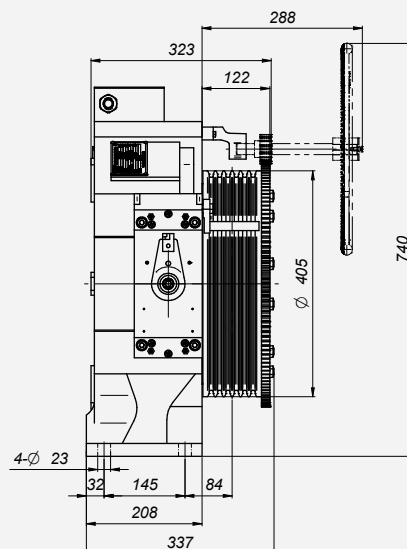
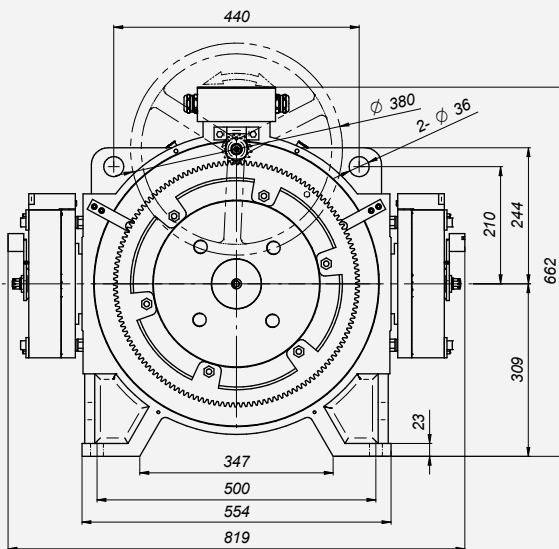
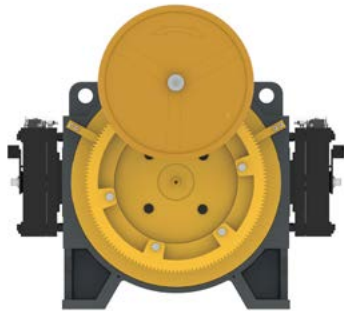
	代码 - Code	配件 - Accessories
无机房 MRL	ACMF00008	远程松闸装置-7米松闸线 Remote Manual Release - 7 m wire
	ACMF00011	远程松闸装置-10米松闸线 Remote Manual Release - 10 m wire

1:1	额定载重 Load	额定速度 Speed	额定扭矩 Torque	电机 Motor					曳引轮 Sheave				代码 CODE	
				额定功率 Power	额定转速 RPM	额定频率 Freq.	额定电流 Current	额定电压 Voltage	Ø	绳槽 Rope*	切口角 Angle*			槽距 Pitch
	kg	m/s	Nm	kW	RPM	Hz	A	V	mm	n°	β	γ		mm
MF300	450	1.0	592	3.0	48	12.73	8.1	380	400	6xØ10	95°	35°	16	MF30045014001340
		1.5		4.5	72	19.10	10.8							MF30045014001.5340
		1.75		5.2	84	22.28	11.8							MF30045014001.75340
		2.0		5.9	95	25.46	13.7							MF30045014002340
	550	1.0	670	3.3	48	12.73	7.8							MF30055014001340
		1.5		5.0	72	19.10	11.7							MF30055014001.5340
		1.75		5.9	84	22.28	13.6							MF30055014001.75340
		2.0		6.7	95	25.46	15.6							MF30055014002340

2:1	额定载重 Load	额定速度 Speed	额定扭矩 Torque	电机 Motor					曳引轮 Sheave				代码 CODE	
				额定功率 Power	额定转速 RPM	额定频率 Freq.	额定电流 Current	额定电压 Voltage	Ø	绳槽 Rope*	切口角 Angle*			槽距 Pitch
	kg	m/s	Nm	kW	RPM	Hz	A	V	mm	n°	β	γ		mm
MF300	800	1.0	526	5.3	95	25.46	11.9	380	400	6xØ10	95°	35°	16	MF30080024001340
		1.5		7.9	143	38.20	17.8							MF30080024001.5340
		1.75		9.2	167	44.56	20.7							MF30080024001.75340
		2.0		10.5	191	50.93	23.7							MF30080024002340
	1000	1.0	657	6.6	95	25.46	15.4							MF300100024001340
		1.5		9.9	143	38.20	22.5							MF300100024001.5340
		1.75		11.5	167	44.56	26.0							MF300100024001.75340
		2.0		13.1	191	50.93	30.5							MF300100024002340

1 - 数据如有更改，恕不另行通知  
1 - Data are subject to change without prior notice

\* 曳引轮绳槽数量和切口角可根据客户需求定制  
\* Rope groove number, β and γ angles can be customized upon request





主轴静载  
**static load**  
4500 kg

最大载重  
**load**  
up to 1350 kg

最大速度  
**speed**  
up to 2,5 m/s

曳引轮  
**sheave**  
450 - 480 mm

自重  
**weight**  
up to 510 kg

额定扭矩 <b>Nominal Torque</b>	极数 <b>Poles</b>	编码器 <b>Encoder</b>	编码器线 <b>Encoder Cable</b>	绝缘等级 <b>Insulation Class</b>	可选项 <b>Optional</b>
<b>670 Nm</b> S5 - 40% ED	32	Haidenhain1387	7m	F	Motor power cable 7m
<b>制动器</b> <b>Brake</b>					
DZD1-653 2x1270Nm-2x127W 2x1.15A-DC110V					

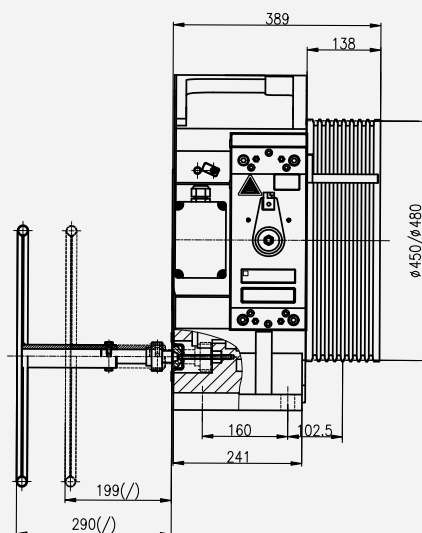
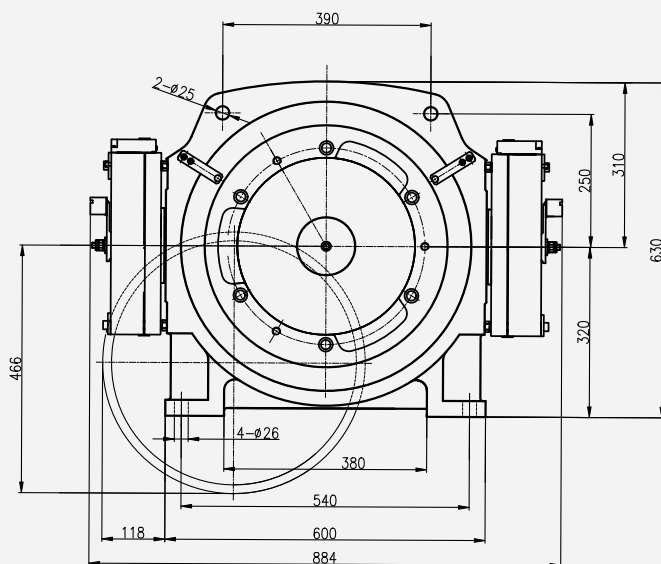
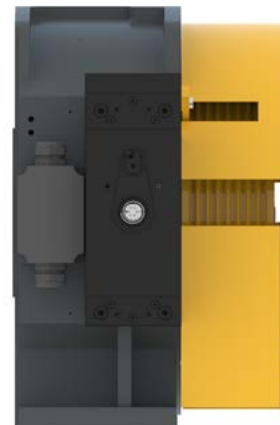
1:1	额定参数			电机 Motor					曳引轮 Sheave				代码 CODE	
	额定载重 Load	额定速度 Speed	额定扭矩 Torque	额定功率 Power	额定转速 RPM	额定频率 Freq.	额定电流 Current	额定电压 Voltage	Ø	绳槽 Rope*	切口角 Angle*			槽距 Pitch
	kg	m/s	Nm	kW	RPM	Hz	A	V	mm	n°	β	γ		mm
MF450	550	1.0	789	3.3	40	10.61	10.0	380	480	4xØ12	95°	35°	18	MF45055014801340
		1.5		4.9	60	15.92	13.0							MF45055014801.5340
		1.75		5.8	70	18.57	15.0							MF45055014801.75340
		2.0		6.6	80	21.22	17.0							MF45055014802340
	630	1.0	868	3.8	42	11.20	10.5		450	8xØ10	95°	35°	16	MF45063014501340
		1.5		5.8	64	17.07	14.3							MF45063014501.5340
		1.75		6.7	74	19.73	16.6							MF45063014501.75340
		2.0		7.7	85	22.67	19.0							MF45063014502340
		1.0	904	3.8	40	10.61	10.7		480	5xØ12	95°	35°	18	MF45063014801340
		1.5		5.6	60	15.92	13.9							MF45063014801.5340
		1.75		6.6	70	18.57	16.2							MF45063014801.75340
		2.0		7.5	80	21.22	18.5							MF45063014802340

2:1	额定参数			电机 Motor					曳引轮 Sheave				代码 CODE	
	额定载重 Load	额定速度 Speed	额定扭矩 Torque	额定功率 Power	额定转速 RPM	额定频率 Freq.	额定电流 Current	额定电压 Voltage	Ø	绳槽 Rope*	切口角 Angle*			槽距 Pitch
	kg	m/s	Nm	kW	RPM	Hz	A	V	mm	n°	β	γ		mm
MF450	1250	1.0	985	8.2	80	21.22	19.8	380	480	6xØ12	95°	35°	18	MF450125024801340
		1.5		12.3	119	31.83	29.1							MF450125024801.5340
		1.75		14.1	139	37.14	34.3							MF450125024801.75340
		2.0		16.4	159	42.44	39.0							MF450125024802340
		2.5		20.5	199	53.05	48.9							MF450125024802.5340
	1350	1.0	1065	8.9	80	21.22	21.3		450	7xØ12	95°	35°	16	MF450135024801340
		1.5		13.3	119	31.83	31.7							MF450135024801.5340
		1.75		15.5	139	37.14	36.9							MF450135024801.75340
		2.0		17.7	159	42.44	42.1							MF450135024802340
		2.5		22.2	199	53.05	53.0							MF450135024802.5340
	1250	1.0	924	8.2	85	22.67	19.0		450	8xØ10	95°	35°	16	MF450125024501340
		1.5		12.3	127	33.87	28.0							MF450125024501.5340
		1.75		14.4	149	39.73	33.0							MF450125024501.75340
		2.0		16.4	170	45.33	37.5							MF450125024502340
		2.5		20.5	212	56.53	47.0							MF450125024502.5340
	1350	1.0	998	8.9	85	22.67	20.5		450	8xØ10	95°	35°	16	MF450135024501340
		1.5		13.3	127	33.87	30.5							MF450135024501.5340
		1.75		15.5	149	39.73	35.5							MF450135024501.75340
		2.0		17.7	170	45.33	40.5							MF450135024502340
		2.5		22.2	212	56.53	51.0							MF450135024502.5340

1 - 数据如有更改，恕不另行通知  
1 - Data are subject to change without prior notice

曳引轮绳槽数量和切口角可根据客户需求定制  
\* Rope groove number, β and γ angles can be customized upon request

	代码 - Code	配件 - Accessories
无机房 MRL	ACMF000010	远程松闸装置-7米松闸线 Remote Manual Release - 7 m wire
	ACMF000013	远程松闸装置-10米松闸线 Remote Manual Release - 10 m wire



(/) Means without flywheel



# MF600

扁平式无齿轮  
曳引机  
FLAT  
GEARLESS



主轴静载  
**static load**  
6000 kg

最大载重  
**load**  
up to 1600 kg

最大速度  
**speed**  
up to 2,5 m/s

曳引轮  
**sheave**  
450 - 480 - 550 mm

自重  
**weight**  
up to 720 kg

额定扭矩 <b>Nominal Torque</b>	极数 <b>Poles</b>	编码器 <b>Encoder</b>	编码器线 <b>Encoder Cable</b>	绝缘等级 <b>Insulation Class</b>	可选项 <b>Optional</b>
<b>1470 Nm</b> S5 - 40% ED	32	Haidenhain1387	7m	F	Motor power cable 7m
<b>制动器</b> <b>Brake</b>					
DZD1-653 2X1550Nm-2x127W 2x1.15A-DC110V  DZD1-653 2X1838Nm-2x127W 2x1.15A-DC110V					

1:1	电机Motor			曳引轮 Sheave										代码 CODE
	额定载重 Load	额定速度 Speed	额定扭矩 Torque	额定功率 Power	额定转速 RPM	额定频率 Freq.	额定电流 Current	额定电压 Voltage	Ø	绳槽 Rope*	切口角 Angle*		槽距 Pitch	
	kg	m/s	Nm	kW	RPM	Hz	A	V	mm	n°	β	γ	mm	
MF600	800	1.0	1176	5.2	42	11.32	11.0	380	450	8xØ10	95°	35°	16	MF60080014501340
		1.5		7.8	64	16.98	16.5							MF60080014501.5340
		1.75		9.1	74	19.81	19.0							MF60080014501.75340
		2.0		10.5	85	22.64	21.8							MF60080014502340
		1.0	1254	5.2	40	10.67	11.3		480	7xØ12	18	MF60080014801340		
		1.5		7.8	60	16.00	17.0					MF60080014801.5340		
		1.75		9.1	70	18.67	19.6					MF60080014801.75340		
		2.0		10.5	80	21.33	22.5					MF60080014802340		
		1.0	1437	5.2	35	9.33	11.3		550	6xØ13	20	MF60080015501340		
		1.5		7.8	52	13.87	17.0					MF60080015501.5340		
		1.75		9.1	61	16.27	19.6					MF60080015501.75340		
		2.0		10.5	69	18.40	22.4					MF60080015502340		
	1000	1378	1.0	1378	6.1	42	11.32	14.0	450	9xØ10	16	MF600100014501340		
			1.5		9.2	64	16.98	21.3				MF600100014501.5340		
			1.75		10.7	74	19.81	24.4				MF600100014501.75340		
			2.0		12.3	85	22.64	28.3				MF600100014502340		
		1.0	1434	6.0	40	10.61	13.9	480	7xØ12	18	MF600100014801340			
		1.5		9.0	60	15.92	21.0				MF600100014801.5340			
		1.75		10.5	70	18.57	24.2				MF600100014801.75340			
		2.0		12.0	80	21.22	28.1				MF600100014802340			

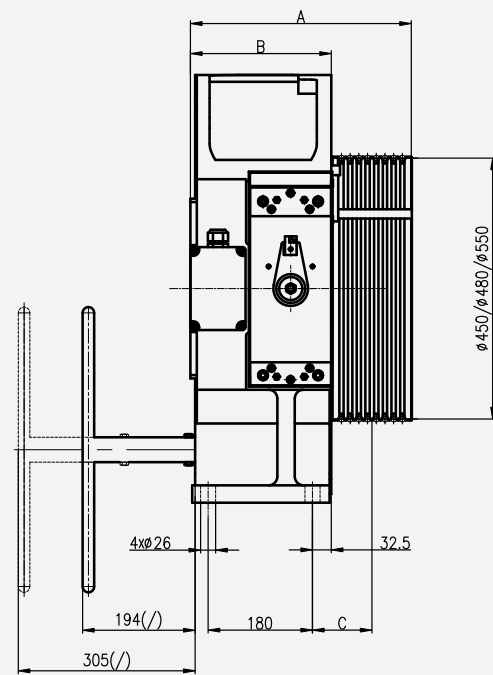
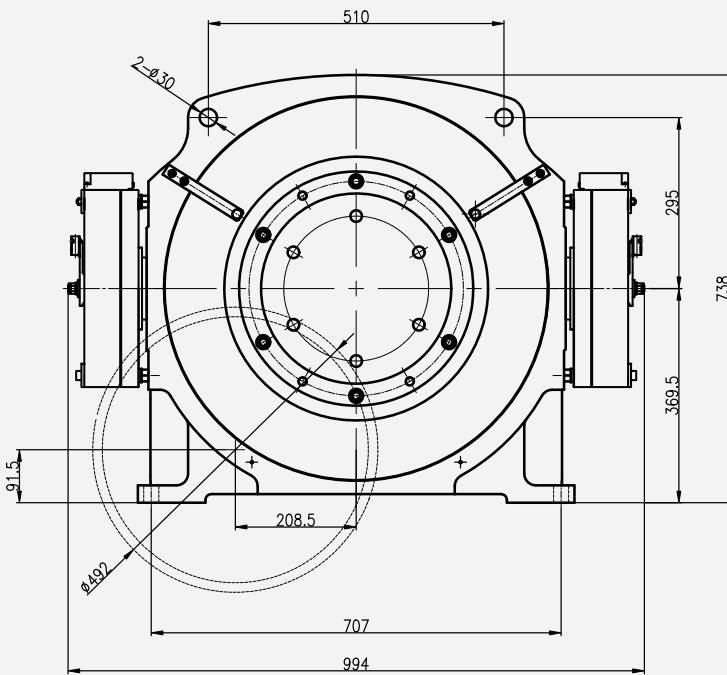
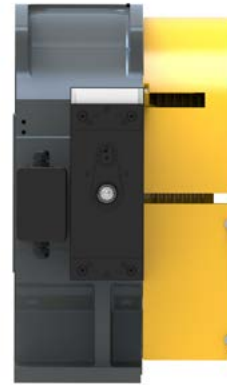
2:1	电机Motor			曳引轮 Sheave										代码 CODE
	额定载重 Load	额定速度 Speed	额定扭矩 Torque	额定功率 Power	额定转速 RPM	额定频率 Freq.	额定电流 Current	额定电压 Voltage	Ø	绳槽 Rope*	切口角 Angle*		槽距 Pitch	
	kg	m/s	Nm	kW	RPM	Hz	A	V	mm	n°	β	γ	mm	
MF600	1600	1.0	1176	10.5	85	22.67	23.0	380	450	8xØ10	95°	35°	16	MF600160024501340
		1.5		15.6	127	33.87	34.5							MF600160024501.5340
		1.75		18.4	149	39.73	39.0							MF600160024501.75340
		2.0		21.0	170	45.33	44.0							MF600160024502340
		2.5		26.1	212	56.53	55.0							MF600160024502.5340
		1.0	1470	13.1	85	22.67	29.5		9xØ10	MF600200024501340				
		1.5		19.5	127	33.87	45.0			MF600200024501.5340				
		1.75		23.0	149	39.73	48.5			MF600200024501.75340				
		2.0		26.3	170	45.33	60.0			MF600200024502340				
		2.5		32.4	212	56.53	71.5			MF600200024502.5340				
	1250	1.0	1123	8.2	69	18.40	19.0		550	6xØ13	20	MF600125025501340		
		1.5		12.3	104	27.73	28.0					MF600125025501.5340		
		1.75		14.3	122	32.53	30.5					MF600125025501.75340		
		2.0		16.3	139	37.07	39.8					MF600125025502340		
		2.5		20.4	174	46.40	42.5					MF600125025502.5340		
	1350	1.0	1213	8.8	69	18.40	20.4		550	6xØ13	20	MF600135025501340		
		1.5		13.3	104	27.73	31					MF600135025501.5340		
		1.75		15.4	122	32.53	33					MF600135025501.75340		
		2.0		17.6	139	37.07	39.8					MF600135025502340		
		2.5		22.1	174	46.40	46.2					MF600135025502.5340		
	1600	1.0	1437	10.5	69	18.40	23.1		550	6xØ13	20	MF600160025501340		
		1.5		15.8	104	27.73	34.4					MF600160025501.5340		
		1.75		18.4	122	32.53	39.6					MF600160025501.75340		
		2.0		21.0	139	37.07	46.0					MF600160025502340		
		2.5		26.3	174	46.40	55.9					MF600160025502.5340		

1 - 数据如有更改，恕不另行通知  
1 - Data are subject to change without prior notice

曳引轮绳槽数量和切口角可根据客户需求定制  
\* Rope groove number, β and γ angles can be customized upon request

	代码 - Code	配件 - Accessories
无机房 MRL	ACMF000010	远程松闸装置-7米松闸线 Remote Manual Release - 7 m wire
	ACMF000013	远程松闸装置-10米松闸线 Remote Manual Release - 10 m wire

MF600机器远程松闸装置只适用于以下工况 - Remote Manual Release in MF600 applicable to:  
 · 载重1600kg配450mm曳引轮或以下 Ø450mm pulley with 1600kg load or less.  
 · 载重1350kg配550mm曳引轮或以下 Ø550mm pulley with load 1350kg or less.  
 载重2000kg配450mm曳引轮和载重1600kg配550mm曳引轮不适用远程松闸装置  
 Ø450mm pulley with load 2000kg and Ø550mm pulley with load 1600kg can not use Manual Release Device.



(/) Means without flywheel

2:1				
Pulley Diameter	Load	Size A	Size B	Size C
Ø450	1600kg or less	382	243	102.5
Ø550	1600kg or less			
Ø450	2000kg	408	253	110.5

1:1				
Pulley Diameter	Load	Size A	Size B	Size C
Ø450	800kg	382	243	102.5
Ø480/Ø550	800kg	408	253	110.5
Ø450/Ø480	1000kg			





主轴静载  
**static load**  
8000 kg

最大载重  
**load**  
up to 2500 kg

最大速度  
**speed**  
up to 2,5 m/s

曳引轮  
**sheave**  
520 mm

自重  
**weight**  
1010 kg

额定扭矩 <b>Nominal Torque</b>	极数 <b>Poles</b>	编码器 <b>Encoder</b>	编码器线 <b>Encoder Cable</b>	绝缘等级 <b>Insulation Class</b>	可选项 <b>Optional</b>
<b>2200 Nm</b> S5 - 40% ED	32	Haidenhain1387	7m	F	Motor power cable 7m
<b>制动器</b> <b>Brake</b>					
DZD1-21800 2X2172Nm-2x197W 2x1.8A-DC110V		DZD1-25000 2X3188Nm-2x(540/135)W 2x(2.7/1.35)A-DC200/100V		DZD1-21800 2X2715Nm-2x197W 2x1.8A-DC110V	

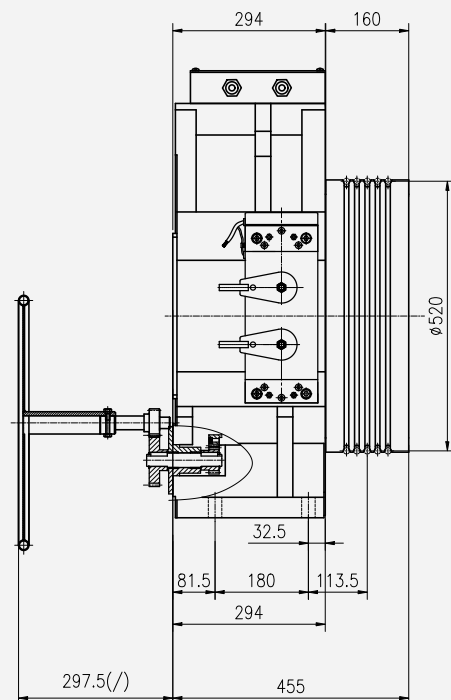
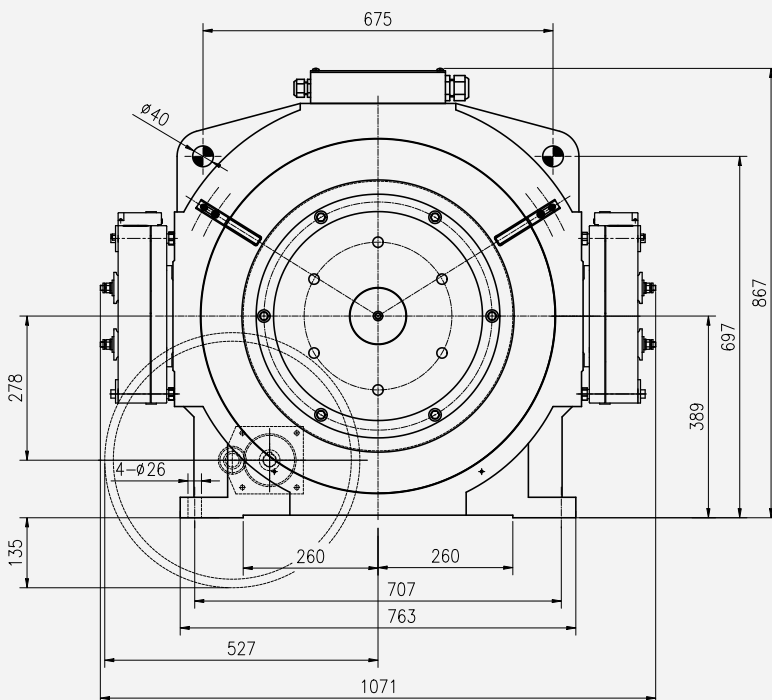
配件 - Accessories	
无机房 MRL	不适用 Not available for this model

1:1	电机Motor			曳引轮 Sheave				代码 CODE						
	额定载重 Load	额定速度 Speed	额定扭矩 Torque	额定功率 Power	额定转速 RPM	额定频率 Freq.	额定电流 Current		额定电压 Voltage	Ø	绳槽 Rope*	切口角 Angle*		槽距 Pitch
	kg	m/s	Nm	kW	RPM	Hz	A		V	mm	n°	β	γ	mm
MF800	1350	1.0	2097	8.1	37	9.79	19.6	380	520	7XØ13	95°	35°	20	MF800135015201340
		1.5		12.1	55	14.69	27.6							MF800135015201.5340
		1.75		14.1	64	17.14	32.5							MF800135015201.75340
		2.0		16.1	73	19.59	38.4							MF800135015202340

2:1	电机Motor			曳引轮 Sheave				代码 CODE						
	额定载重 Load	额定速度 Speed	额定扭矩 Torque	额定功率 Power	额定转速 RPM	额定频率 Freq.	额定电流 Current		额定电压 Voltage	Ø	绳槽 Rope*	切口角 Angle*		槽距 Pitch
	kg	m/s	Nm	kW	RPM	Hz	A		V	mm	n°	β	γ	mm
MF800	2000	1.0	1737	13.4	74	19.73	32.0	380	520	7xØ13	95°	35°	20	MF800200025201340
		1.5		20.0	110	29.38	44.0							MF800200025201.5340
		1.75		23.3	129	34.28	52.5							MF800200025201.75340
		2.0		26.7	147	39.18	62.5							MF800200025202340
		2.5		33.4	184	48.97	75.5							MF800200025202.5340
	2500	1.0	2172	16.7	74	19.73	35.0							MF800250025201340
		1.5		25.0	110	29.38	58.0							MF800250025201.5340
		1.75		29.2	129	34.28	66.0							MF800250025201.75340
		2.0		33.3	147	39.18	72.0							MF800250025202340
		2.5		41.8	184	48.97	94.0							MF800250025202.5340

1 - 数据如有更改，恕不另行通知  
1 - Data are subject to change without prior notice

\* 曳引轮绳槽数量和切口角可根据客户需求定制  
Rope groove number, β and γ angles can be customized upon request





*Montanari*  
DRIVE TECHNOLOGY

# 扶梯有齿曳引机 ESCALATOR GEARBOXES





耐用可靠的曳引机，  
为您的项目服务和助力。

**DURABLE  
AND RELIABLE  
TRACTION MACHINES.  
FOR YOUR BEST  
PROJECTS.**

MADE IN ITALY



# 技术参数

# TECHNICAL FEATURES

蒙塔纳锐制动系统 安全设计

Montanari braking system designed for safety.

位于变速箱和电机之间，固定在蜗杆上。

Positioned between the gearbox and the motor. Fixed on the worm shaft.

适合连续使用：散热良好的加强筋框架结构

标准尺寸的法兰和轴，兼容市场上所有的电机

输出轴便于安装标准链条用链轮

输出轴：右置或左置

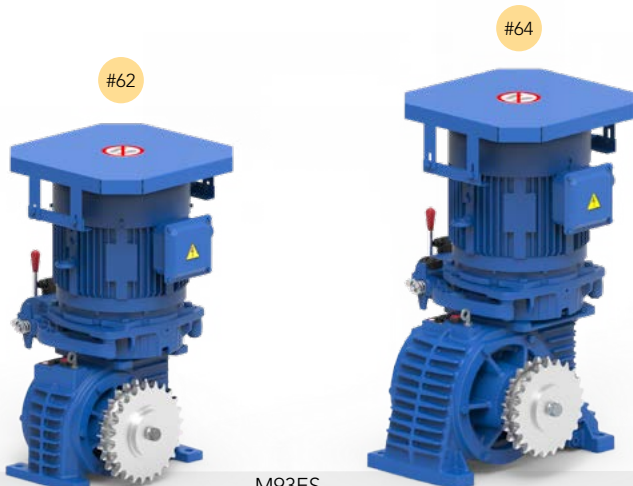
- Suitable for continuous use: ribbed frame that allows heat dissipation.
- Flange and shaft with standard dimensions, compatible with the motors on the market.
- Slow shaft easy to fit in pinions for standard chain.
- Output shaft: right or left.

## M73ES - M93ES:

扶梯曳引机安装了百货商场、购物中心、电影院、酒店等商业建筑内  
Traction machine for escalators installed in commercial buildings such as department stores, multi-storey shopping centers, multiplex cinemas, hotels etc..

超过 **80%** 标准效率齿轮箱

More than **80%** standard efficiency gearboxes



M73ES

M93ES

# ME165 - ME190:

公共交通型扶梯主机：地铁站、火车站、飞机场等

Traction machine for escalators dedicated to the public service such as metro stations, railway stations, airports etc..

超过 **90%** 高效齿轮箱

More than 90% high efficiency gearboxes.



ME165

ME190

## 额外选项

## OPTIONAL EXTRAS

制动器微动开关

Microswitch for brake control

链轮

Sprocket for chain

旋转传感器

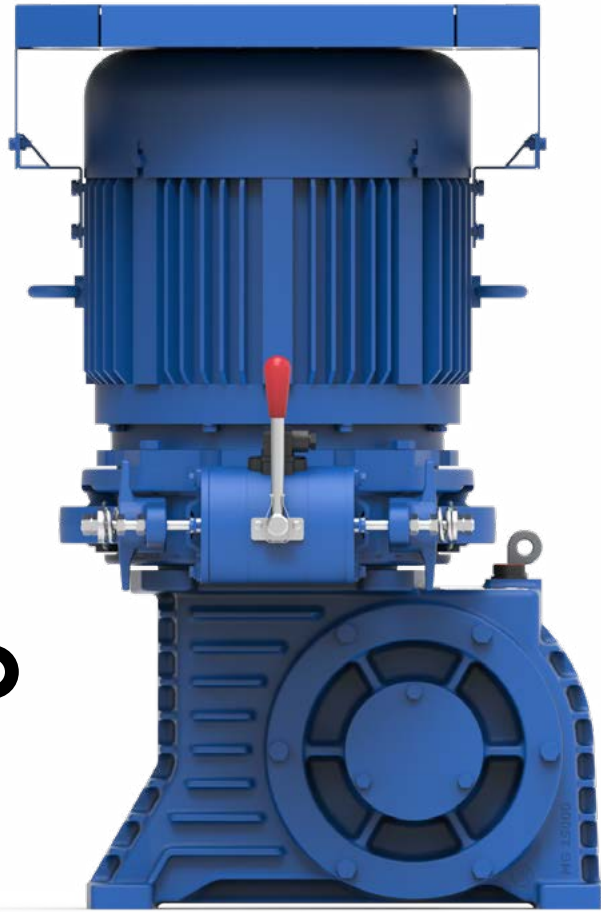
Rotation sensor

制动器磨损传感器

Brake wear sensor

用途：商业服务  
Use: commercial service

效率超过  
Efficiency more than  
**80%**



MADE IN ITALY



**抱闸系统 - BRAKE SYSTEM**

类型 - Type	启动/维持 V - Start / hold V
数据 - Data	207/104 V <sub>DC</sub> S1 1,12/0,56 A - 232/116 W - 185 OHM
Booster power board 230 V <sub>AC</sub>	

**备注 - NOTES**

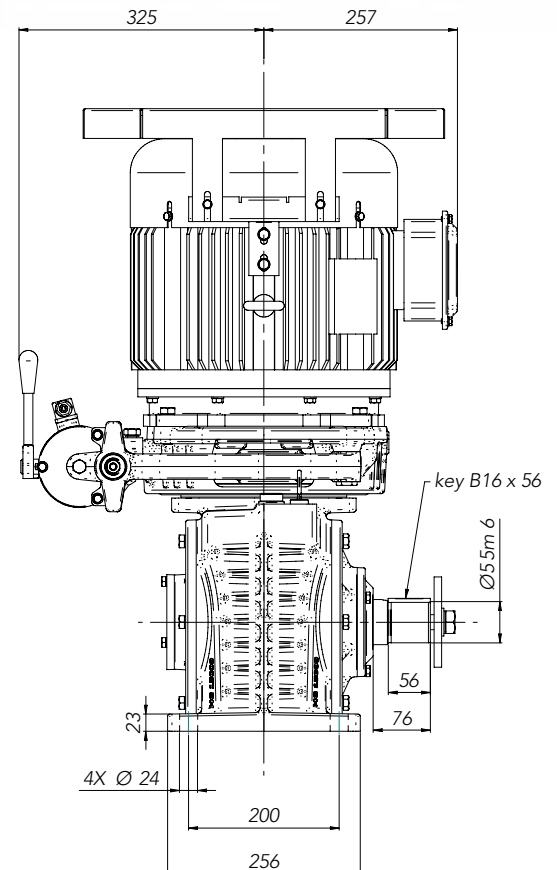
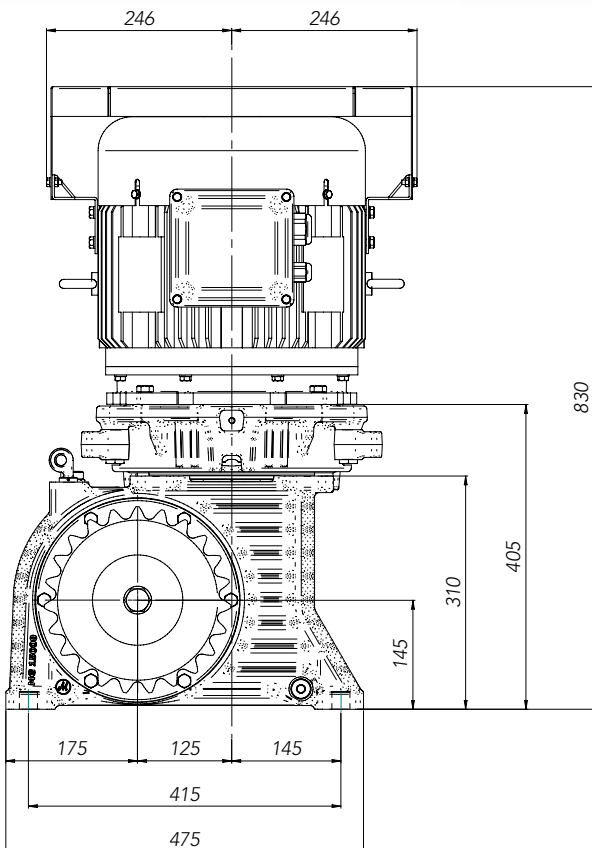
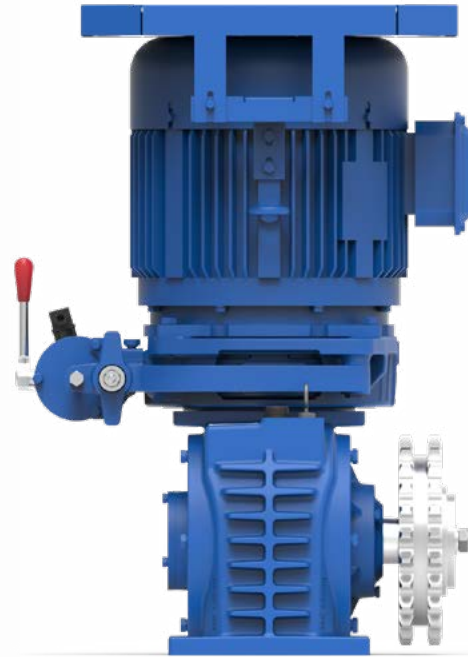
保护装置 - Protection:	IP55
环境温度 - Ambient temperature:	max 40 °C
合成油 - Synthetic oil:	ISO VG460
制动器 - Brake:	2 x 140 Nm

**选项 - OPTIONAL**

旋转传感器 - Rotation Sensor:	PNP or NPN
磨损传感器 - Worn Sensor:	24V DC 1A
制动器微动开关 - Brake Microswitch:	NO - NC AC15 2A / 250V DC13 0.25A / 250V

版本 Version	减速比 Ratio	输出速度 Output speed RPM	最大扭矩 Max torque Nm	功率 Power kW	效率 <sup>(1)</sup> Efficiency 满载 - Full load	重量 Weight kg
M73ES-5.5-6P	24.5	39.18	1099	5.5	<b>0.85</b>	285
M73ES-7.5-6P	24.5	39.18	1499	7.5	<b>0.85</b>	295

(1) 只有齿轮箱 - only gearbox

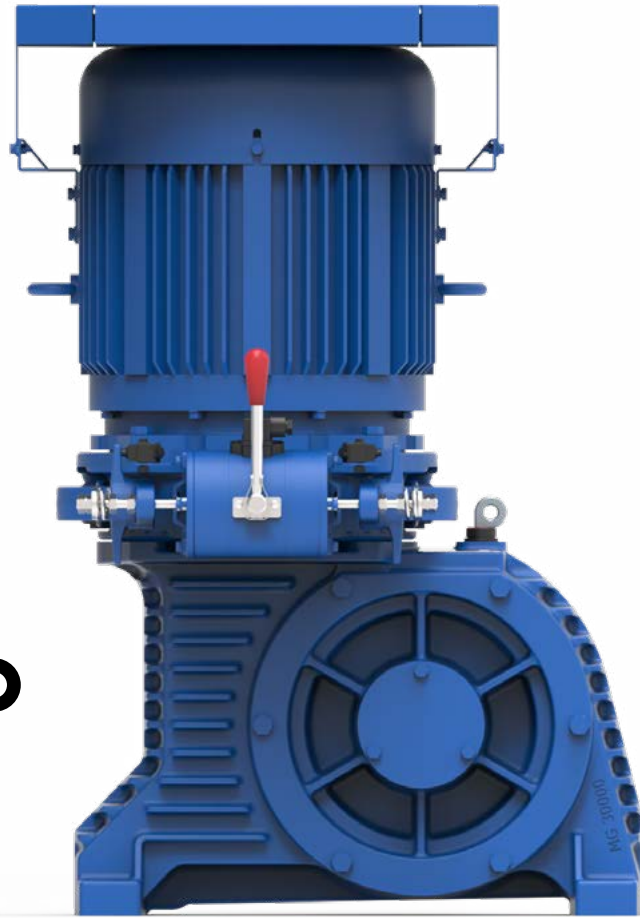


技术图纸-右置输出轴  
 Technical drawing with right output shaft.

用途：商业服务  
Use: commercial service

效率超过  
Efficiency more than

**80%**



MADE IN ITALY



**抱闸系统 - BRAKE SYSTEM**

类型 - Type	启动/维持 V - Start / hold V
数据 - Data	207/104 V <sub>DC</sub> S1 1,12/0,56 A - 232/116 W - 185 OHM
Booster power board 230 V <sub>AC</sub>	

**备注 - NOTES**

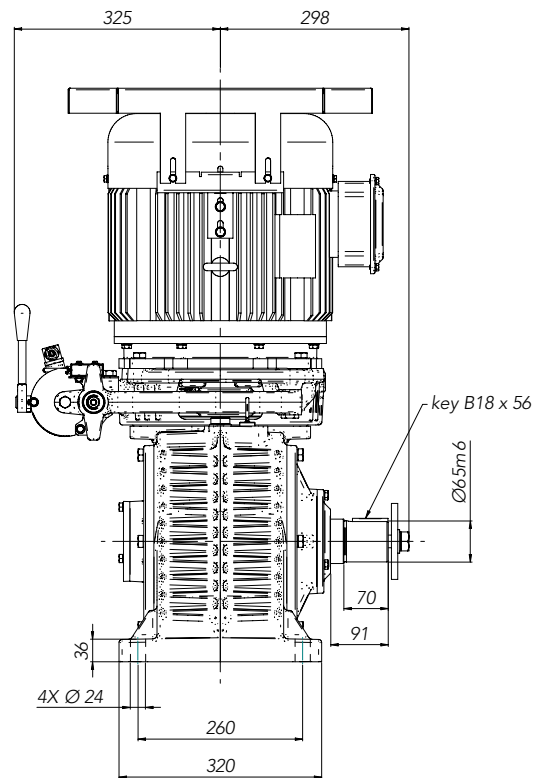
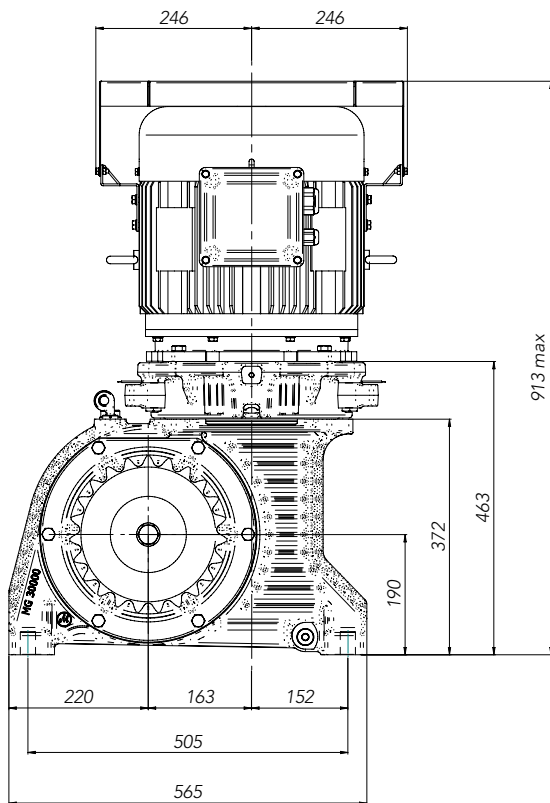
保护装置 - Protection:	IP55
环境温度 - Ambient temperature:	max 40 °C
合成油 - Synthetic oil:	ISO VG460
制动器 - Brake:	2 x 140 Nm

**选项 - OPTIONAL**

旋转传感器 - Rotation Sensor:	PNP or NPN
磨损传感器 - Worn Sensor:	24V DC 1A
制动器微动开关 - Brake Microswitch:	NO - NC AC15 2A / 250V DC13 0.25A / 250V

版本 Version	减速比 Ratio	输出速度 Output speed	最大扭矩 Max torque	功率 Power	效率 <sup>(1)</sup> Efficiency	重量 Weight
		RPM	Nm	kW	满载 - Full load	kg
M93ES-7.5-6P	24.5	39.18	1499	7.5	<b>0.85</b>	355
M93ES-11-6P	24.5	39.18	2198	11	<b>0.85</b>	390
M93ES-15-6P	24.5	39.18	2998	15	<b>0.85</b>	410

(1) s只有齿轮箱 - only gearbox

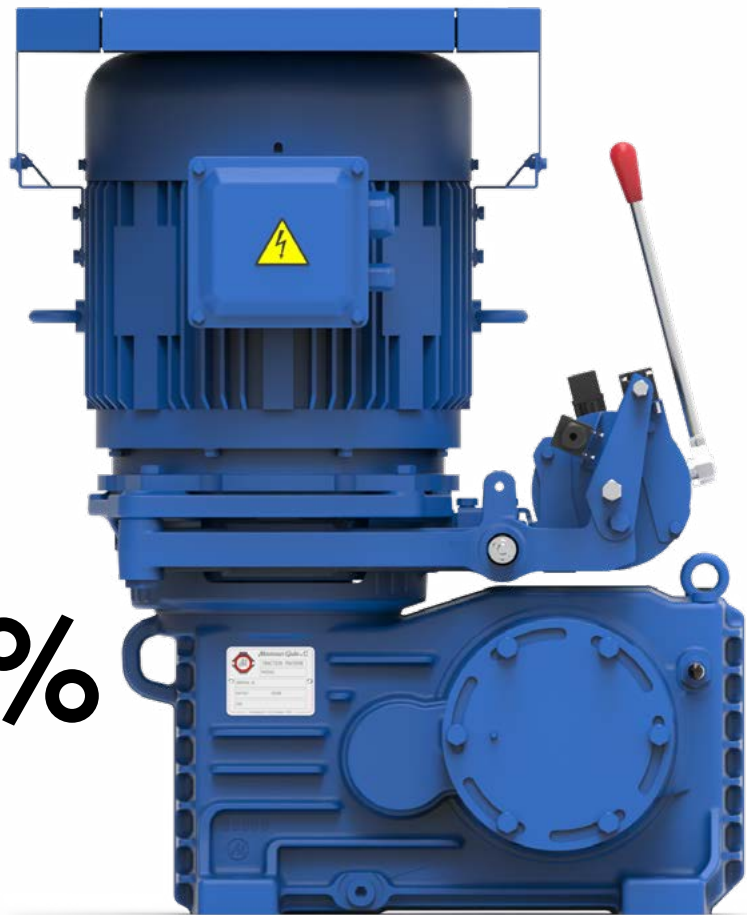


技术图纸-右置输出轴  
 Technical drawing with right output shaft

用途：公共服务  
Use: public service

效率超过  
Efficiency more than

# 90%



MADE IN ITALY



### 抱闸系统 - BRAKE SYSTEM

类型 - Type	启动/维持 V - Start / hold V
数据 - Data	207/104 VDC S1 1,78/0,89 A - 369/184 W - 116 OHM
<i>Booster power board 230 V<sub>AC</sub></i>	

### 备注 - NOTES

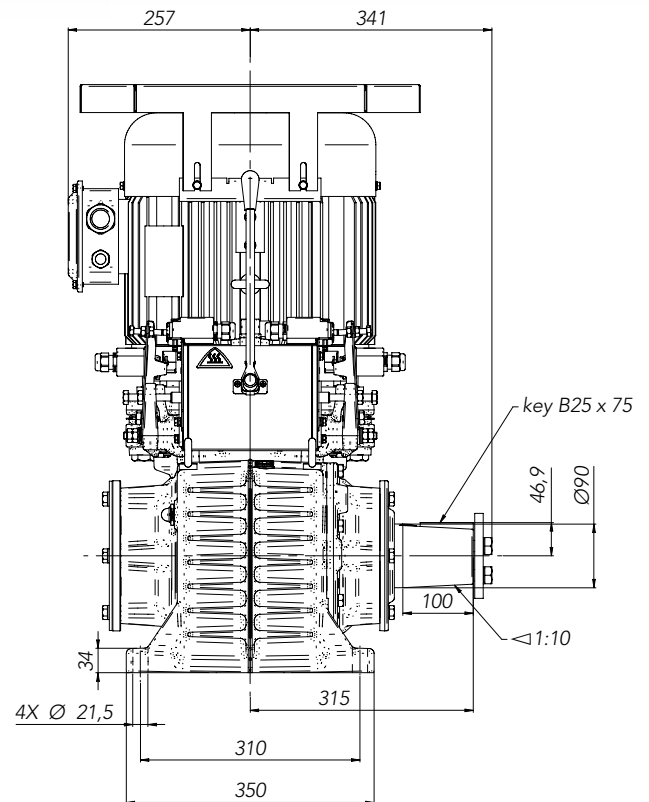
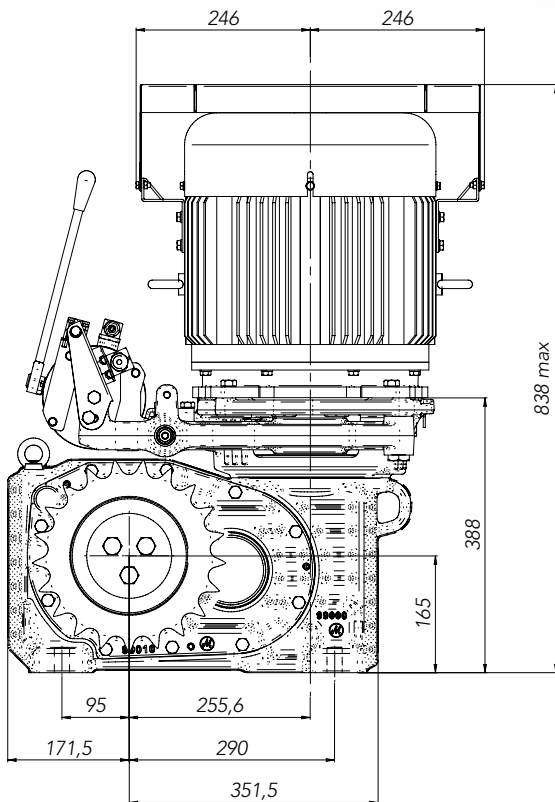
保护装置 - Protection:	IP55
环境温度 - Ambient temperature:	max 40 °C
合成油 - Synthetic oil:	ISO VG460
制动器 - Brake:	2 x 260 Nm

### 选项 - OPTIONAL

旋转传感器 - Rotation Sensor:	PNP or NPN
磨损传感器 - Worn Sensor:	24V DC 1A
制动器微动开关 - Brake Microswitch:	NO - NC AC15 2A / 250V DC13 0.25A / 250V

版本 Version	减速比 Ratio	输出速度 Output speed	最大扭矩 Max torque	功率 Power	效率 <sup>(1)</sup> Efficiency	重量 Weight
		RPM	Nm	kW	满载 - Full load	kg
ME165-26-7.5-6P	25.93	37.0	1760	7.5	<b>0.92</b>	385
ME165-19-7.5-6P	18.99	50.6	1310	7.5	<b>0.93</b>	
ME165-26-11-6P	25.93	37.0	2610	11	<b>0.92</b>	420
ME165-19-11-6P	18.99	50.6	1930	11	<b>0.93</b>	
ME165-26-15-6P	25.93	37.0	3550	15	<b>0.92</b>	445
ME165-19-15-6P	18.99	50.6	2630	15	<b>0.93</b>	

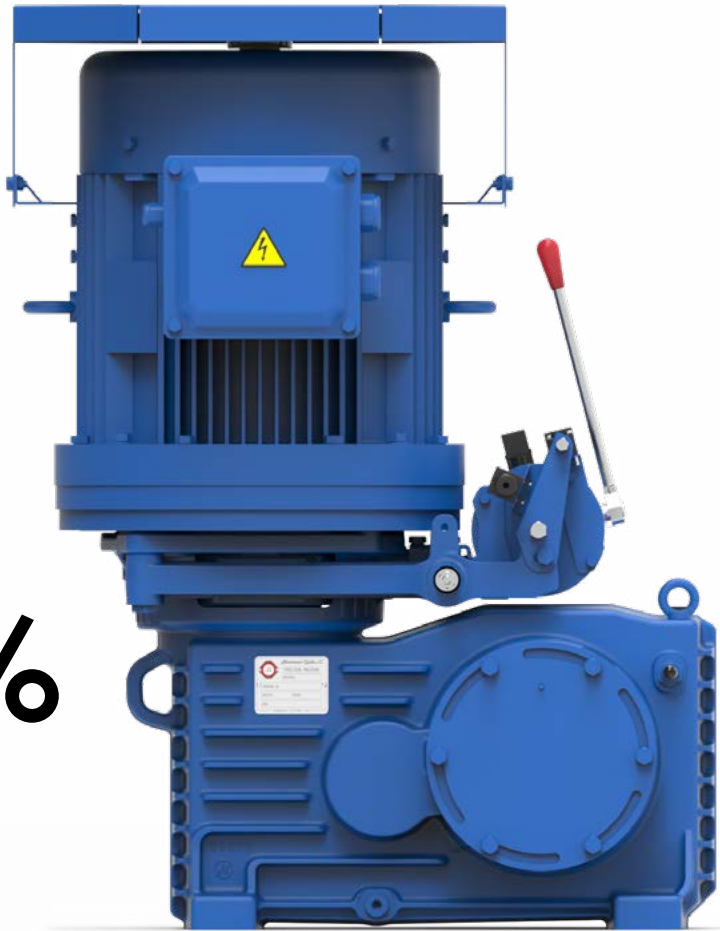
(1) 只有齿轮箱 - only gearbox


 技术图纸-右置输出轴  
 Technical drawing with right output shaft

用途：公共服务  
Use: public service

效率超过  
Efficiency more than

# 90%



MADE IN ITALY



### 抱闸系统 - BRAKE SYSTEM

类型 - Type	启动/维持 V - Start / hold V
数据 - Data	207/104 VDC S1 1,78/0,89 A - 369/184 W - 116 OHM
Booster power board 230 V <sub>AC</sub>	

### 备注 - NOTES

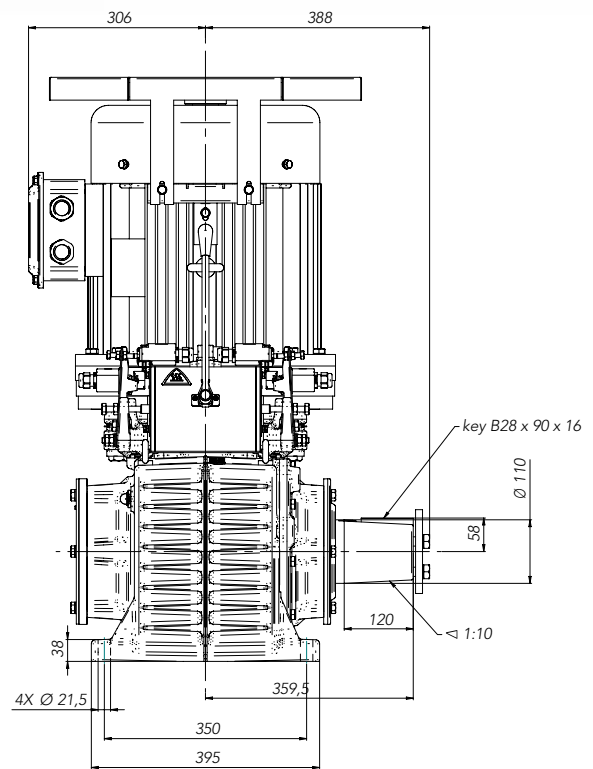
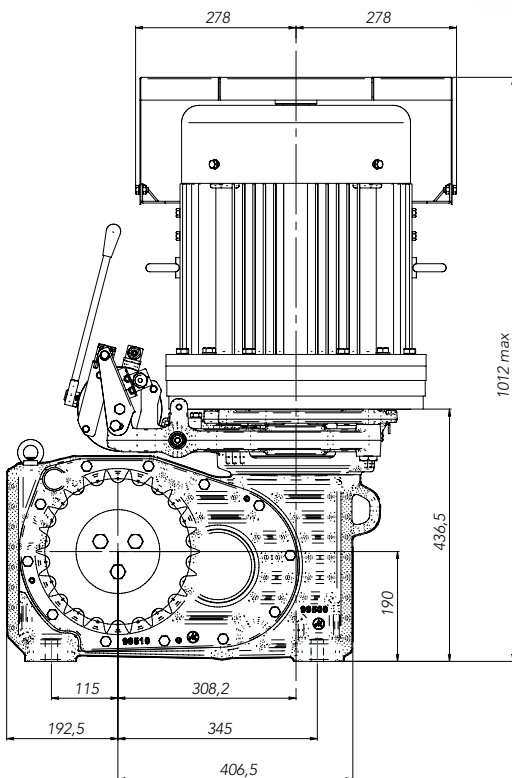
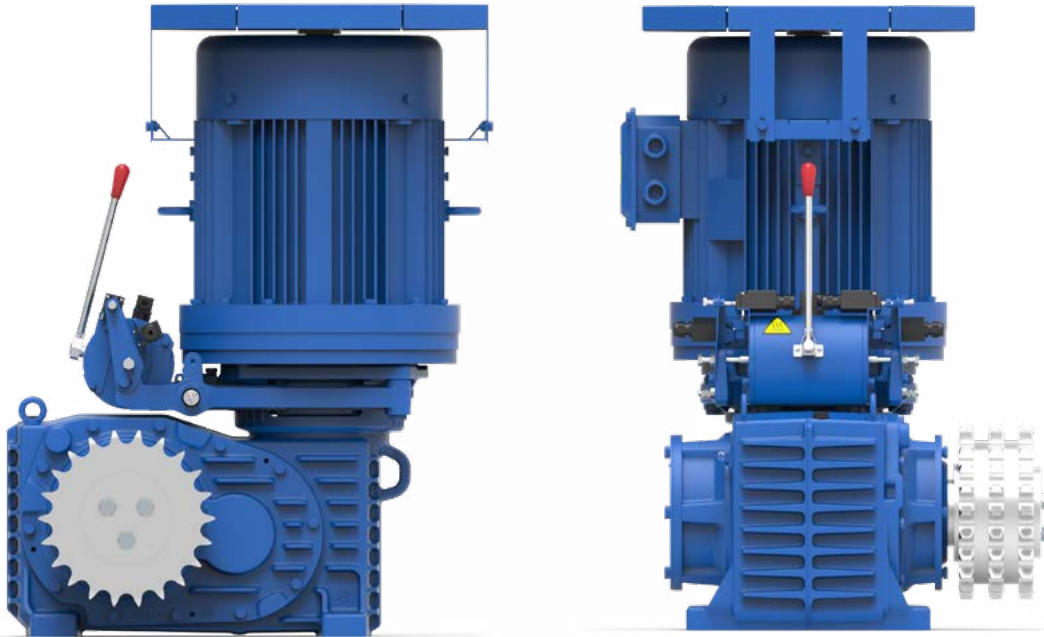
保护装置 - Protection:	IP55
环境温度 - Ambient temperature:	max 40 °C
合成油 - Synthetic oil:	ISO VG460
制动器 - Brake:	2 x 260 Nm

### 选项 - OPTIONAL

旋转传感器 - Rotation Sensor:	PNP or NPN
磨损传感器 - Worn Sensor:	24V DC 1A
制动器微动开关 - Brake Microswitch:	NO - NC AC15 2A / 250V DC13 0.25A / 250V

版本 Version	减速比 Ratio	输出速度 Output speed	最大扭矩 Max torque	功率 Power	效率 <sup>(1)</sup> Efficiency	重量 Weight
		RPM	Nm	kW	满载 - Full load	kg
ME190-26-15-6P	26.01	36.9	3570	15	<b>0.92</b>	540
ME190-19-15-6P	19.04	50.4	2640	15	<b>0.93</b>	
ME190-26-18.5-6P	26.01	36.9	4400	18.5	<b>0.92</b>	600
ME190-19-18.5-6P	19.04	50.4	3250	18.5	<b>0.93</b>	
ME190-26-22-6P	26.01	36.9	5230	22	<b>0.92</b>	610
ME190-19-22-6P	19.04	50.4	3870	22	<b>0.93</b>	

(1) 只有齿轮箱 - only gearbox



技术图纸-右置输出轴  
Technical drawing with right output shaft

在本节中,我们提到的一些使用蒙塔纳锐齿轮箱的自动扶梯案例都是最基础的应用,并不详尽,我们还可以提供其他解决方案,具体情况请与我们的销售部门联系。

In this section we submit some examples of use of the Montanari gearboxes for escalators.

Examples are based on the features of the most common escalator systems, but are not exhaustive of all the possible configurations. We invite you to contact our sales dept. for other solutions.

用途: 商业服务

Commercial service

速度/Speed 0.5 m/s - 倾斜/Inclination 30 度角/deg.			
载重 Load* / hr	A	H	齿轮箱 - Gearbox
p/hr	mm	mm	Vers. / kW
3600	600	<= 4000	M73ES / 5.5
		4500 - 6000	M73ES / 7.5
		6500 - 9000	M93ES / 11
		9500 - 12000	M93ES / 15
4800	800	<= 4000	M73ES / 7.5
		4500 - 6000	M93ES / 11
		6500 - 9000	M93ES / 15
		9500 - 12000	2 x M93ES / 11
6000	1000	<= 3000	M73ES / 7.5
		3500 - 5000	M93ES / 11
		5500 - 7000	M93ES / 15
		7500 - 11000	2 x M93ES / 11
		11500 - 12000	2 x M93ES / 15

\*Load = 载重=人数/小时 = *people per hour*

工作周期为商业型用途

Duty cycle for commercial service

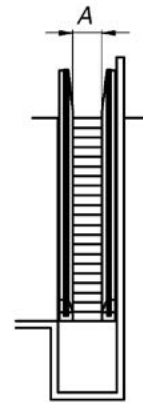
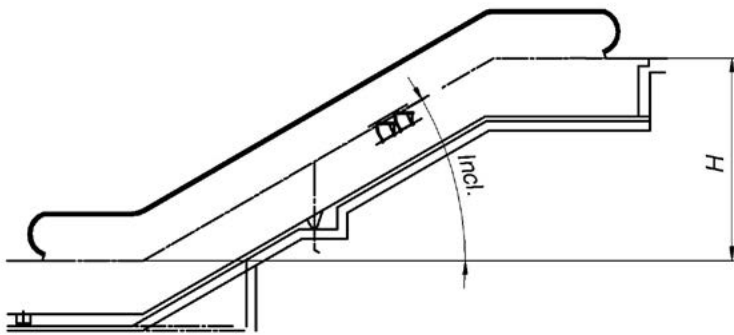
Escalators dedicated to commercial service.

Considering repeated cycles of 3h composed as below:

- 2% of time at 100% Mt\*
- 35% of time at 50% Mt
- 63% of time at 25% Mt

20 h/day - 10 years - 70.000 h

\*Mt = 转矩/torque moment



扶梯图纸

Incl.= 倾斜角度

H = 提升高度(上升)

A = 台阶尺寸

Drawing of an escalator:

Incl.= inclination in degrees

H = difference in height (rise)

A = step dimension

用途：公共服务

Public service

速度/Speed 0.5 m/s - 倾斜/Inclination 30 度角/deg.			
载重 Load* / hr	A	H	齿轮箱 - Gearbox
p/hr	mm	mm	Vers / kw
3600	600	<= 4500 - 7000	ME165 / 7.5
		8000 - 10000	ME165 / 11
		10500 - 12000	ME190 / 15
4800	800	<= 4000	ME165 / 7.5
		4500 - 6500	ME165 / 11
		7000 - 9500	ME190 / 15
		10000 - 11000	ME190 / 18.5 or 2 x ME165 / 11
6000	1000	<= 3000	ME165 / 7.5
		3500 - 5000	ME165 / 11
		5500 - 7000	ME190 / 15
		7500 - 8500	ME190 / 18.5 or 2 x ME165 / 11
		9000 - 10000	ME190 / 22 or 2 x ME165 / 11
		10500 - 12000	2 x ME190 / 15

\*Load = 载重=人数/小时 = people per hour

工作周期为公交型用途

Duty cycle for public service

基于EN115-1标准:

——公共交通型自动扶梯。

3小时周期工作效率如下:

Based on the guidelines of the EN115-1 regulation:

- escalators dedicated to public service.

Considering repeated cycles of 3h composed as below:

- 17% of time at 100% Mt\*
- 50% of time at 50% Mt
- 33% of time at 25% Mt

20 h/day - 20 years - 146.000 h

\*Mt = 转矩/torque moment



*Montanari*  
DRIVE TECHNOLOGY

# 零部件 COMPONENTS





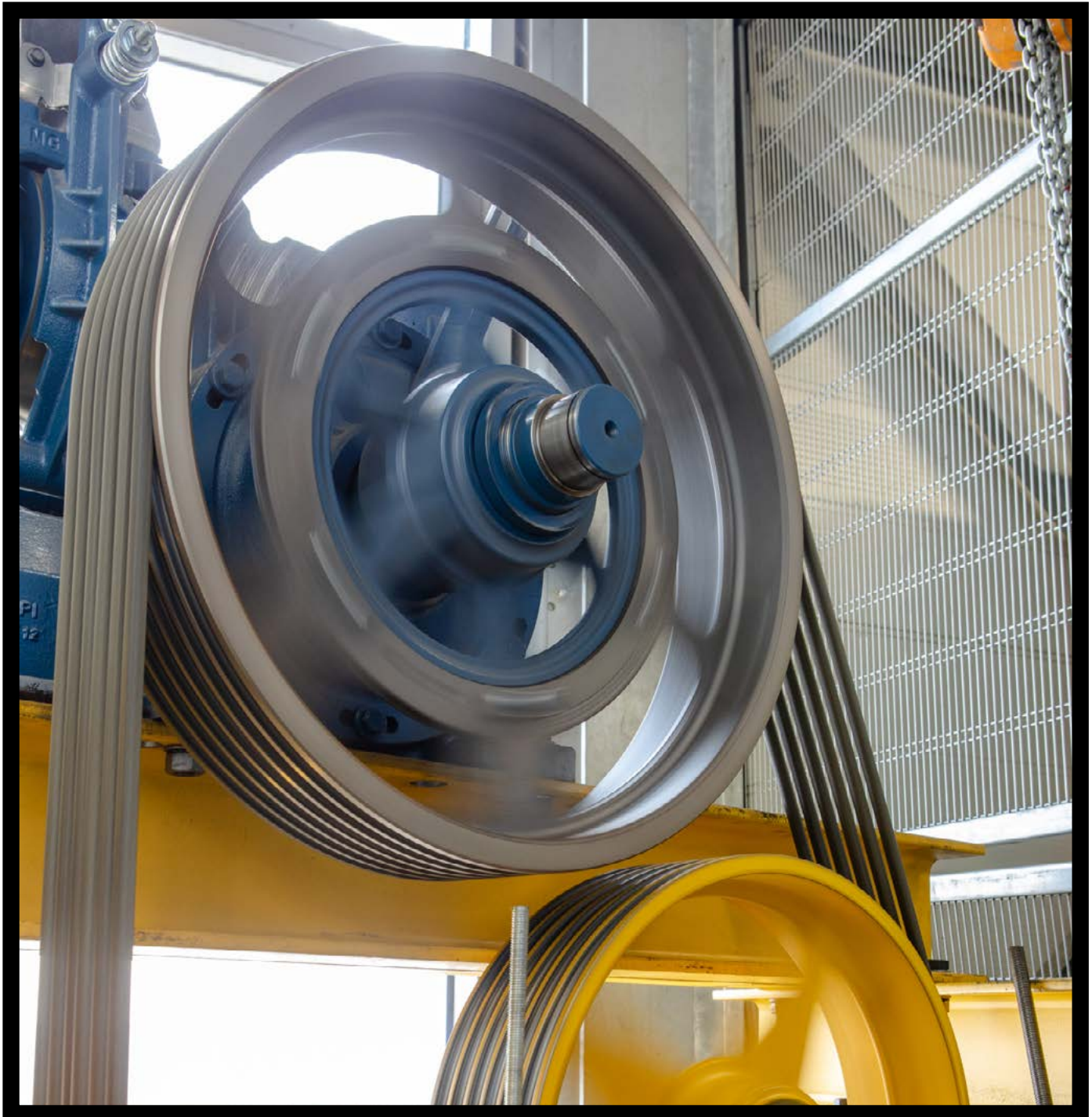
实现最佳性能，  
追求完美细节。

**NEVER NEGLECT  
THE DETAILS  
TO GET GREAT  
RESULT.**

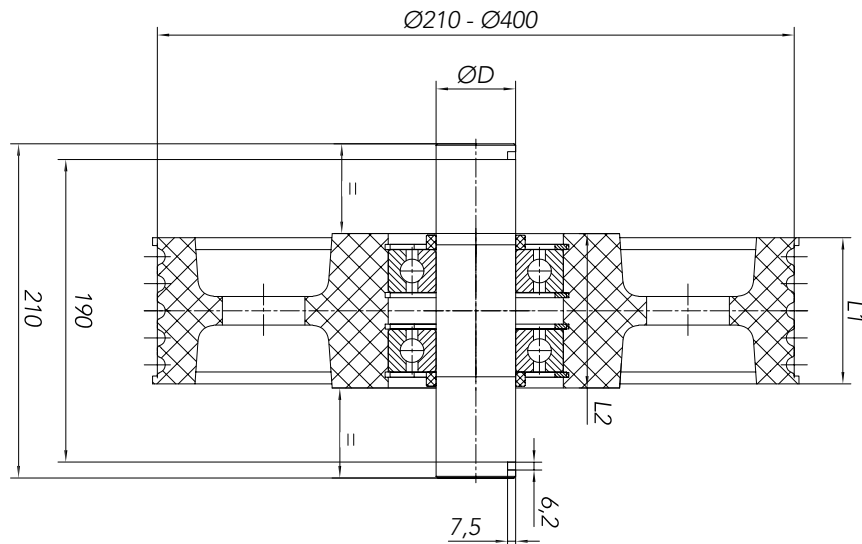


*Montanari*  
DRIVE TECHNOLOGY

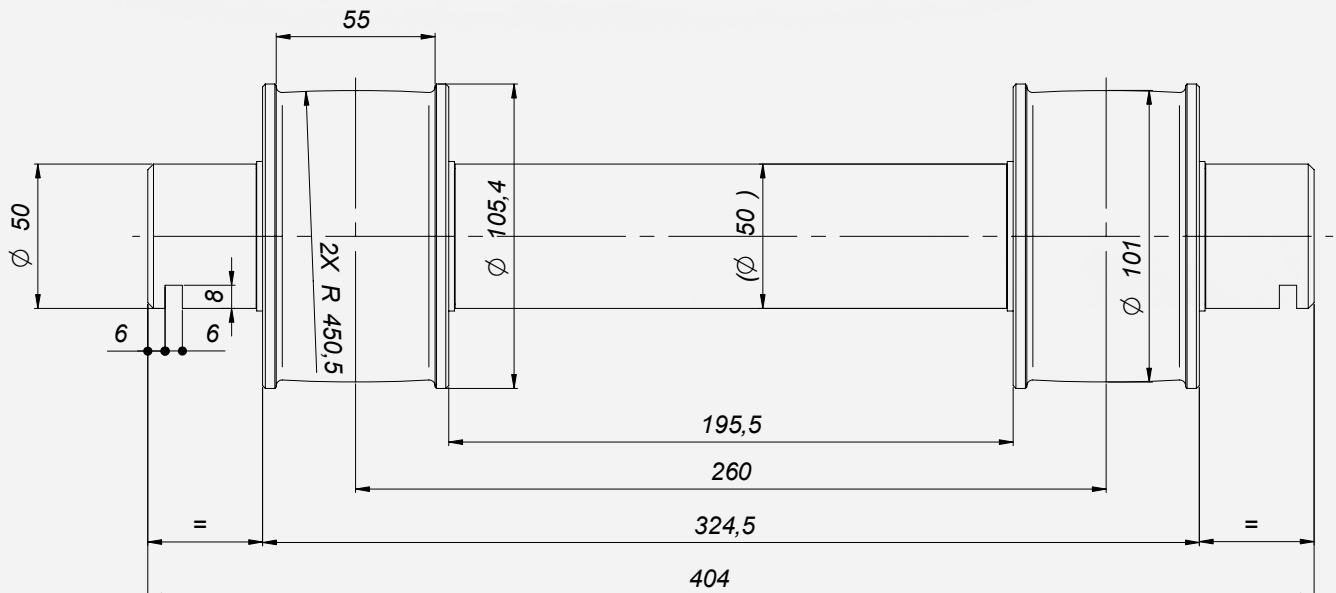
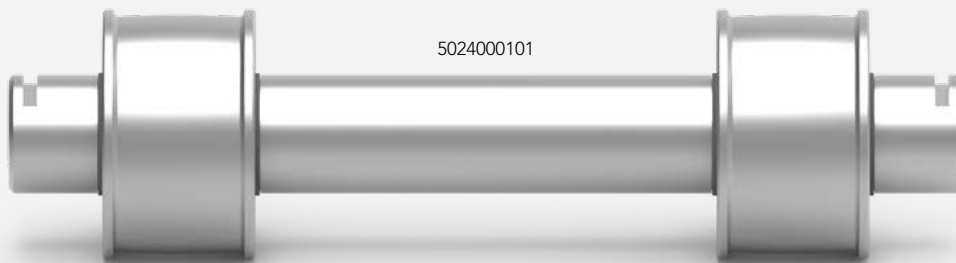
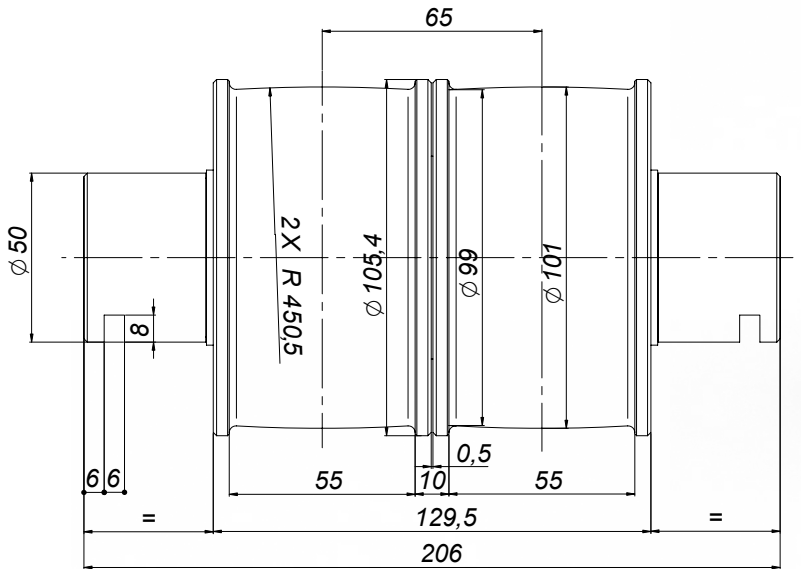
## 导向轮 - **DIVERTING SHEAVES**



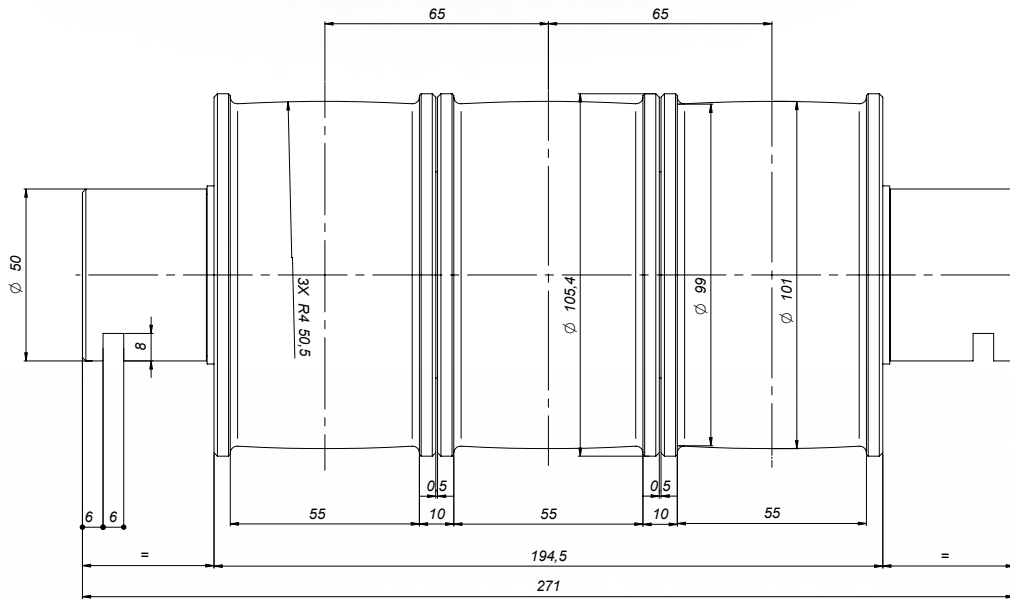
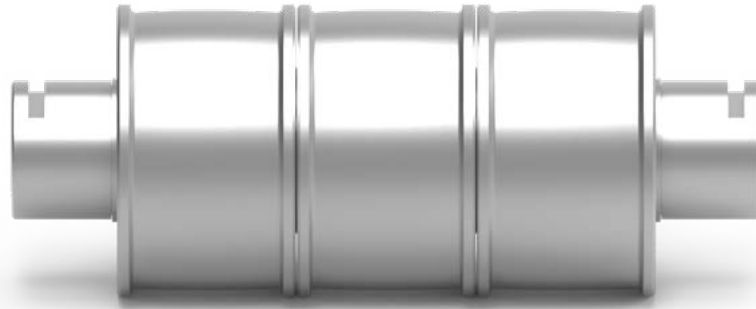
代码 CODE	导向轮直径 Pulley Diameter	钢丝绳数量 N. of Ropes	钢丝绳直径 Rope Diameter	槽距 Pitch	最大载重 Max Load
	mm	mm	mm	mm	kg
NPS02100001	210	5	6,5	12	900
NPS02100002		6			
NPS02100003		7			
NPS02100004		8			
NPS02100005		3	8		
NPS02100006		4			
NPS02100007		5			
NPS02100008		8	6,5		
NPS02400001	240	4	6,5	12	900
NPS02400002		5			
NPS02400003		6			
NPS02400004		7			
NPS02400005		8			
NPS02400006		9			
NPS02400007		3	8		
NPS02400008		4			
NPS02400009		5			
NPS02400010		6			
NPS02400011		7			
NPS02400012		8			
NPS02400013	8	6,5	9,5		
NPS03200001	320	3	8	12	2100
NPS03200002		4			
NPS03200003		5			
NPS03200004		6			
NPS03200005		7			
NPS03200006		8			
NPS03200007		9			
NPS03200008		3		17	2100
NPS03200009		4			
NPS03200010		5			
NPS03200011		6			
NPS03200012		7			
NPS03200013		8			
NPS03200014		9			
NPS03200015		10			
NPS04000001	400	3	10		14
NPS04000002		4			
NPS04000003		5			
NPS04000004		6			
NPS04000005		7			
NPS04000006		3		17	2100
NPS04000007		4			
NPS04000008		5			
NPS04000009		6			3750



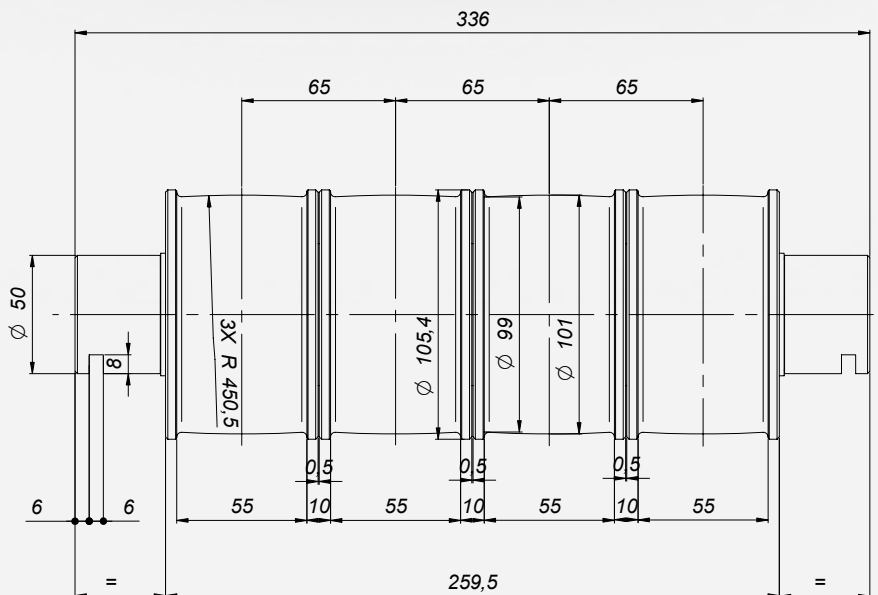
代码 CODE	描述 Description	钢带直径 Belt Diameter	钢带数量 N° of Belts	钢带宽度 Belt Width	槽距 Pitch	最大载重 Max Load
		mm	mm	mm	mm	kg
522000005	钢带曳引机机导向轮 BELT DIVERTING PULLEY	101	2	30	65	1500
5024000101			2		260	
5024000005			3		65	
5024000008			4		65	



5024000005

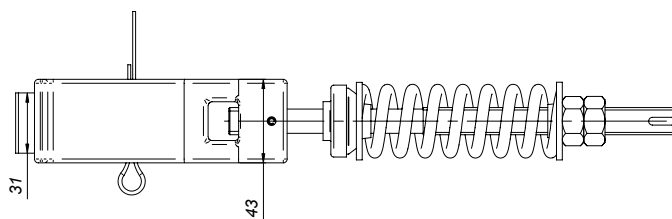
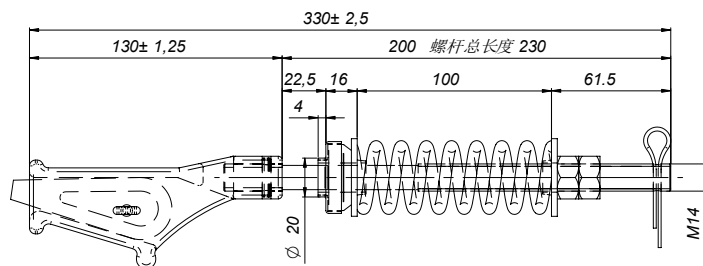


5024000008

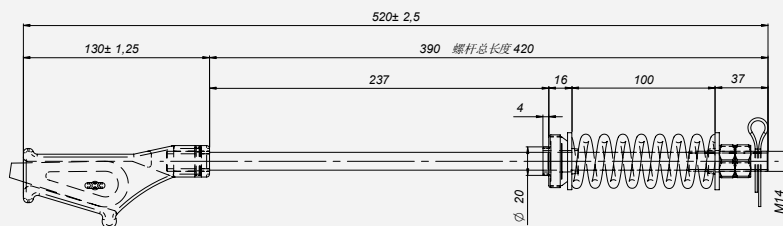


代码 CODE	型号 Type	钢带宽度 Belt Width	破断力 Breaking Force
		mm	kN
5249054761	SLBJ-130/330	30	52
5249054794	SLBJ-130/520	30	52

5249054761

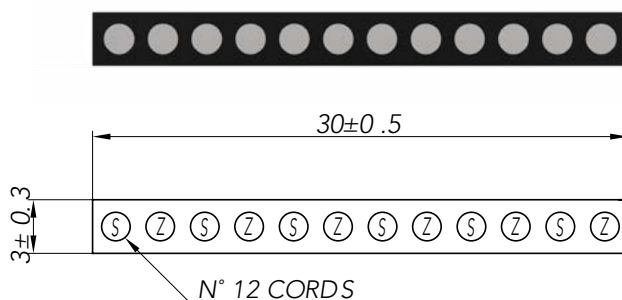


5249054794



## 钢带 - STEEL BELT

代码 CODE	描述 Description	宽度 Width	厚度 Thickness	断裂负荷 Breaking Load	摩擦系数 Friction Coefficient	延伸率 Elongation	附着力 Adhesion	钢芯 Steel Core	10000000次使用循环后的断裂负荷 After 10000000 Cycles Fatigue Breaking Load	最小弯曲直径 Minimum Bending Diameter
		mm	mm	kN			N	mm		mm
5249045997	Steel Belt 30F3 (45KN) SIT	30±0.5	3±0.3	≥45	≤0.5	2%	≥900	Ø 1.7 (6Z+6S)	≥80%	Ø 85





REV. 02\_04/2026

本产品册中包含的图片和数据可能会在不提前通知的情况下进行修改。  
Images and data may be changed without prior notice.

本产品册由蒙塔纳锐营销团队与技术和商业部门合作编制。

THIS CATALOGUE WAS MADE WITH LOVE BY MONTANARI MARKETING TEAM IN COOPERATION WITH TECHNICAL & SALES DEPT.



**MONTANARI GROUP - CHINA HEADQUARTERS**  
**MONTANARI DRIVE TECHNOLOGY (ZHEJIANG) CO. LTD**

蒙塔纳锐驱动技术（浙江）有限公司  
浙江省嘉兴市平湖市经济技术开发区新明路999号9号厂房  
No.9 factory, No.999 Xinming Road, Pinghu Economic and  
Technological Development Zone, Jiaxing, Zhejiang Province  
电话 T. +0086 0573-85090886  
传真 F. +0086 0573-85098183  
[www.montanari.cn](http://www.montanari.cn) - [info@montanari.cn](mailto:info@montanari.cn)